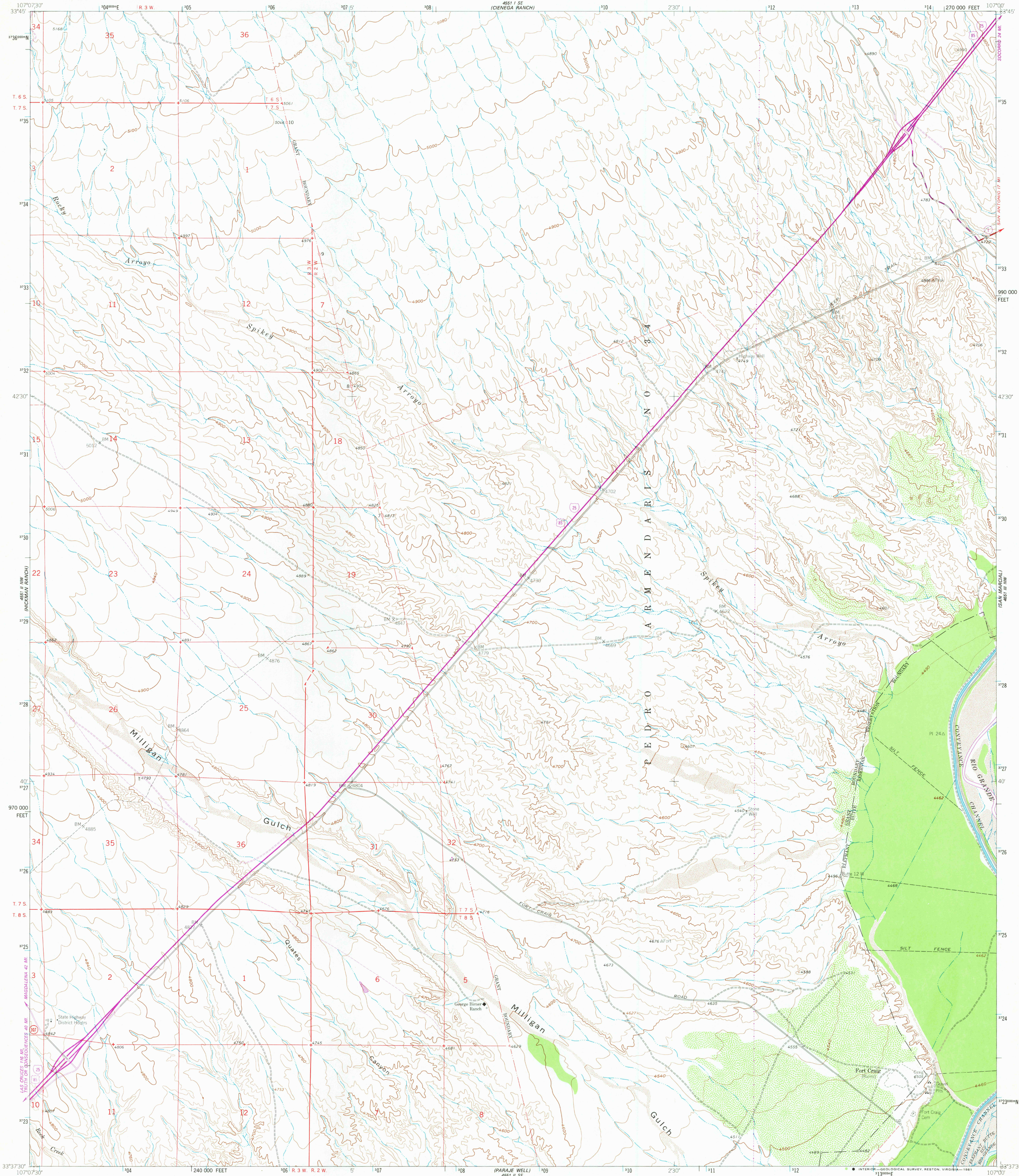


UNITED STATES  
DEPARTMENT OF THE INTERIOR  
GEOLOGICAL SURVEY

FORT CRAIG QUADRANGLE  
NEW MEXICO-SOCORRO CO.  
7.5 MINUTE SERIES (TOPOGRAPHIC)



Mapped, edited, and published by the Geological Survey

Control by USGS and NOS/NOAA

Topography by photogrammetric methods from aerial  
photographs taken 1958. Field checked 1961

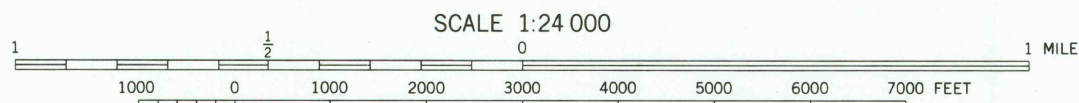
Polyconic projection. 1927 North American datum  
10,000-foot grid based on New Mexico coordinate system, central zone  
1000-meter Universal Transverse Mercator grid ticks,  
zone 13, shown in blue

Fine red dashed lines indicate selected fence lines

Area of Elephant Butte Reservoir covered by dashed light-blue pattern  
is subject to controlled inundation. Water level at date of photography  
4416 feet. Average pool elevation 4359 feet. Spillway elevation 4450 feet

To place on the predicted North American Datum 1983  
move the projection lines 4 meters south and  
53 meters east as shown by dashed corner ticks

There may be private inholdings within the boundaries  
of the National or State reservations shown on this map



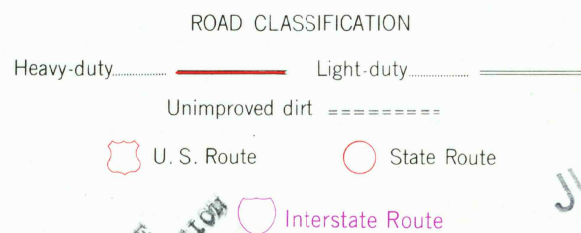
CONTOUR INTERVAL 20 FEET  
DOTTED LINES REPRESENT 10-FOOT CONTOURS  
NATIONAL GEODETIC VERTICAL DATUM OF 1929

THIS MAP COMPLIES WITH NATIONAL MAP ACCURACY STANDARDS  
FOR SALE BY U.S. GEOLOGICAL SURVEY, DENVER, COLORADO 80225 OR RESTON, VIRGINIA 22092  
A FOLDER DESCRIBING TOPOGRAPHIC MAPS AND SYMBOLS IS AVAILABLE ON REQUEST

Revisions shown in purple compiled from aerial photographs  
taken 1978 and other source data. This information not  
field checked. Map edited 1980



QUADRANGLE LOCATION



USGS  
HISTORICAL FILES  
NATIONAL MAPS DIVISION

FORT CRAIG, N. MEX.  
N3337.5 - W10700.775

1961  
PHOTOREVISED 1980  
DMA 4551 II NE-SERIES V881

JUN 3 1981

2050