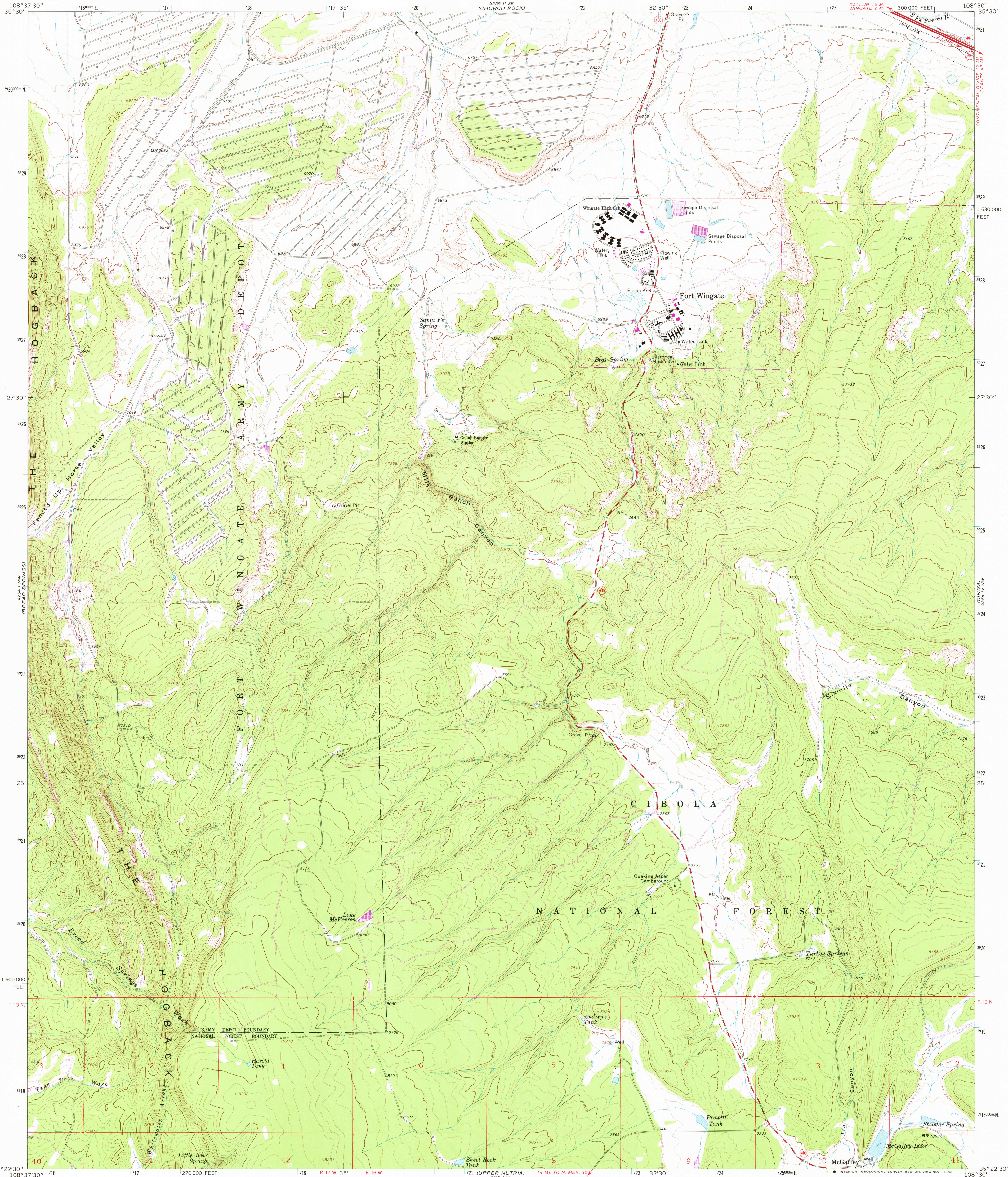


UNITED STATES  
DEPARTMENT OF THE INTERIOR  
GEOLOGICAL SURVEY

FORT WINGATE QUADRANGLE  
NEW MEXICO—MCKINLEY CO.  
7.5 MINUTE SERIES (TOPOGRAPHIC)



Mapped, edited, and published by the Geological Survey

Control by USGS and NOS/NOAA

Topography by photogrammetric methods from aerial

photographs taken 1962. Field checked 1963

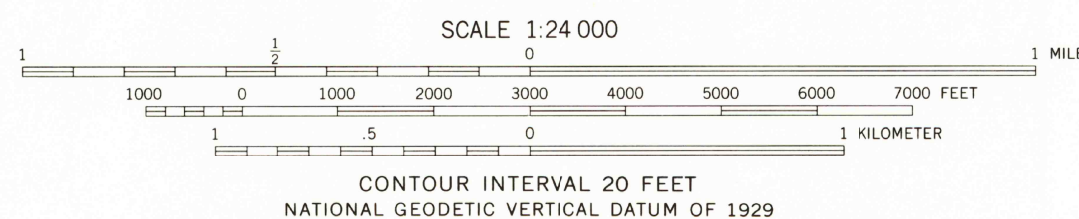
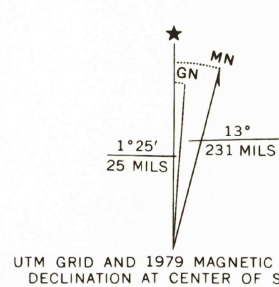
Polyconic projection. 1927 North American datum  
10,000-foot grid based on New Mexico coordinate system, west zone  
1000-meter Universal Transverse Mercator grid ticks,  
zone 12, shown in blue

Fine red dashed lines indicate selected fence lines

Where omitted, land lines have not been established

There may be private inholdings within the boundaries of  
the National or State reservations shown on this map

Revisions shown in purple compiled from aerial photographs  
taken 1978 and other source data. This information not  
field checked. Map edited 1979



THIS MAP COMPLIES WITH NATIONAL MAP ACCURACY STANDARDS  
FOR SALE BY U.S. GEOLOGICAL SURVEY, DENVER, COLORADO 80225, OR RESTON, VIRGINIA 22092  
A FOLDER DESCRIBING TOPOGRAPHIC MAPS AND SYMBOLS IS AVAILABLE ON REQUEST



USGS  
Historical File  
Topographic Division

FORT WINGATE, N. MEX.  
N3522.5—W10830/7.5

1963  
PHOTOREVISED 1979  
DMA 4254 I NE—SERIES V881

MAY - 1 1980