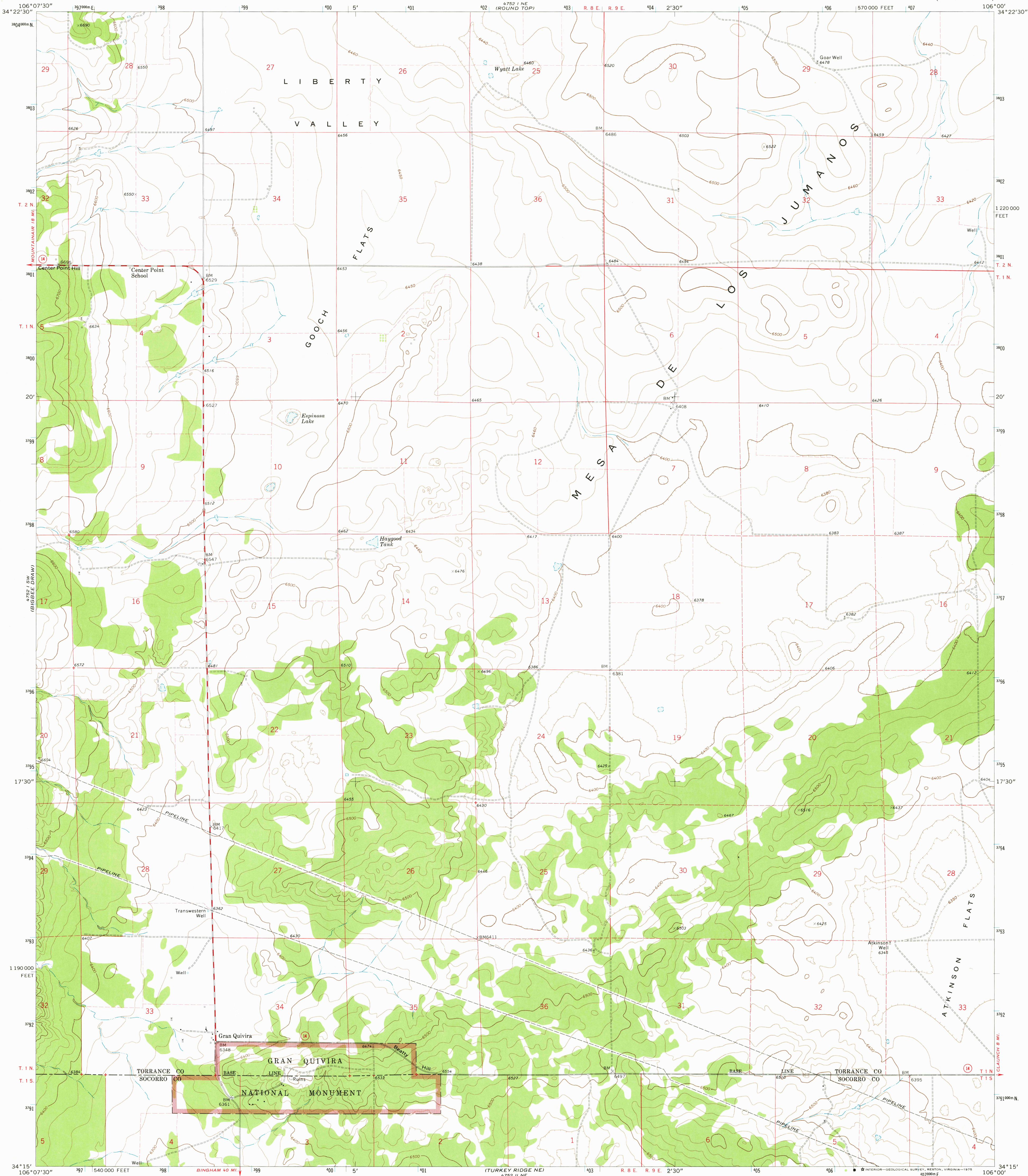


4752 II NW
(MESA DRAW)

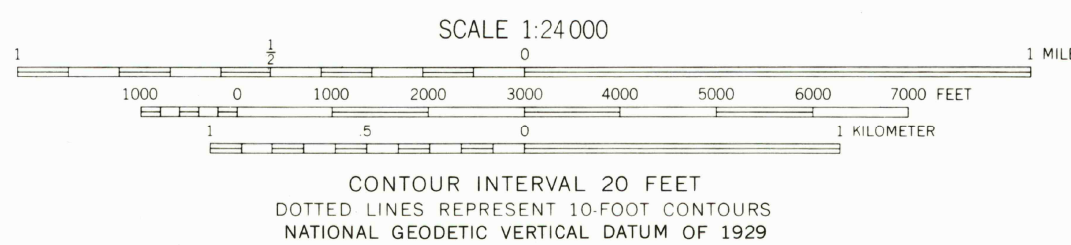
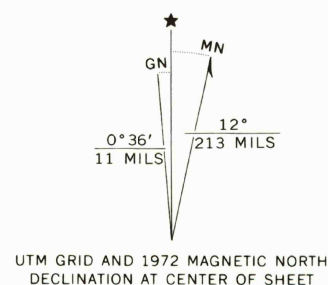
UNITED STATES
DEPARTMENT OF THE INTERIOR
GEOLOGICAL SURVEY

GRAN QUIVIRA QUADRANGLE
NEW MEXICO—SOCORRO CO.
7.5 MINUTE SERIES (TOPOGRAPHIC)



(TURKEY RIDGE)
4752 II NW

Mapped, edited, and published by the Geological Survey
Control by USGS, USC&GS and Defense Mapping Agency
Topography by photogrammetric methods from aerial
photographs taken 1971. Field checked 1972
Projection and 10,000-foot grid ticks: New Mexico
coordinate system, central zone (transverse Mercator)
1000-meter Universal Transverse Mercator grid ticks,
zone 13, shown in blue. 1927 North American datum
Fine red dashed lines indicate selected fence lines



ROAD CLASSIFICATION
Primary highway, hard surface
Secondary highway, hard surface
Light-duty road, hard or improved surface
Unimproved road
Interstate Route
U. S. Route
State Route

SEP 5 1975

THIS MAP COMPLIES WITH NATIONAL MAP ACCURACY STANDARDS
FOR SALE BY U.S. GEOLOGICAL SURVEY, DENVER, COLORADO 80225, OR RESTON VIRGINIA 22092
A FOLDER DESCRIBING TOPOGRAPHIC MAPS AND SYMBOLS IS AVAILABLE ON REQUEST

GRAN QUIVIRA, N. MEX.
N3415-W10600/7.5

1972

AMS 4752 I SE—SERIES V881

USGS
HISTORICAL FILE
TOPOGRAPHIC DIVISION

2650
150
50