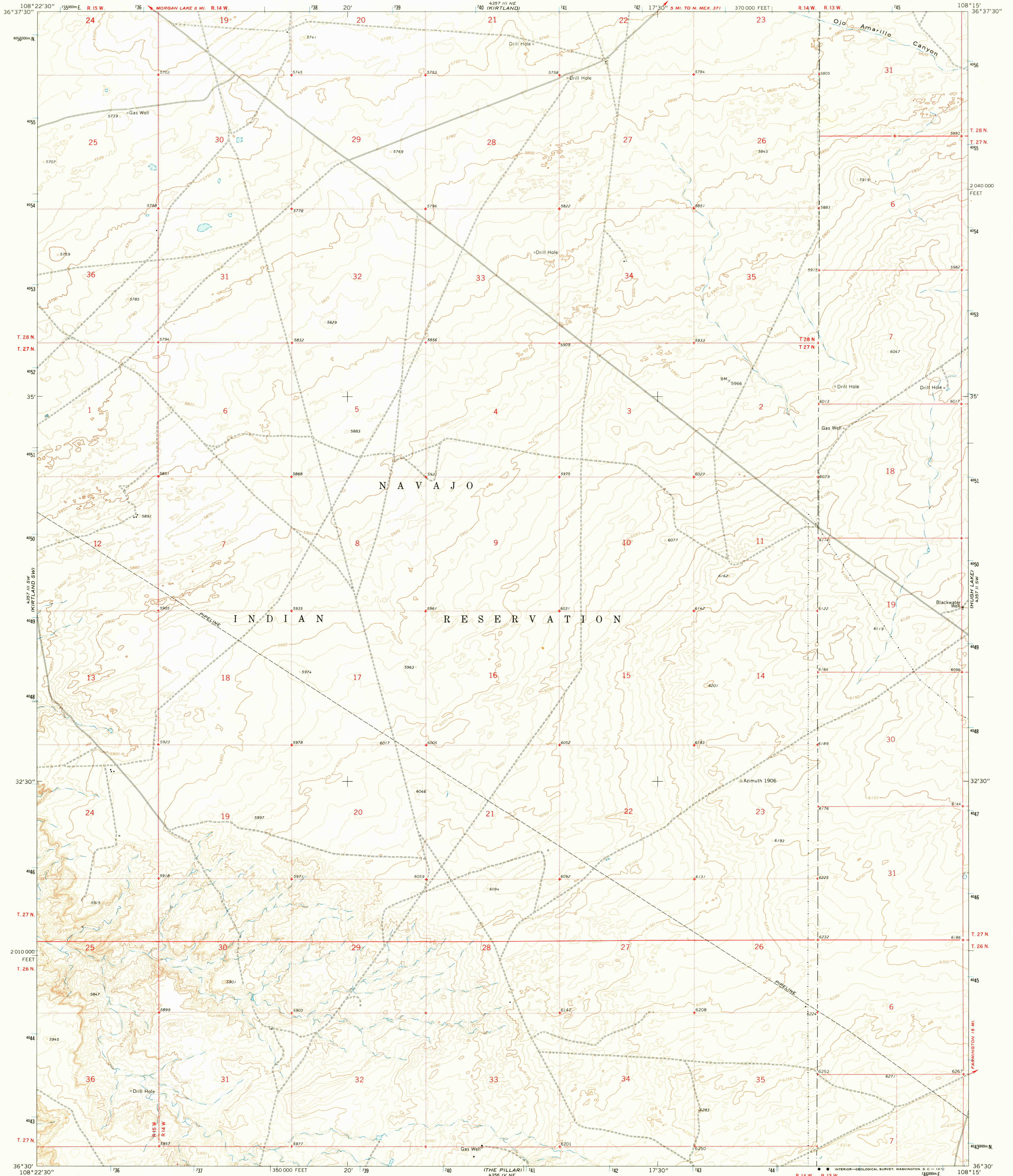
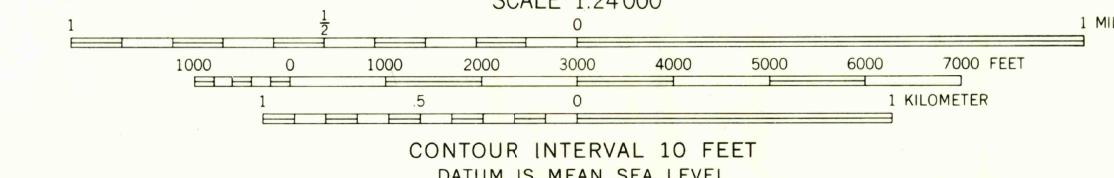
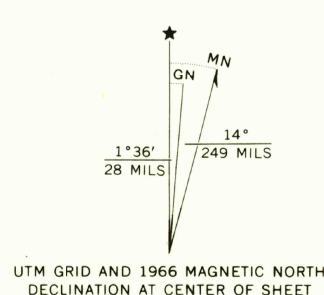


UNITED STATES
DEPARTMENT OF THE INTERIOR
GEOLOGICAL SURVEY

KIRTLAND SE QUADRANGLE
NEW MEXICO—SAN JUAN CO.
7.5 MINUTE SERIES (TOPOGRAPHIC)



Mapped, edited, and published by the Geological Survey
Control by USGS, USCGS, and U. S. Bureau of Reclamation
Topography by photogrammetric methods from aerial
photographs taken 1964 and by planetable surveys of the
Bureau of Reclamation 1965. Field checked by USGS 1966
Polyconic projection. 1927 North American datum
10,000-foot grid based on New Mexico coordinate system,
west zone
1000-meter Universal Transverse Mercator grid ticks,
zone 12, shown in blue
Fine red dashed lines indicate selected fence lines
Where omitted, land lines have not been established
Dotted land lines established by Bureau of
Indian Affairs survey



USGS
Historical File
Topographic Division



U.S.G.S.
FILE 80101
TOPOGRAPHIC DIVISION

KIRTLAND SE, N. MEX.
N3630—W10815/7.5
1966
AMS 4357 III SE—SERIES V881

MAY 1 1970