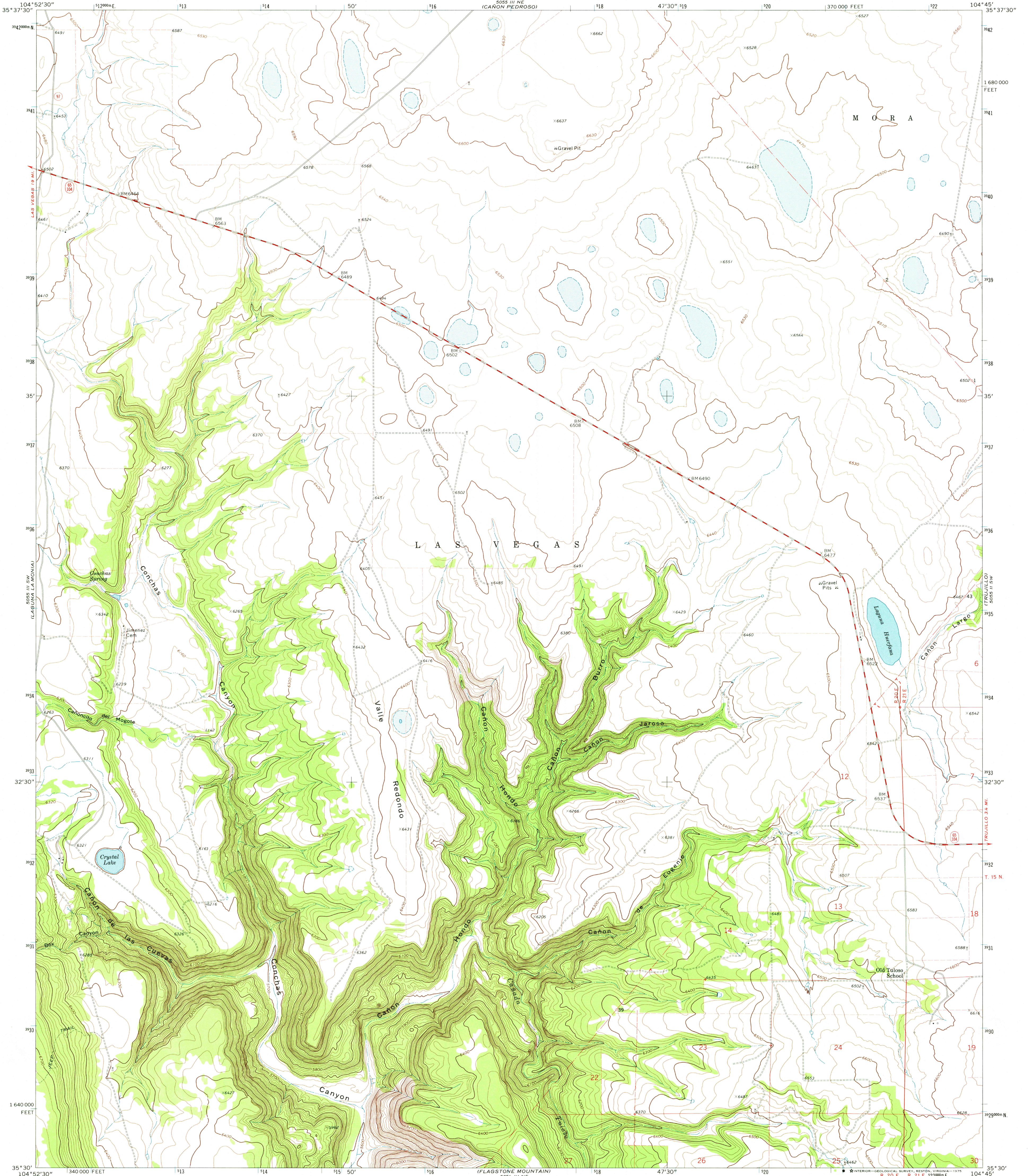


UNITED STATES
DEPARTMENT OF THE INTERIOR
GEOLOGICAL SURVEY

LAGUNA HUERFANA QUADRANGLE
NEW MEXICO—SAN MIGUEL CO.
7.5 MINUTE SERIES (TOPOGRAPHIC)



Mapped, edited, and published by the Geological Survey

Control by USGS and USC&GS

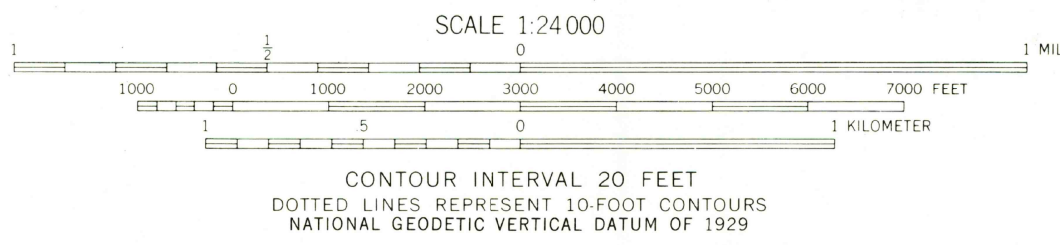
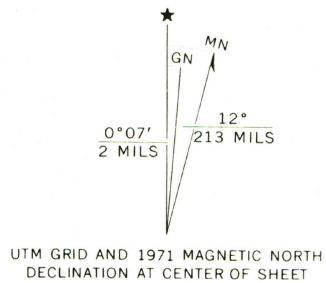
Topography by photogrammetric methods from aerial
photographs taken 1970. Field checked 1971

Projection and 10,000-foot grid ticks: New Mexico
coordinate system, east zone (transverse Mercator)

1000-meter Universal Transverse Mercator grid ticks,
zone 13, shown in blue. 1927 North American datum

Fine red dashed lines indicate selected fence lines

Certain land lines are omitted because of insufficient data



ROAD CLASSIFICATION
Primary highway, hard surface
Secondary highway, hard surface
Unimproved road
Interstate Route
U.S. Route
State Route

LAGUNA HUERFANA, N. MEX.
N3530—W10445/7.5

1971

AMS 5055 III SE—SERIES V981

THIS MAP COMPLIES WITH NATIONAL MAP ACCURACY STANDARDS
FOR SALE BY U.S. GEOLOGICAL SURVEY, DENVER, COLORADO 80225, OR RESTON, VIRGINIA 22092
A FOLDER DESCRIBING TOPOGRAPHIC MAPS AND SYMBOLS IS AVAILABLE ON REQUEST

MAR 12 1975

3200