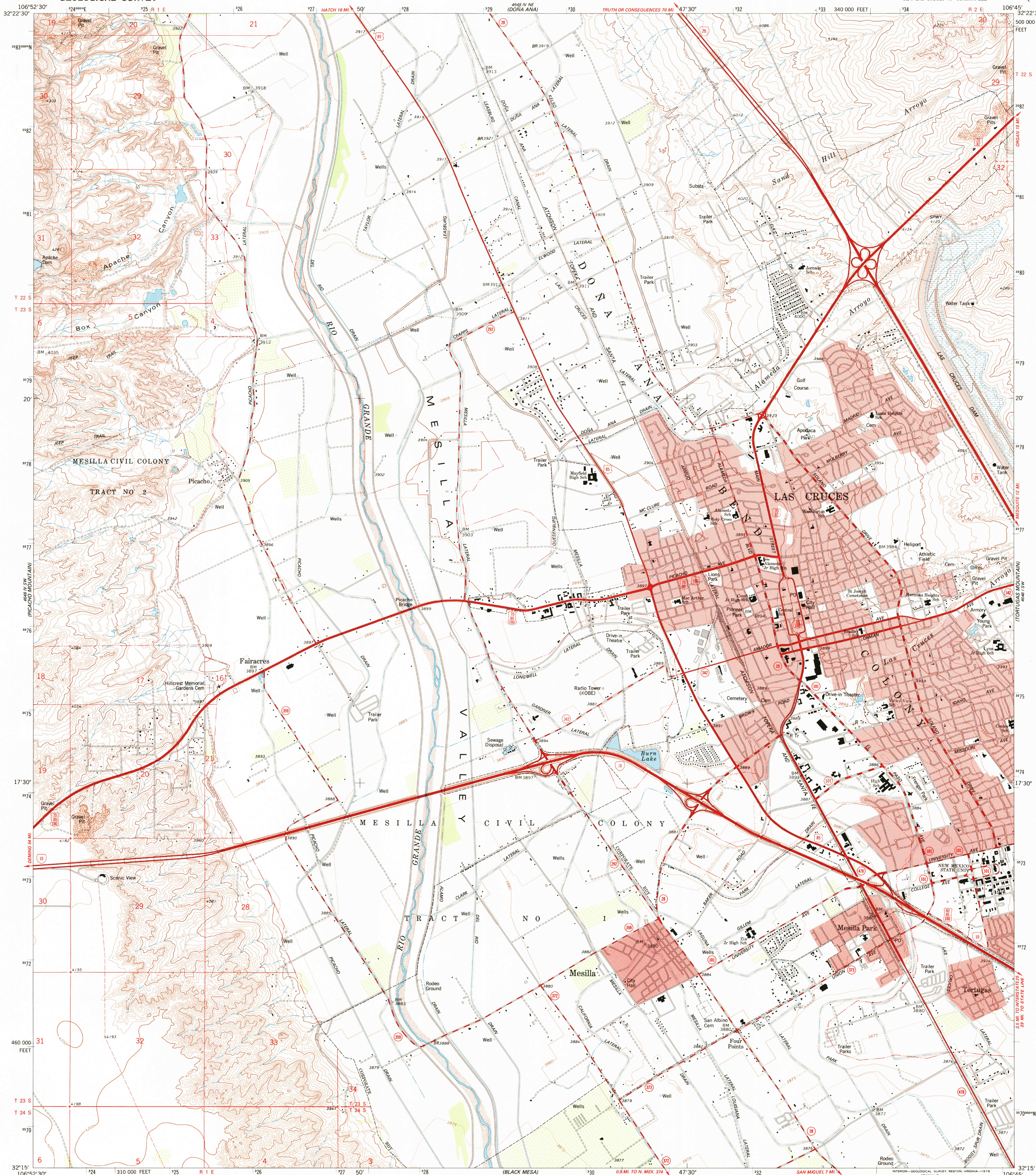


4648 IV NW
(LEASBURG)

UNITED STATES
DEPARTMENT OF THE INTERIOR
GEOLOGICAL SURVEY

LAS CRUCES QUADRANGLE
NEW MEXICO—DOÑA ANA CO.
7.5 MINUTE SERIES (TOPOGRAPHIC)
SE/4 LAS CRUCES 15' QUADRANGLE

4648 IV NW
(DOÑA ANA)



Mapped, edited, and published by the Geological Survey

Control by USGS and NOS/NOAA

Topography by photogrammetric methods from aerial photographs

taken 1972. Field checked 1974. Map edited 1978

Projection and 10,000-foot grid ticks: New Mexico

coordinate system, central zone (transverse Mercator)

1000-meter Universal Transverse Mercator grid ticks,

zone 13, shown in blue. 1927 North American datum

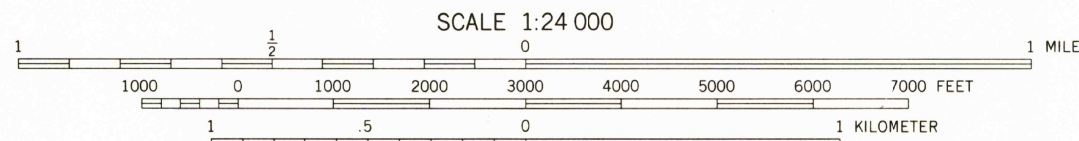
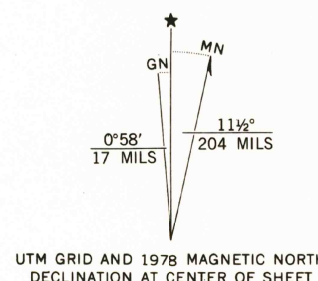
Red tint indicates area in which only landmark buildings are shown

Fine red dashed lines indicate selected fence lines

Where omitted, land lines have not been established

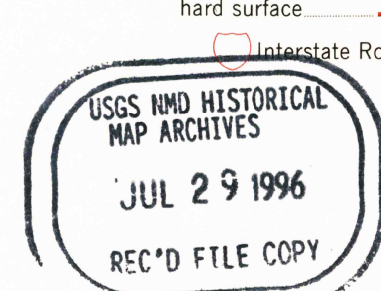
Areas covered by dashed light-blue pattern are subject

to controlled inundation



CONTOUR INTERVAL 10 FEET
DOTTED LINES REPRESENT 5-FOOT CONTOURS
NATIONAL GEODETIC VERTICAL DATUM OF 1929

THIS MAP COMPLIES WITH NATIONAL MAP ACCURACY STANDARDS
FOR SALE BY U.S. GEOLOGICAL SURVEY, DENVER, COLORADO 80225, OR RESTON, VIRGINIA 22092
A FOLDER DESCRIBING TOPOGRAPHIC MAPS AND SYMBOLS IS AVAILABLE ON REQUEST



LAS CRUCES, N. MEX.
SE/4 LAS CRUCES 15' QUADRANGLE
N3215—W10645/7.5
1978
AMS 4648 IV SE—SERIES V981

ISBN 0-607-37744-5
917806071377446