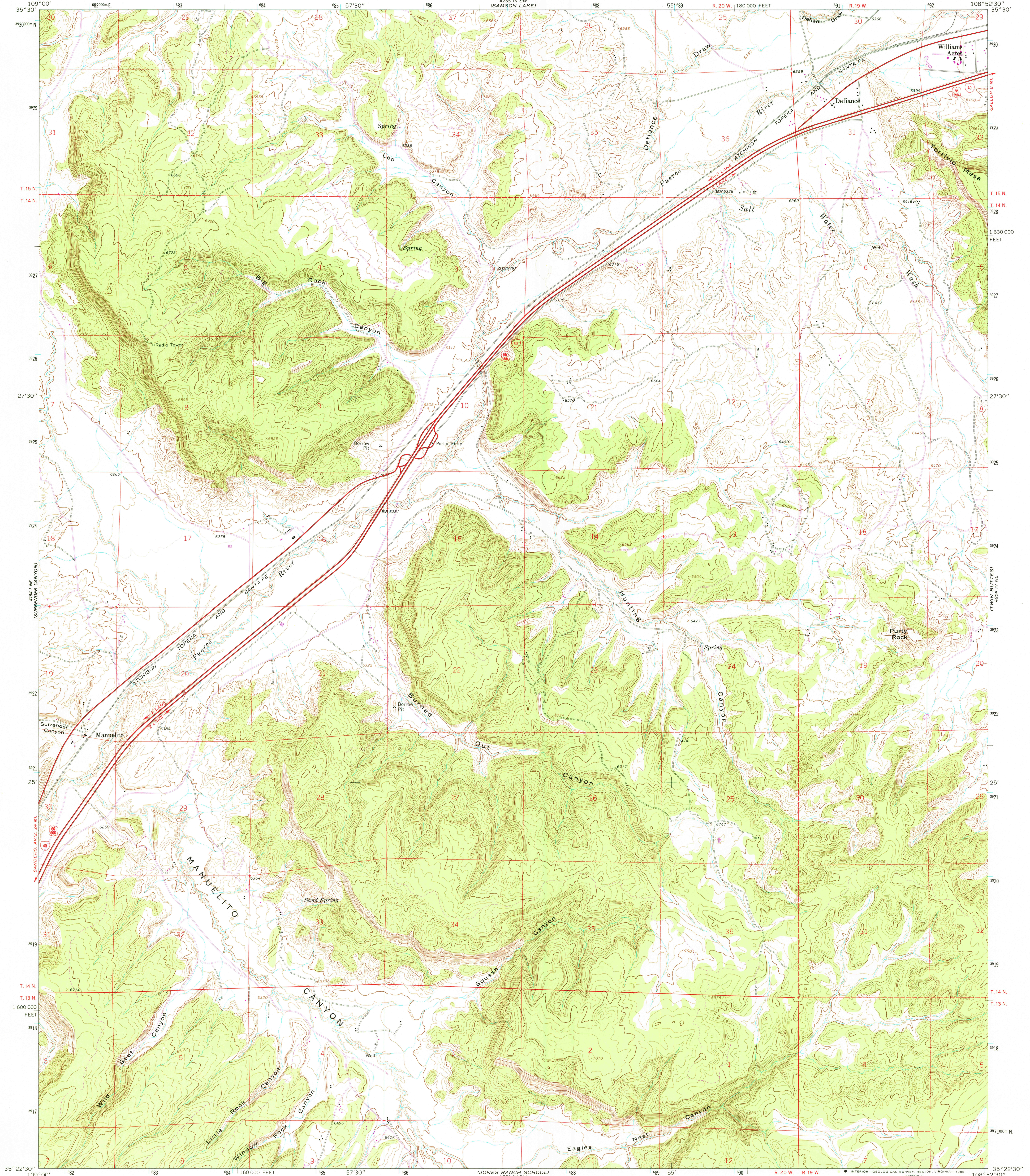


UNITED STATES
DEPARTMENT OF THE INTERIOR
GEOLOGICAL SURVEY

MANUELITO QUADRANGLE
NEW MEXICO—MC KINLEY CO.
7.5 MINUTE SERIES (TOPOGRAPHIC)



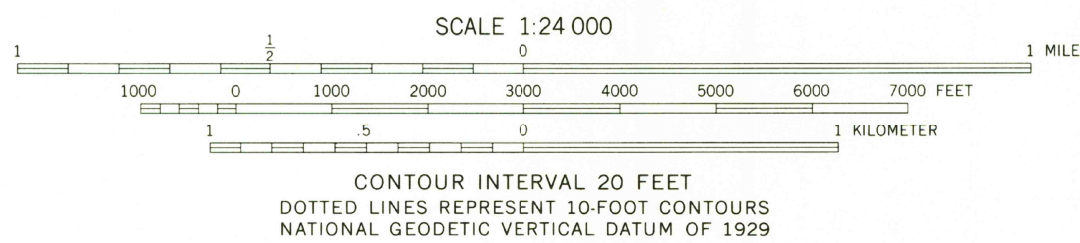
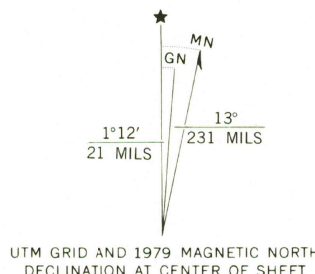
Mapped, edited, and published by the Geological Survey

Control by USGS and NOS/NOAA

Topography by photogrammetric methods from aerial photographs taken 1962. Field checked 1963

Polyconic projection. 1927 North American datum
10,000-foot grid based on New Mexico coordinate system, west zone
1000-meter Universal Transverse Mercator grid ticks, zone 12, shown in blue

Revisions shown in purple compiled from aerial photographs taken 1978 and other source data. This information not field checked. Map edited 1979



THIS MAP COMPLIES WITH NATIONAL MAP ACCURACY STANDARDS
FOR SALE BY U. S. GEOLOGICAL SURVEY, DENVER, COLORADO 80225, OR RESTON, VIRGINIA 22092
A FOLDER DESCRIBING TOPOGRAPHIC MAPS AND SYMBOLS IS AVAILABLE ON REQUEST



QUADRANGLE LOCATION

ROAD CLASSIFICATION
Heavy-duty ——— Light-duty ———
Unimproved dirt ———
Interstate Route U. S. Route

USGS
Historical File
Topographic Division

MANUELITO, N. MEX.
N3522.5—W10852.5/7.5
1963
PHOTOREVISED 1979
DMA 4254 IV NW—SERIES V681

MAY - 5 1980

1725