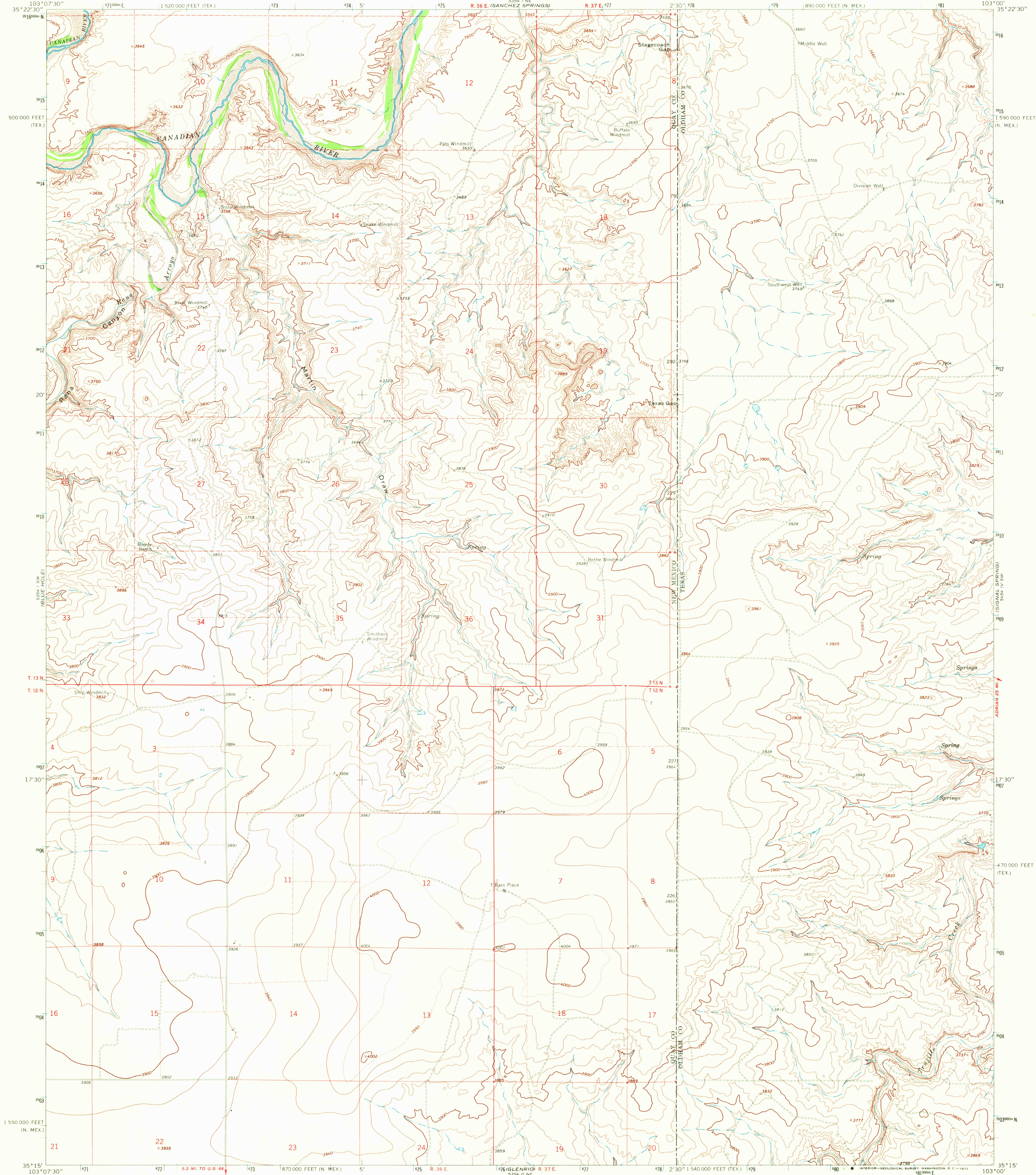
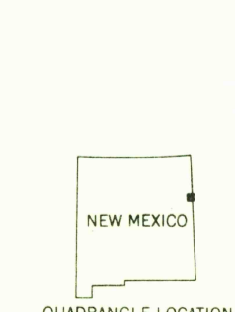
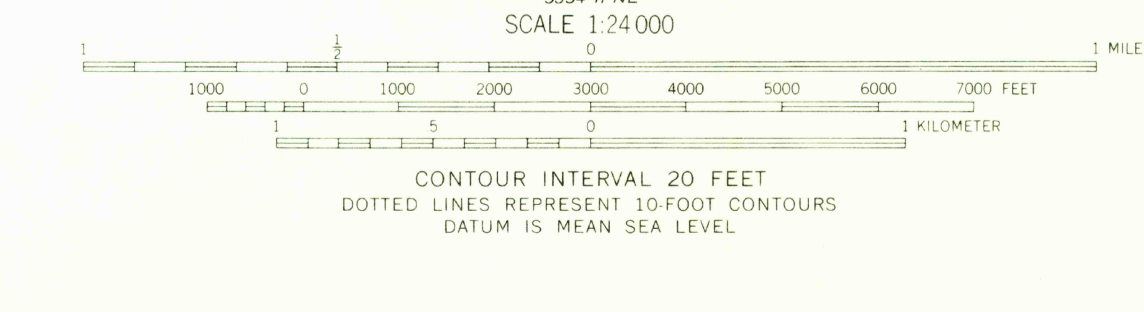
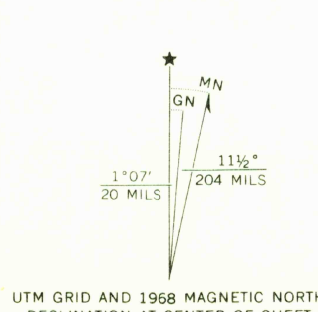


UNITED STATES
DEPARTMENT OF THE INTERIOR
GEOLOGICAL SURVEY

MARTIN DRAW QUADRANGLE
NEW MEXICO—TEXAS
7.5 MINUTE SERIES (TOPOGRAPHIC)



Mapped, edited, and published by the Geological Survey
Control by USGS and USC&GS
Topography by photogrammetric methods from aerial
photographs taken 1967. Field checked 1968
Polyconic projection. 1927 North American datum
10,000-foot grids based on New Mexico coordinate system,
east zone and Texas coordinate system, north zone
1000-meter Universal Transverse Mercator grid ticks,
zone 13, shown in blue
Fine red dashed lines indicate selected fence lines



ROAD CLASSIFICATION
Light duty road, all weather, improved surface
Unimproved road, fair or dry weather
MARTIN DRAW, N. MEX.—TEX. JAN 20 1972
N3515—W10300/7.5
1968
AMS 5354 I SE—SERIES V881
USGS HISTORICAL FILE TOPOGRAPHIC DIVISION

THIS MAP COMPLIES WITH NATIONAL MAP ACCURACY STANDARDS
FOR SALE BY U. S. GEOLOGICAL SURVEY, DENVER, COLORADO 80225, OR WASHINGTON, D. C. 20242
A FOLDER DESCRIBING TOPOGRAPHIC MAPS AND SYMBOLS IS AVAILABLE ON REQUEST