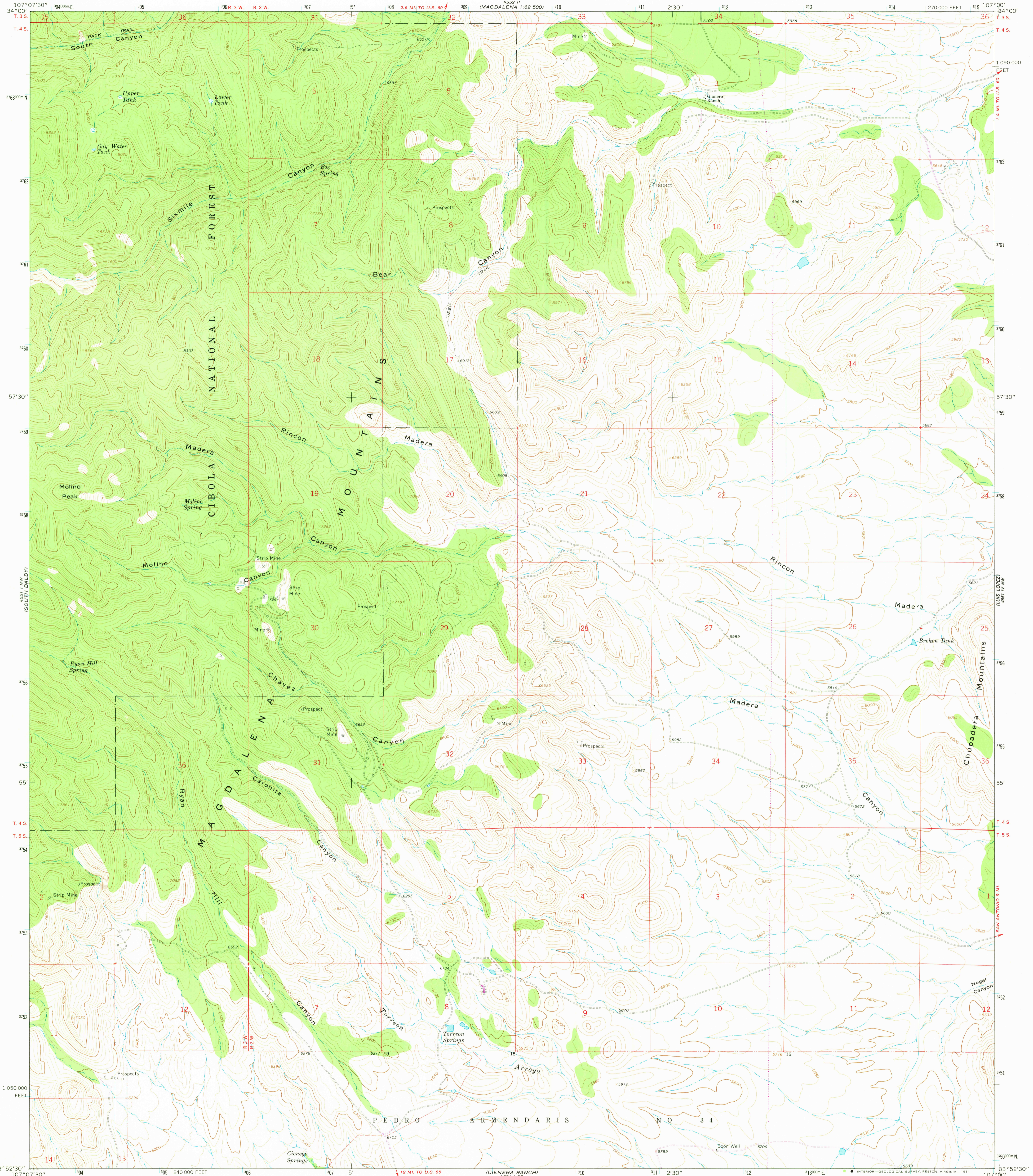


MAGDALENA
4551 I
1:62 500

UNITED STATES
DEPARTMENT OF THE INTERIOR
GEOLOGICAL SURVEY

MOLINO PEAK QUADRANGLE
NEW MEXICO—SOCORRO CO.
7.5 MINUTE SERIES (TOPOGRAPHIC)

MAGDALENA
4551 I
1:62 500



Mapped, edited, and published by the Geological Survey

Control by USGS and NOS/NOAA

Topography by photogrammetric methods from aerial photographs taken 1964. Field checked 1965

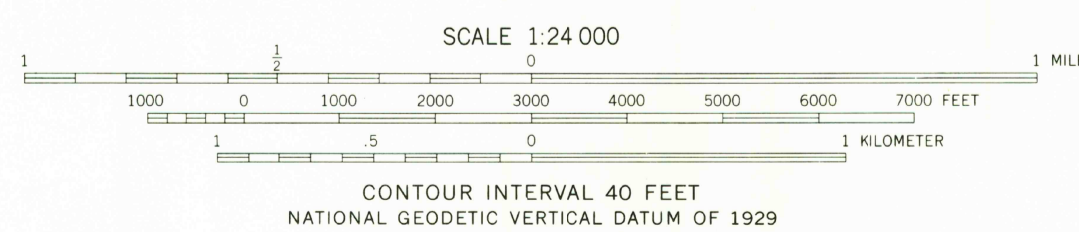
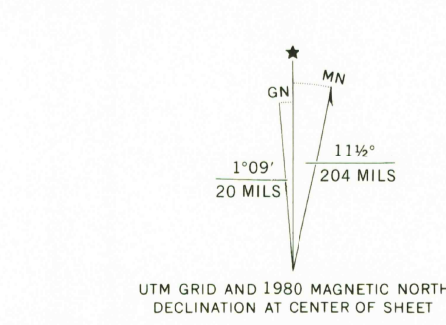
Polycyclic projection. 1927 North American datum 10,000-foot grid based on New Mexico coordinate system, central zone

1000-meter Universal Transverse Mercator grid ticks, zone 13, shown in blue

Fine red dashed lines indicate selected fence lines

Where omitted, land lines have not been established

To place on the predicted North American Datum 1983 move the projection lines 4 meters south and 53 meters east as shown by dashed corner ticks



THIS MAP COMPLIES WITH NATIONAL MAP ACCURACY STANDARDS
FOR SALE BY U. S. GEOLOGICAL SURVEY, DENVER, COLORADO 80225, OR RESTON, VIRGINIA 22092
A FOLDER DESCRIBING TOPOGRAPHIC MAPS AND SYMBOLS IS AVAILABLE ON REQUEST

Revisions shown in purple compiled from aerial photographs taken 1978 and other source data. This information not field checked. Map edited 1980



ROAD CLASSIFICATION
Light-duty Unimproved dirt

USGS
HISTORICAL FILES
MOLINO PEAK QUADRANGLE

MOLINO PEAK, N. MEX.

N3352.5—W10700/7.5

1965
PHOTOREVISED 1980
DMA 4551 I NE—SERIES V881

MAY 28 1981

2/50