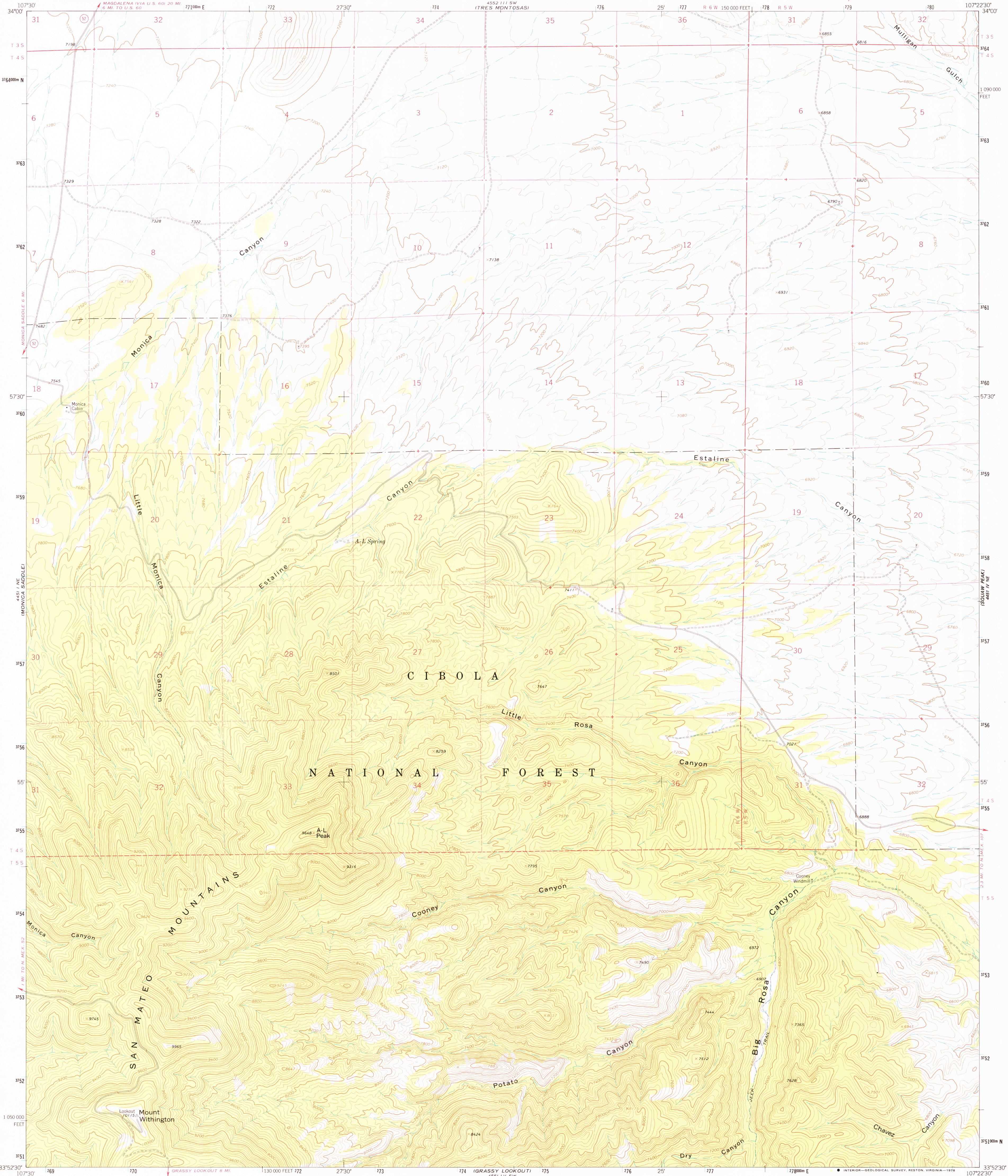
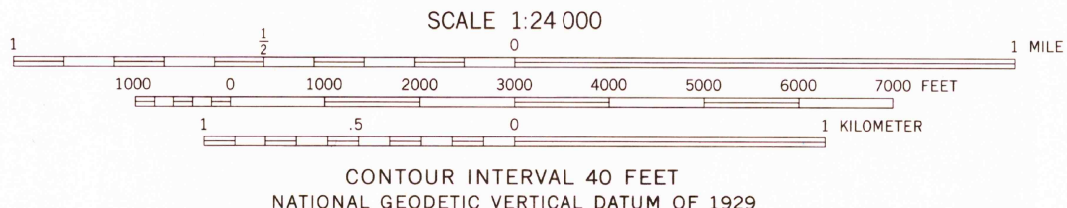
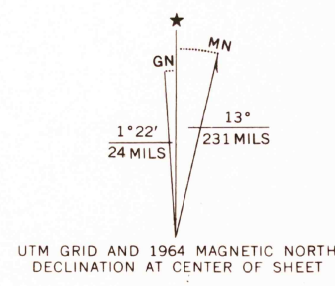


UNITED STATES  
DEPARTMENT OF THE INTERIOR  
GEOLOGICAL SURVEY

MOUNT WITHINGTON QUADRANGLE  
NEW MEXICO-SOCORRO CO.  
7.5 MINUTE SERIES (TOPOGRAPHIC)



Mapped by the U.S. Forest Service  
Edited and published by the Geological Survey  
Control by USGS, USC&GS, and U.S. Forest Service  
Topography by photogrammetric methods from aerial  
photographs taken 1952 and 1956. Field checked by USGS 1964  
Polyconic projection. 1927 North American datum  
10,000-foot grid based on New Mexico coordinate system, central zone  
1000-meter Universal Transverse Mercator grid ticks,  
zone 13, shown in blue  
Fine red dashed lines indicate selected fence lines  
Certain land lines are omitted because of insufficient data



ROAD CLASSIFICATION  
Light-duty ——— Unimproved dirt ———  
○ State Route



USGS  
Historical File  
Topographic Division

MOUNT WITHINGTON, N. MEX.  
N352.5-W10722.5/7.5  
1964

AMS 4551 IV NW—SERIES V881

THIS MAP COMPLIES WITH NATIONAL MAP ACCURACY STANDARDS  
FOR SALE BY U.S. GEOLOGICAL SURVEY, DENVER, COLORADO 80225, OR RESTON, VIRGINIA 22092  
A FOLDER DESCRIBING TOPOGRAPHIC MAPS AND SYMBOLS IS AVAILABLE ON REQUEST

SEP 19 1978

2600