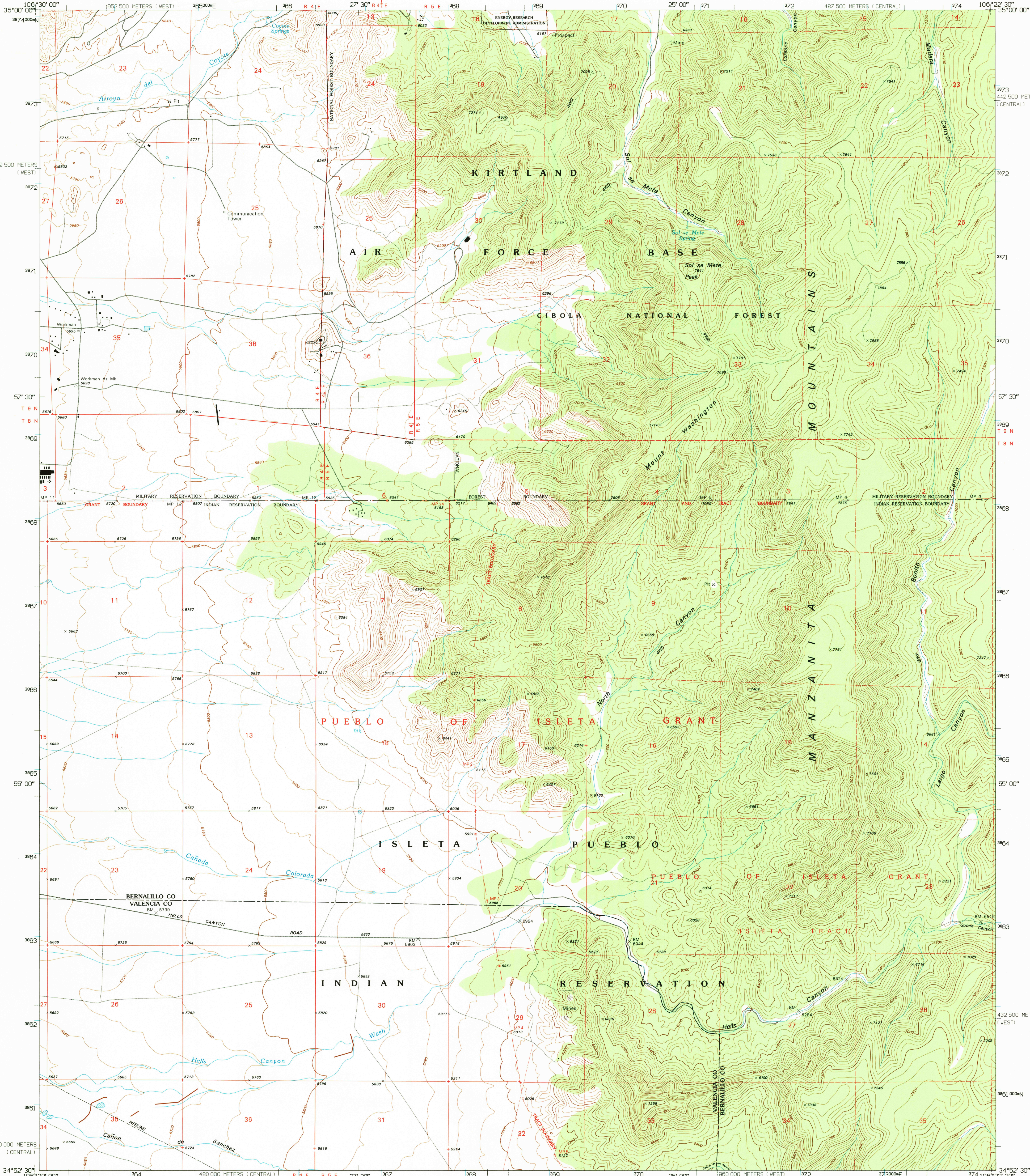


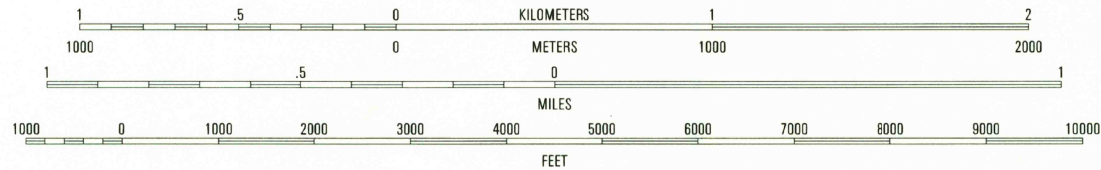
UNITED STATES  
DEPARTMENT OF THE INTERIOR  
GEOLOGICAL SURVEY

MOUNT WASHINGTON QUADRANGLE  
NEW MEXICO  
7.5-MINUTE SERIES (TOPOGRAPHIC)



Produced by the United States Geological Survey  
Compiled from imagery dated 1951. Revised from imagery  
dated 1991. PLS and survey control current as of 1954.  
Contours and elevations current as of 1951. Map edited 1995.  
North American Datum of 1983 (NAD 83). Projection and  
blue 1000-meter ticks: Universal Transverse Mercator, zone 13.  
2500-meter ticks: New Mexico Coordinate System of 1983  
central and west zones.  
North American Datum of 1927 (NAD 27) is shown by dashed  
corner ticks. The values of the shift between NAD 83  
and NAD 27 for 7.5-minute intersections are obtainable from  
National Geodetic Survey NADCON software.  
There may be private inholdings within the boundaries of  
the National or State reservations shown on this map.

UTM GRID AND 1995 MAGNETIC NORTH  
DECLINATION AT CENTER OF SHEET



QUADRANGLE LOCATION

ROAD CLASSIFICATION  
Primary highway  
hard surface .....  
Secondary highway  
hard surface .....  
Light-duty road, hard or  
improved surface .....  
Unimproved road .....

Interstate Route U.S. Route State Route

1	2	3
4	5	6
7	8	9

MOUNT WASHINGTON, NM  
34106-H4-TF-024

1991

DMA 4753 IV NW-SERIES V881

THIS MAP COMPLIES WITH NATIONAL MAP ACCURACY STANDARDS  
FOR SALE BY U.S. GEOLOGICAL SURVEY  
DENVER, COLORADO 80225, OR RESTON, VIRGINIA 22092  
A FOLDER DESCRIBING TOPOGRAPHIC MAPS AND SYMBOLS IS AVAILABLE ON REQUEST.

USGS AND HISTORICAL  
MAP ARCHIVES  
SEP 22 1995  
REC'D FILE COPY

