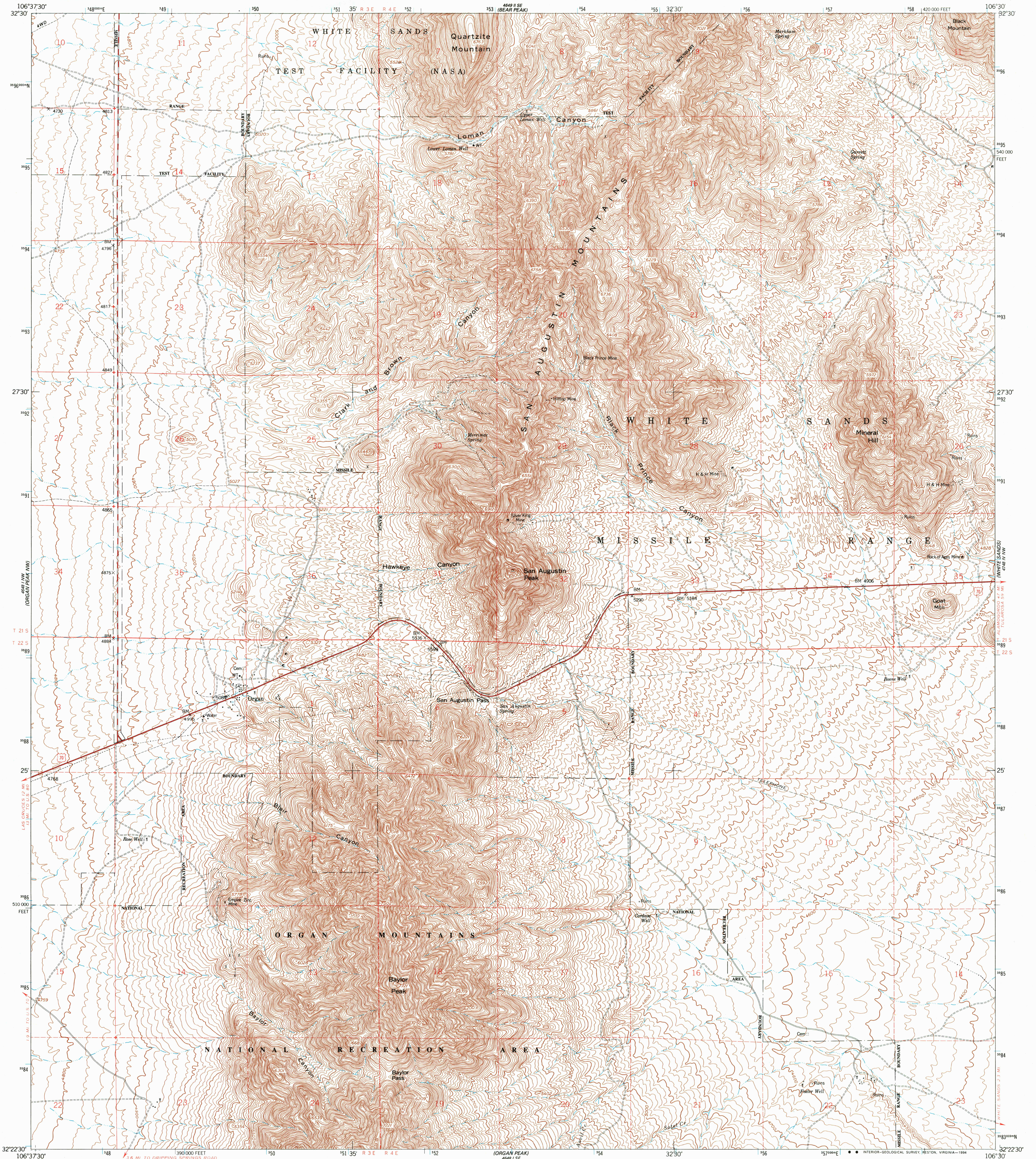
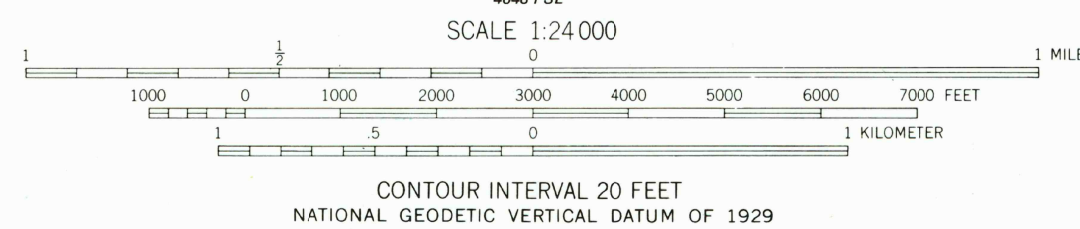
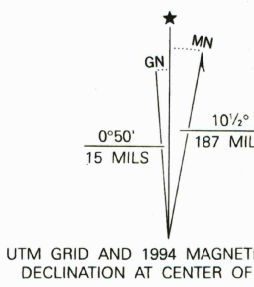


UNITED STATES  
DEPARTMENT OF THE INTERIOR  
GEOLOGICAL SURVEY

ORGAN QUADRANGLE  
NEW MEXICO-DONA ANA CO.  
7.5 MINUTE SERIES (TOPOGRAPHIC)



Mapped by the Defense Mapping Agency  
Produced by the U. S. Geological Survey  
Control by USGS and NOS/NOAA  
Compiled from aerial photographs taken 1954. Field checked 1955  
North American Datum of 1927 (NAD 27). Projection and  
10000-foot ticks: New Mexico Coordinate System, central zone  
(Transverse Mercator)  
Blue 1000-meter Universal Transverse Mercator ticks, zone 13  
North American Datum of 1983 (NAD 83) is shown by dashed  
corner ticks. The values of the shift between NAD 27 and NAD 83  
for 7.5-minute intersections are obtainable from National Geodetic  
Survey NADCON software  
There may be private inholdings within the boundaries of the  
National or State reservations shown on this map  
Photospected from 1990 source; no major culture or  
drainage changes observed. Boundaries and names  
revised 1994



THIS MAP COMPLIES WITH NATIONAL MAP ACCURACY STANDARDS  
FOR SALE BY U. S. GEOLOGICAL SURVEY, DENVER, COLORADO 80225, OR RESTON, VIRGINIA 22092  
A FOLDER DESCRIBING TOPOGRAPHIC MAPS AND SYMBOLS IS AVAILABLE ON REQUEST



ROAD CLASSIFICATION

Primary highway, hard surface	Light-duty road, hard or improved surface
Secondary highway, hard surface	Unimproved road
Interstate Route	U. S. Route
	State Route

ORGAN, NM  
32106-D5-TF-024  
1955  
MINOR REVISION 1994  
DMA 4648 I NE-SERIES V881

USGS AND HISTORICAL  
MAP ARCHIVES  
NOV 17 1994  
REC'D FILE COPY