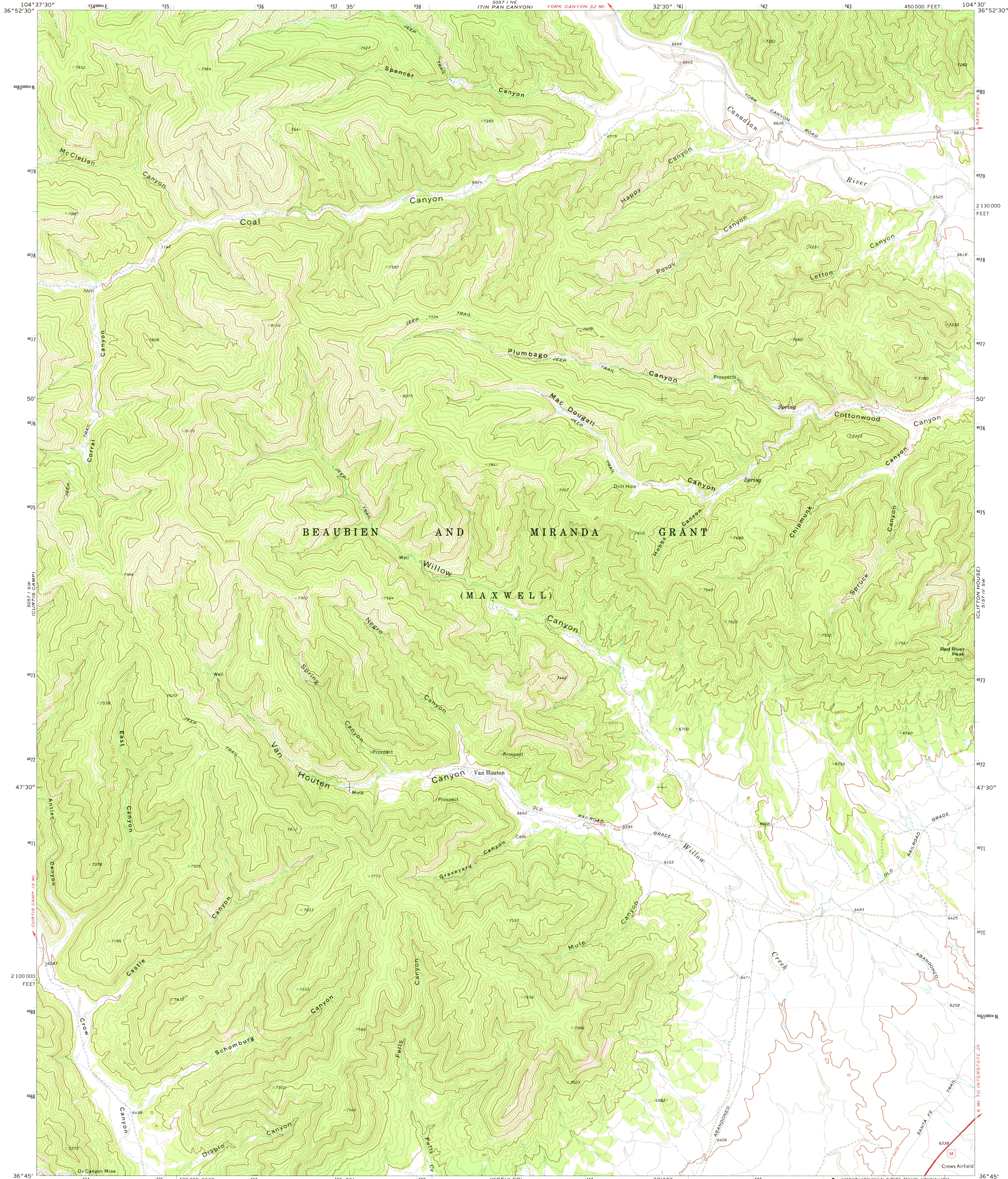
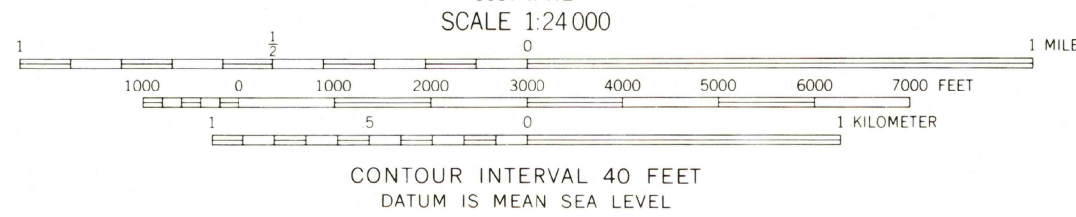
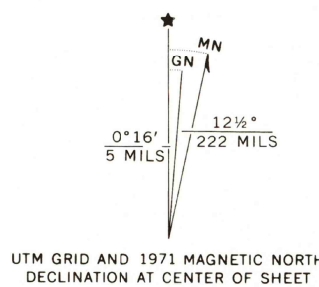


UNITED STATES
DEPARTMENT OF THE INTERIOR
GEOLOGICAL SURVEY

RED RIVER PEAK QUADRANGLE
NEW MEXICO—COLFAX CO.
7.5 MINUTE SERIES (TOPOGRAPHIC)
SE 1/4 BRILLIANT 15' QUADRANGLE



Mapped, edited, and published by the Geological Survey
Control by USGS and USC&GS
Topography by photogrammetric methods from aerial
photographs taken 1969. Field checked 1971
Projection and 10,000-foot grid ticks: New Mexico
coordinate system, east zone (transverse Mercator)
1000-meter Universal Transverse Mercator grid ticks,
zone 13, shown in blue. 1927 North American datum
Fine red dashed lines indicate selected fence lines



ROAD CLASSIFICATION
Primary highway, hard surface
Secondary highway, hard surface
Unimproved road
Interstate Route
U. S. Route
State Route

RED RIVER PEAK, N. MEX.
SE 1/4 BRILLIANT 15' QUADRANGLE
N3645—W10430/7.5

1971
AMS 5057 1 SE—SERIES V881

THIS MAP COMPLIES WITH NATIONAL MAP ACCURACY STANDARDS
FOR SALE BY U. S. GEOLOGICAL SURVEY, DENVER, COLORADO 80225, OR RESTON, VIRGINIA 22092
A FOLDER DESCRIBING TOPOGRAPHIC MAPS AND SYMBOLS IS AVAILABLE ON REQUEST

MAY 16 1974