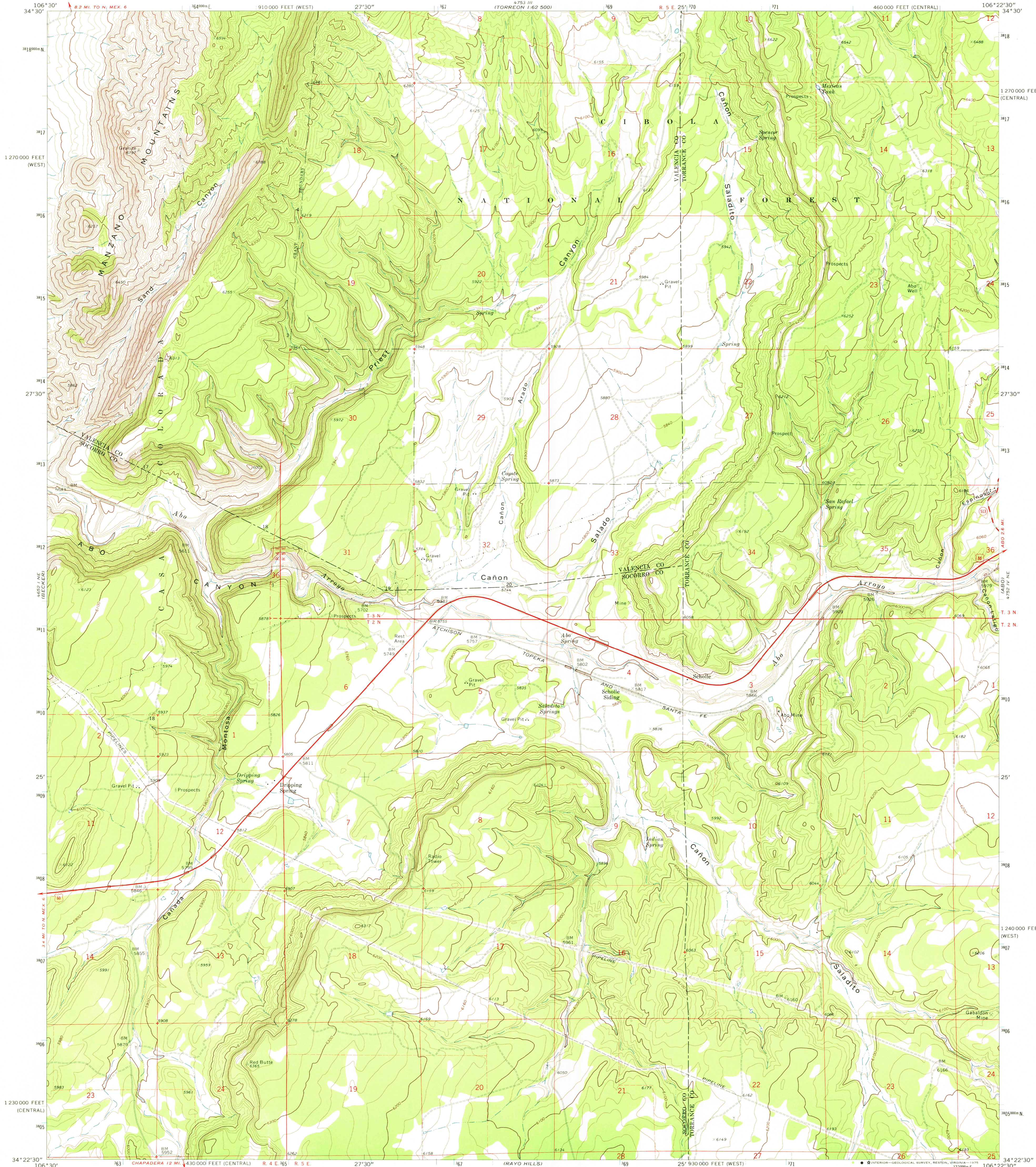


UNITED STATES
DEPARTMENT OF THE INTERIOR
GEOLOGICAL SURVEY

SCHOLLE QUADRANGLE
NEW MEXICO
7.5 MINUTE SERIES (TOPOGRAPHIC)



Mapped, edited, and published by the Geological Survey

Control by USGS, USC&GS, and Defense Mapping Agency

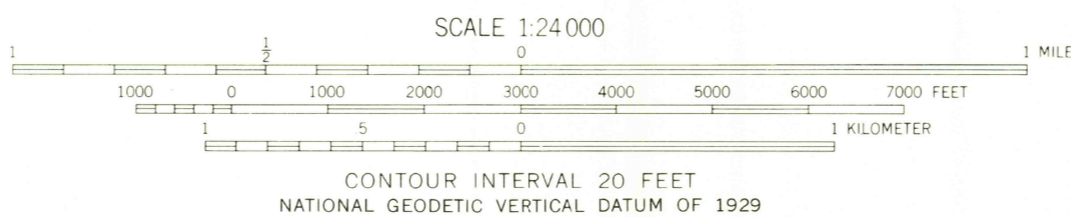
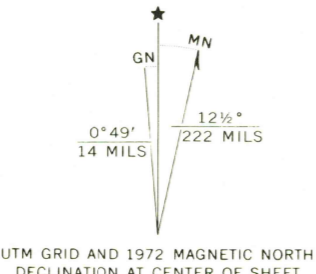
Topography by photogrammetric methods from aerial photographs taken 1971. Field checked 1972

Projection: New Mexico coordinate system, central zone (transverse Mercator)

10,000-foot grid ticks based on New Mexico coordinate system, central and west zones

1000-meter Universal Transverse Mercator grid ticks, zone 13, shown in blue. 1927 North American datum

Fine red dashed lines indicate selected fence lines



ROAD CLASSIFICATION	
Primary highway, hard surface	Light duty road, hard or improved surface
Secondary highway, hard surface	Unimproved road
Interstate Route	U. S. Route
	State Route

USGS
HISTORICAL FILE
TOPOGRAPHIC DIVISION

SCHOLLE, N. MEX.

N3422.5—W10622.5/7.5

1972

AMS 4752 IV NW—SERIES V881

THIS MAP COMPLIES WITH NATIONAL MAP ACCURACY STANDARDS
FOR SALE BY U.S. GEOLOGICAL SURVEY, DENVER, COLORADO 80225, OR RESTON, VIRGINIA 22092
A FOLDER DESCRIBING TOPOGRAPHIC MAPS AND SYMBOLS IS AVAILABLE ON REQUEST

MAY 21 1975
2800