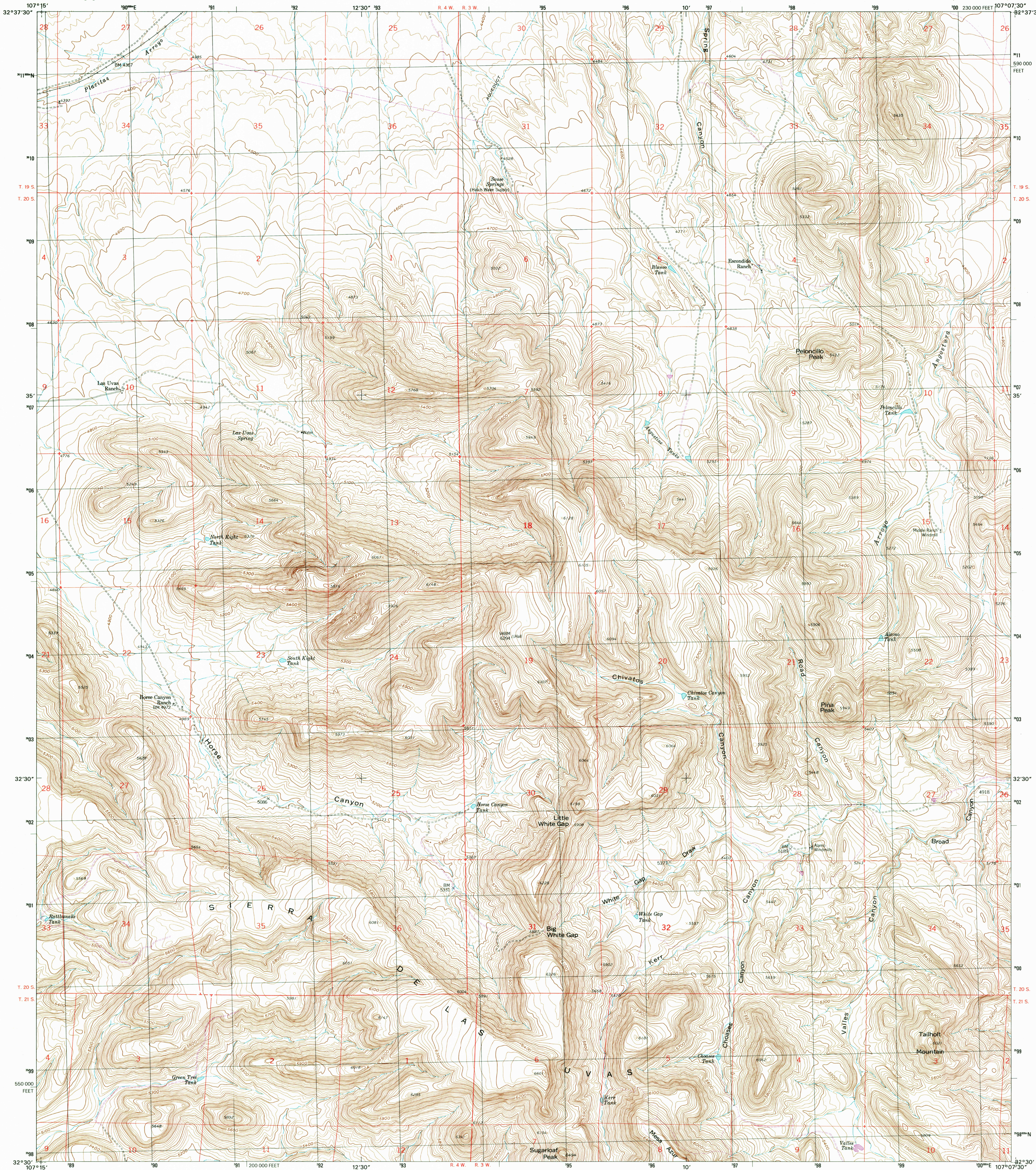


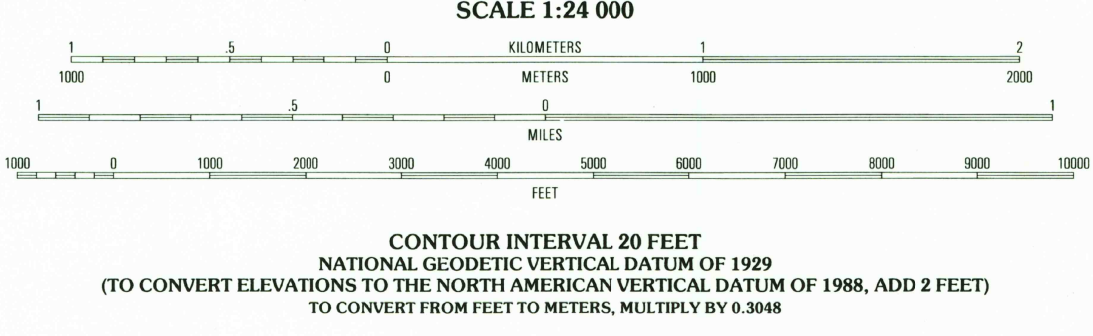
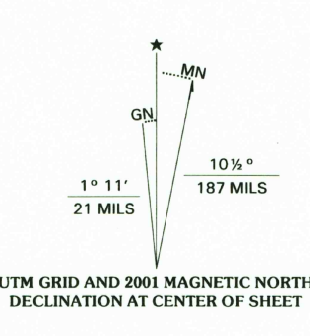


U.S. DEPARTMENT OF THE INTERIOR  
U.S. GEOLOGICAL SURVEY

SOUSE SPRINGS QUADRANGLE  
NEW MEXICO-DONA ANA CO.  
7.5-MINUTES SERIES (TOPOGRAPHIC)



Produced by the United States Geological Survey  
Topography compiled 1956. Planimetry derived from imagery taken 1976 and other sources. Photinspected using imagery taken 1996; no major culture or drainage changes observed. Public Land Survey System and survey control current as of 1959. Boundaries verified 2001  
Information shown in purple may not meet USGS content standards and may conflict with previously mapped contours  
North American Datum of 1927 (NAD 27). Projection and 1000-meter grid: Universal Transverse Mercator, zone 13 10 000-foot ticks: New Mexico Coordinate System of 1927 (central zone)  
North American Datum of 1983 (NAD 83) is shown by dashed corner ticks. The values of the shift between NAD 27 and NAD 83 for 7.5-minute intersections are obtainable from National Geodetic Survey NADCON software



RECEIVED  
JAN 31 2002  
USGS NWED  
HISTORICAL MAP ARCHIVES

SOUSE SPRINGS, NM  
1996

NIMA 4549 II SW-SERIES V881

QUADRANGLE LOCATION

1	2	3
4	5	6
7	8	9

1 Arroyo Cuelvo  
2 Hatch  
3 Rincon  
4 Hockett  
5 Sierra Alta  
6 Good Sight Peak NE  
7 Magdalena Peak  
8 Rough And Ready Hills

ADJOINING 7.5' QUADRANGLES

ROAD CLASSIFICATION

Primary highway  
hard surface .....  
Secondary highway  
hard surface .....  
Interstate Route  
U.S. Route  
State Route  
Light-duty road, hard or  
improved surface .....  
Unimproved road .....



THIS MAP COMPLIES WITH NATIONAL MAP ACCURACY STANDARDS  
FOR SALE BY U.S. GEOLOGICAL SURVEY, P.O. BOX 25286, DENVER, COLORADO 80225  
A FOLDER DESCRIBING TOPOGRAPHIC MAPS AND SYMBOLS IS AVAILABLE ON REQUEST