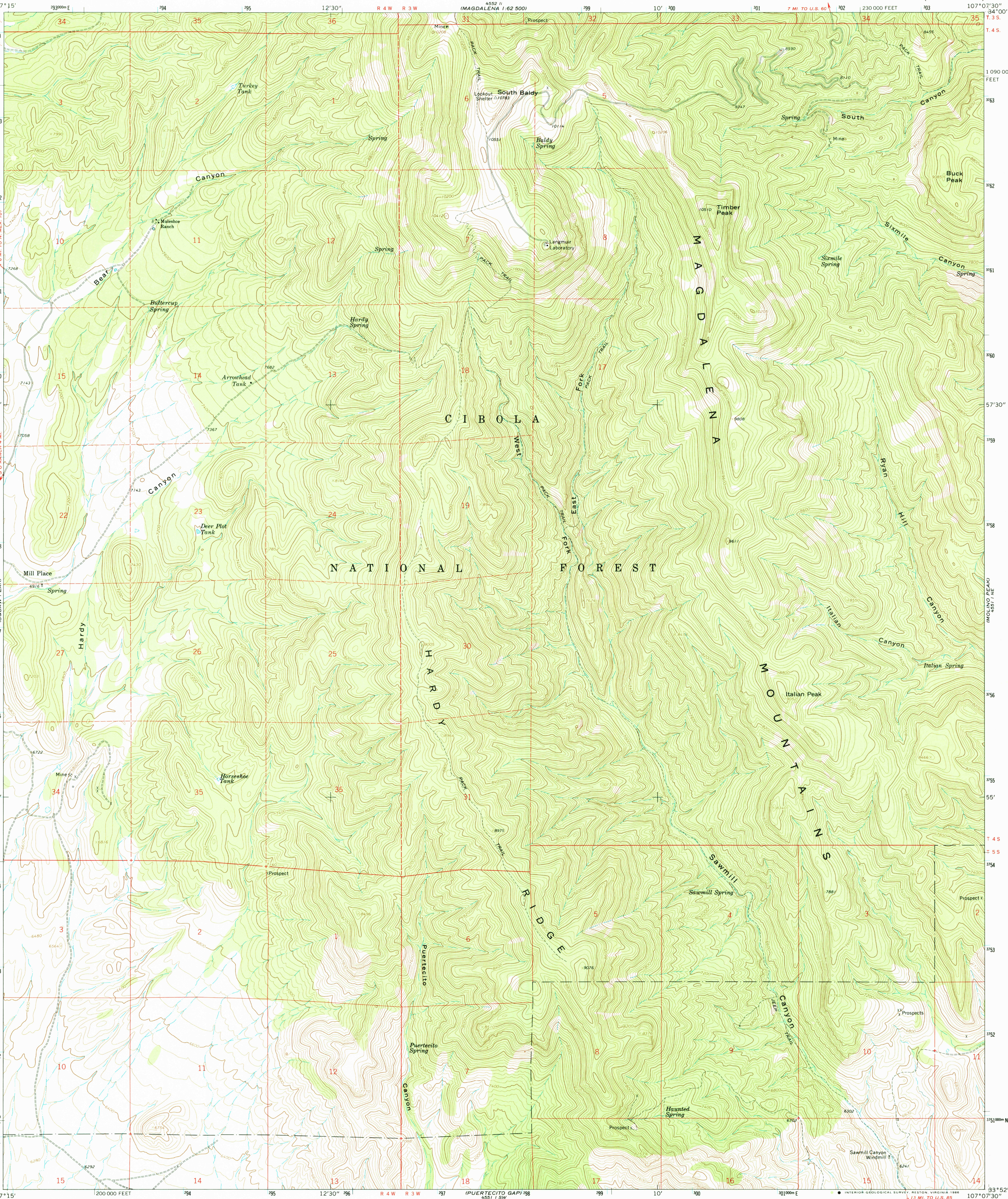


UNITED STATES
DEPARTMENT OF THE INTERIOR
GEOLOGICAL SURVEY

SOUTH BALDY QUADRANGLE
NEW MEXICO-SOCORRO CO.
7.5 MINUTE SERIES (TOPOGRAPHIC)



Maped, edited, and published by the Geological Survey
Control by USGS and USC&GS

Topography by photogrammetric methods from aerial
photographs taken 1964. Field checked 1965
Polyconic projection. 1927 North American Datum
10,000-foot grid based on New Mexico coordinate system,
central zone
1000-meter Universal Transverse Mercator grid ticks,
zone 13, shown in blue
Fine red dashed lines indicate selected fence lines
Where omitted, land lines have not been established
To place on the predicted North American Datum 1983
move the projection lines 4 meters south and
53 meters east as shown by dashed corner ticks

There may be private inholdings within the boundaries of
the National or State reservations shown on this map

THIS MAP COMPLIES WITH NATIONAL MAP ACCURACY STANDARDS
FOR SALE BY U. S. GEOLOGICAL SURVEY, DENVER, COLORADO 80225, OR RESTON, VIRGINIA 22092
A FOLDER DESCRIBING TOPOGRAPHIC MAPS AND SYMBOLS IS AVAILABLE ON REQUEST



ROAD CLASSIFICATION
Light duty
Unimproved dirt
SOUTH BALDY, N. MEX.
33107-H2-TF-024
1965
DMA 4551 1 NW-SERIES V881