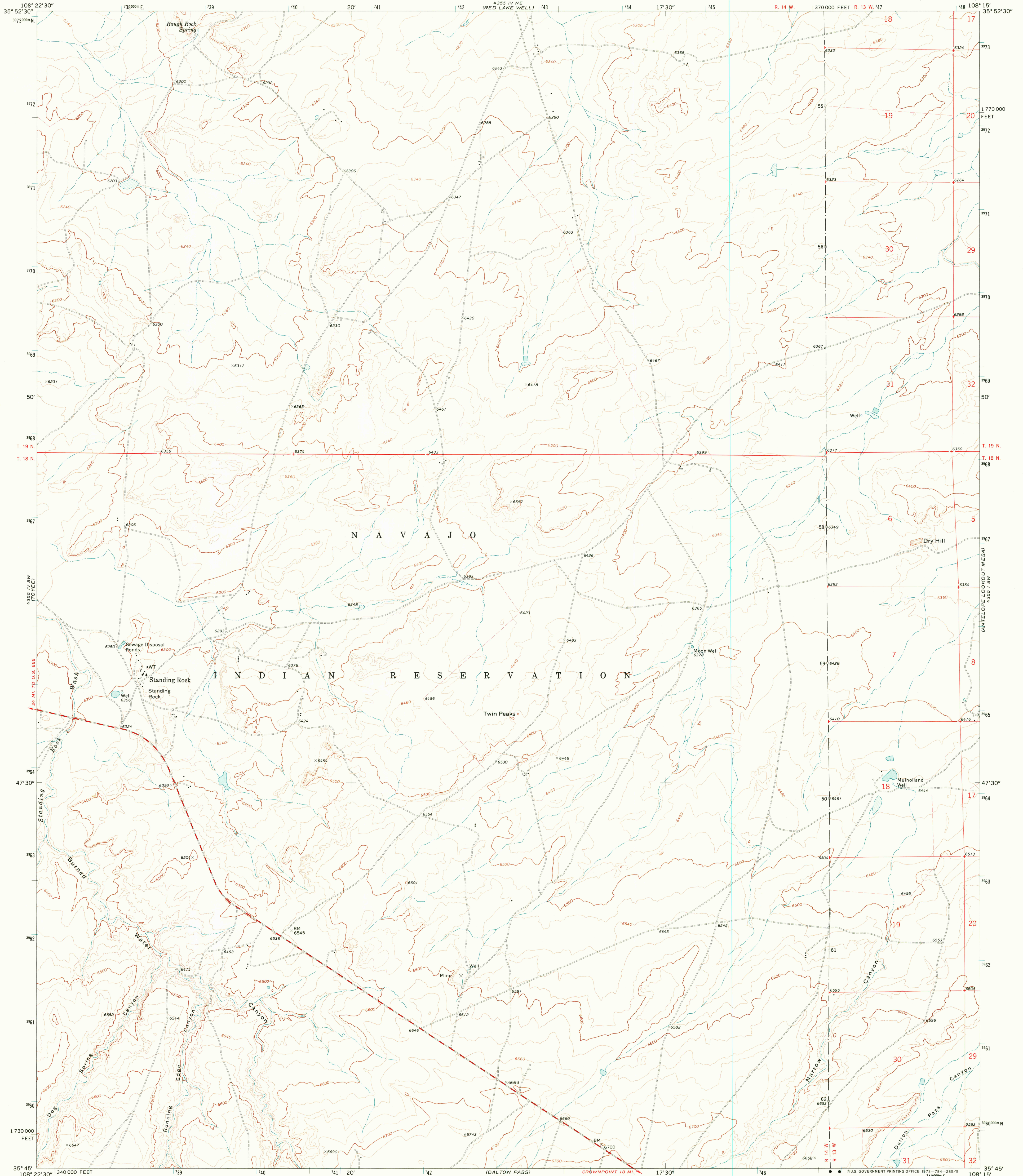
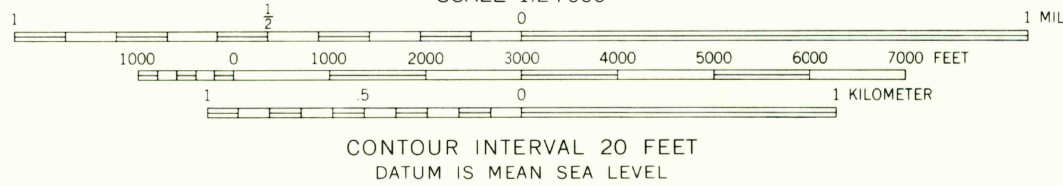
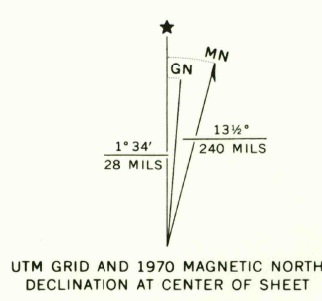


UNITED STATES  
DEPARTMENT OF THE INTERIOR  
GEOLOGICAL SURVEY

STANDING ROCK QUADRANGLE  
NEW MEXICO—MC KINLEY CO.  
7.5 MINUTE SERIES (TOPOGRAPHIC)



Mapped, edited, and published by the Geological Survey  
Control by USGS and USC&GS  
Topography by photogrammetric methods from aerial  
photographs taken 1969. Field checked 1970  
Projection and 10,000-foot grid ticks: New Mexico  
coordinate system, west zone (transverse Mercator)  
1000-meter Universal Transverse Mercator grid ticks,  
zone 12, shown in blue. 1927 North American datum  
Fine red dashed lines indicate selected fence lines  
Where omitted, land lines have not been established



ROAD CLASSIFICATION

Primary highway, hard surface	Light-duty road, hard or improved surface
Secondary highway, hard surface	Unimproved road
Interstate Route	U. S. Route
	State Route

NEW MEXICO

QUADRANGLE LOCATION

STANDING ROCK, N. MEX.  
N3545—W10815/7.5

1970

AMS 4355 IV SE—SERIES V81

OCT 3 1973

2500

50 feet