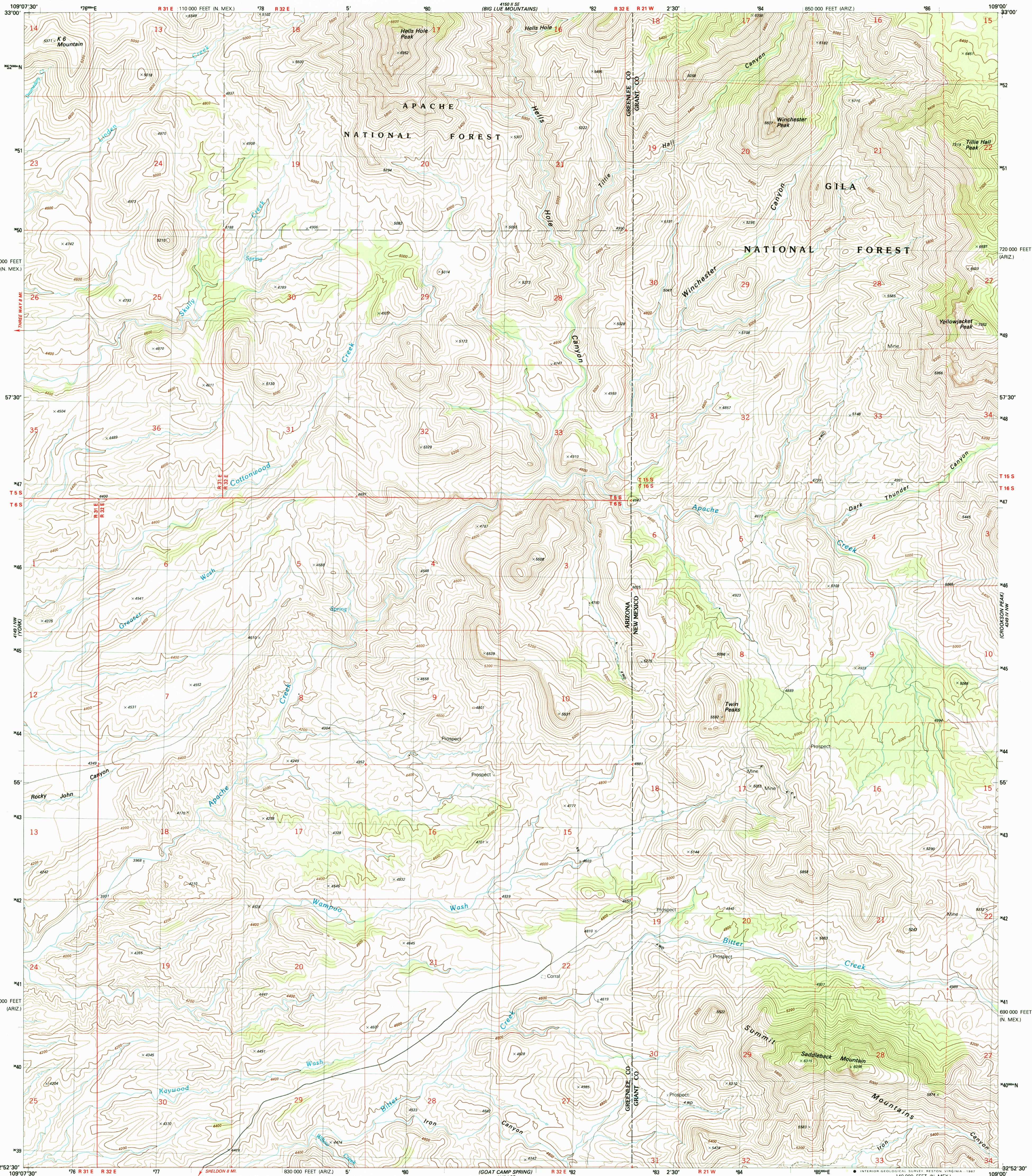


104° 30' 00" W  
33° 00' 00" N

UNITED STATES  
DEPARTMENT OF THE INTERIOR  
GEOLOGICAL SURVEY

TILLIE HALL PEAK QUADRANGLE  
NEW MEXICO-ARIZONA  
7.5 MINUTE SERIES (TOPOGRAPHIC)  
NE 4 YORK VALLEY 15' QUADRANGLE

109° 00' 00" W  
33° 00' 00" N

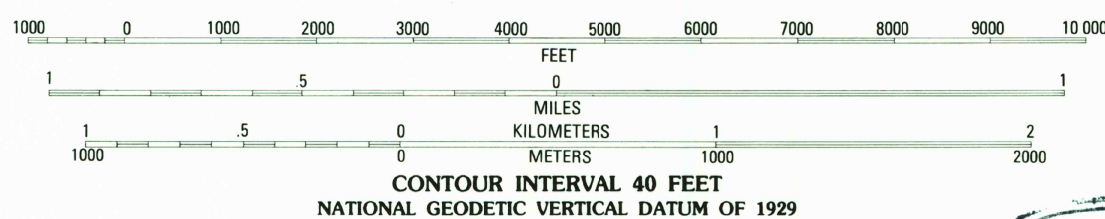
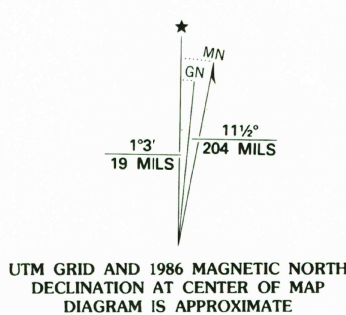


Produced by the United States Geological Survey  
Control by USGS and NOS/NOAA

Compiled by photogrammetric methods from aerial photographs  
taken 1981. Field checked 1983. Map edited 1986

Projection: Arizona coordinate system, east zone  
(transverse Mercator)  
(10,000-foot grid ticks; Arizona coordinate system, east zone  
and New Mexico coordinate system, west zone  
1000-meter Universal Transverse Mercator grid, zone 12  
1927 North American Datum  
To place on the predicted North American Datum 1983  
move the projection lines 5 meters south and  
58 meters east as shown by dashed corner ticks

Fine red dashed lines indicate selected fence and field lines  
generally visible on aerial photographs. This information is unchecked  
There may be private inholdings within the boundaries of  
the National or State reservations shown on this map



CONTOUR INTERVAL 40 FEET  
NATIONAL GEODETIC VERTICAL DATUM OF 1929

THIS MAP COMPLIES WITH NATIONAL MAP ACCURACY STANDARDS  
FOR SALE BY U. S. GEOLOGICAL SURVEY, DENVER, COLORADO 80225, OR RESTON, VIRGINIA 22092  
A FOLDER DESCRIBING TOPOGRAPHIC MAPS AND SYMBOLS IS AVAILABLE ON REQUEST



QUADRANGLE LOCATION

ROAD CLASSIFICATION  
Primary highway, . . . . . Light-duty road, hard or  
hard surface . . . . . improved surface . . .  
Secondary highway, . . . . . Unimproved road . . .  
hard surface . . . . .  
Interstate Route U. S. Route State Route

TILLIE HALL PEAK, N. MEX.-ARIZ.  
NE 4 YORK VALLEY 15' QUADRANGLE  
32109-H1-TF-024

1986

DMA 4149 I NE-SERIES V881