

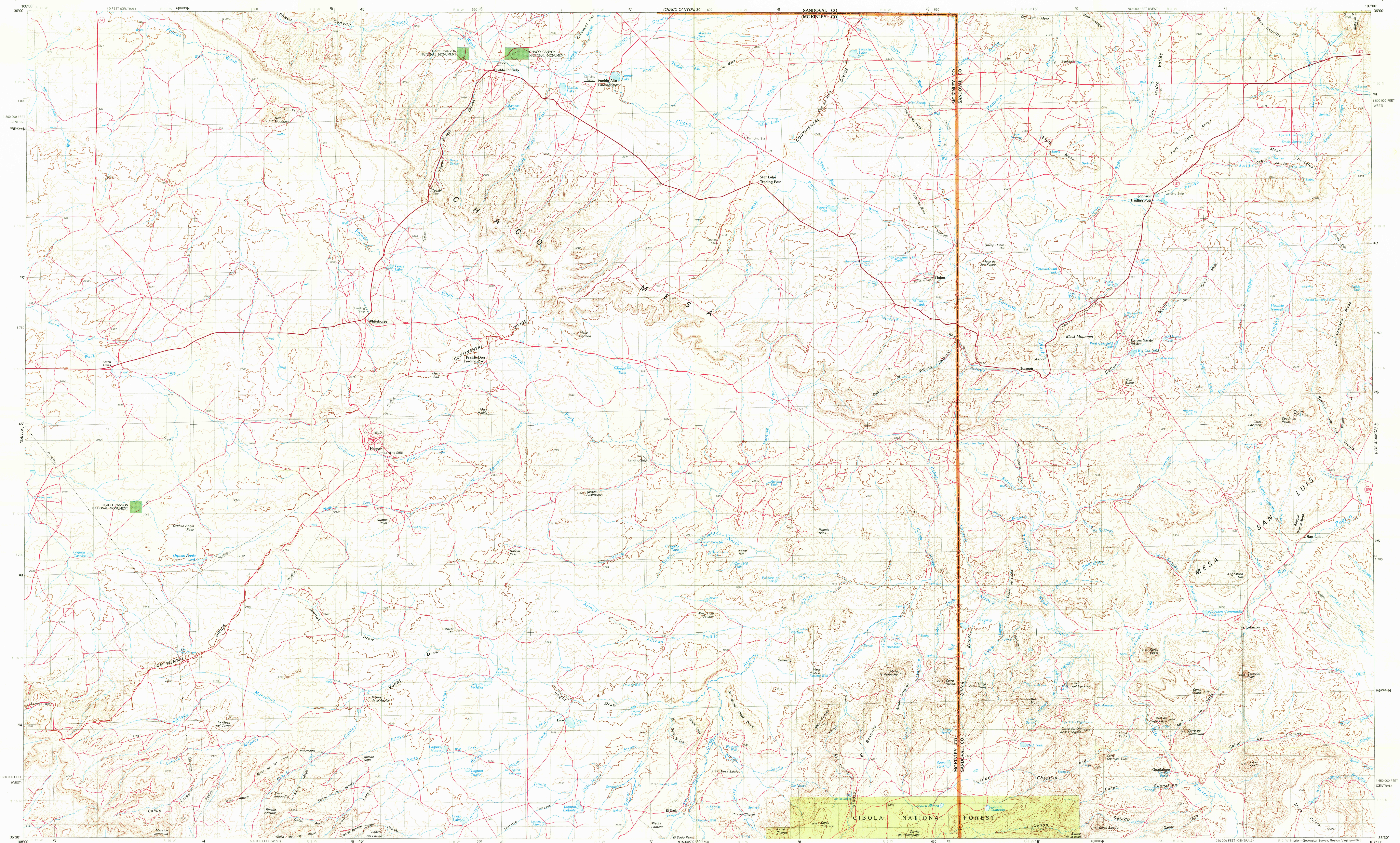
Geographic 1:250,000

UNITED STATES
DEPARTMENT OF THE INTERIOR
GEOLOGICAL SURVEY

CONTROL MANAGEMENT
DO NOT REMOVE

CHACO MESA QUADRANGLE
NEW MEXICO
1:100 000-SCALE SERIES (TOPOGRAPHIC)

FILE COPY

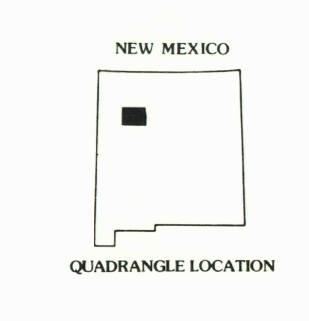
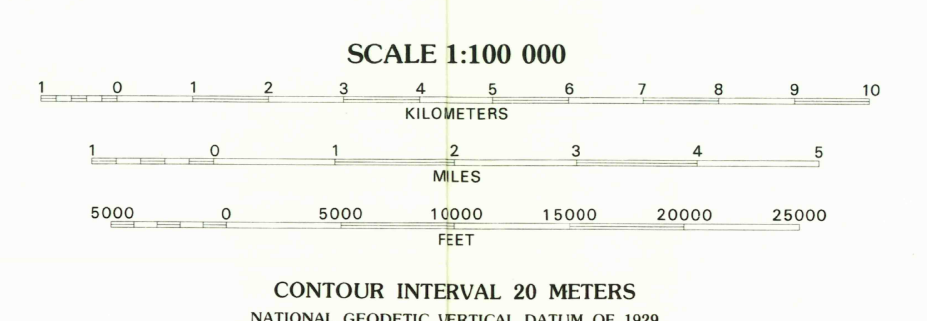
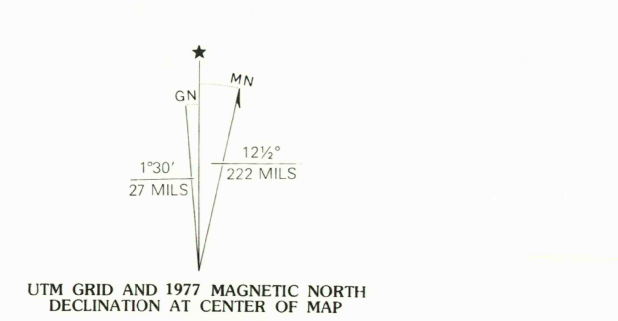


Mapped, edited, and published by the Geological Survey
Compiled from USGS 1:24 000-scale topographic maps
dated 1960-1970. See index for dates of individual maps.
Partially revised from aerial photographs taken 1974-76 and from
other official sources. Revised information not field checked
Map edited 1977.
Projection and 10 000-meter grid, zone 13 Universal Transverse Mercator
50 000-foot grid ticks based on New Mexico coordinate
system, west and central zones. 1927 North American datum

INDEX TO 1:24 000-SCALE MAPS

1	2	3	4	5	6	7	8
9	10	11	12	13	14	15	16
17	18	19	20	21	22	23	24
25	26	27	28	29	30	31	32

1 Seven Lakes NW-1970
2 Seven Lakes NE-1970
3 Pueblo Arch Trading Post-1960
4 Pueblo Arch-1961
5 San Juan-1961
6 San Juan-1961
7 San Juan-1961
8 San Juan-1961
9 San Juan-1961
10 San Juan-1961
11 San Juan-1961
12 San Juan-1961
13 San Juan-1961
14 San Juan-1961
15 San Juan-1961
16 San Juan-1961
17 Laguna Canyon-1963
18 Laguna Canyon-1963
19 Laguna Canyon-1963
20 Laguna Canyon-1963
21 Laguna Canyon-1963
22 Laguna Canyon-1963
23 Laguna Canyon-1963
24 Laguna Canyon-1963
25 Laguna Canyon-1963
26 Laguna Canyon-1963
27 Laguna Canyon-1963
28 Laguna Canyon-1963
29 Laguna Canyon-1963
30 Laguna Canyon-1963
31 Laguna Canyon-1963
32 Laguna Canyon-1963



- LEGEND
- Perennial stream, lake
 - Intermittent stream, lake
 - Village or locality
 - Landmark structure
 - Public park or recreation area
 - Forest or game land area
 - Other public area or Military or Indian reservation
- ROAD CLASSIFICATION
- Primary highway, hard surface
 - Secondary highway, hard surface
 - Light-duty road, hard or improved surface
 - Street or unimproved road
 - Trail
 - Interstate route
 - U.S. route
 - State route
- CHACO MESA, NEW MEXICO
N5330-W10700:30x60
1977