

Projection and 10 000-meter grid, zone 13
Universal Transverse Mercator
25 000-foot grid ticks based on New Mexico coordinate
system, central and west zones. 1927 North American datum
To place on the predicted North American Datum 1983 move
the projection lines 2 meters north and 54 meters east

CONTOUR INTERVAL 50 METERS
NATIONAL GEODETIC VERTICAL DATUM OF 1929

THIS MAP COMPLIES WITH NATIONAL MAP ACCURACY STANDARD

FOR SALE BY U.S. GEOLOGICAL SURVEY
DENVER, COLORADO 80225, OR RESTON, VIRGINIA 22092

Meters	Feet
1	3.2808
2	6.5617
3	9.8425
4	13.1234
5	16.4042
6	19.6850
7	22.9659
8	26.2467
9	29.5276
10	32.8084

To convert meters to feet multiply by 3.2808

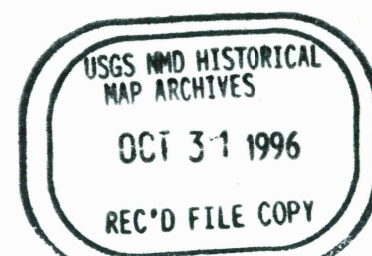
To convert feet to meters multiply by 0.3048

GN
MN
13°
27.1 MILS
231 MILS

UTM grid convergence (GN and 1980 magnetic declination) (MN) at center of map
Diagram is approximate

1	2
4	5
6	7 8

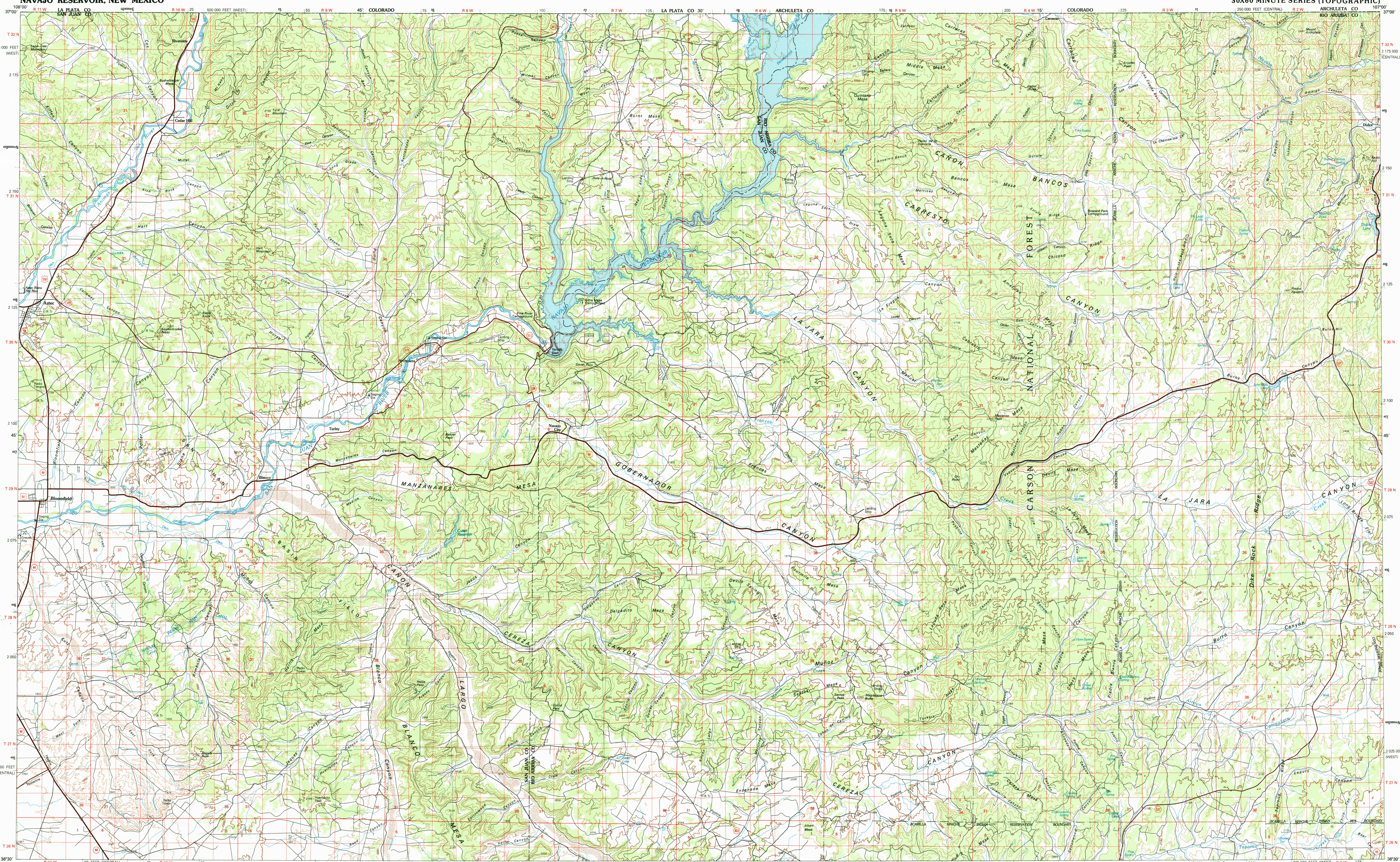
1 Cortez
2 Durango
3 Antonio
4 Farmington
5 Chama
6 Taos
7 Chaco Canyon
8 Abiquiu



ISBN 0-607-37950-
9 780607 379501

Primary highway, hard surface
Secondary highway, hard surface
Light duty road, principal street, hard or improved surface
Other road or street; trail
Route marker: Interstate, U. S. State,
Railroad, standard gauge; narrow gauge;
Bridge; overpass; underpass
Tunnel; road; railroad
Built up area; locality; elevation
Airport; landing field; landing strip
National boundary
State boundary
County boundary
National or State reservation boundary
Land grant boundary
U. S. public lands: range, township; section
Range, township; section line: protected
Range reservation line; pipeline
Dam; dam with lock
Canal; building
Windmill; water well; spring
Mine shaft; adit or cave; mine; quarry; gravel pit
Campground; picnic area; U. S. location monument
Ruins; cliff dwelling
Dissected surface: strip mine, lake, sand
Contours: index, intermediate; supplementary
Bathymetric contours: index, intermediate
Stream, lake: perennial; intermittent
Rapid, large to small; falls, large and small
Area to be submerged; marsh, swamp
Land subject to controlled inundation, woodland
Scrub, mangrove
Orchard; vineyard

A pamphlet describing topographic maps is available on request.



NAVAJO RESERVOIR, NEW MEXICO
N3630-W10700/30x60

1980

