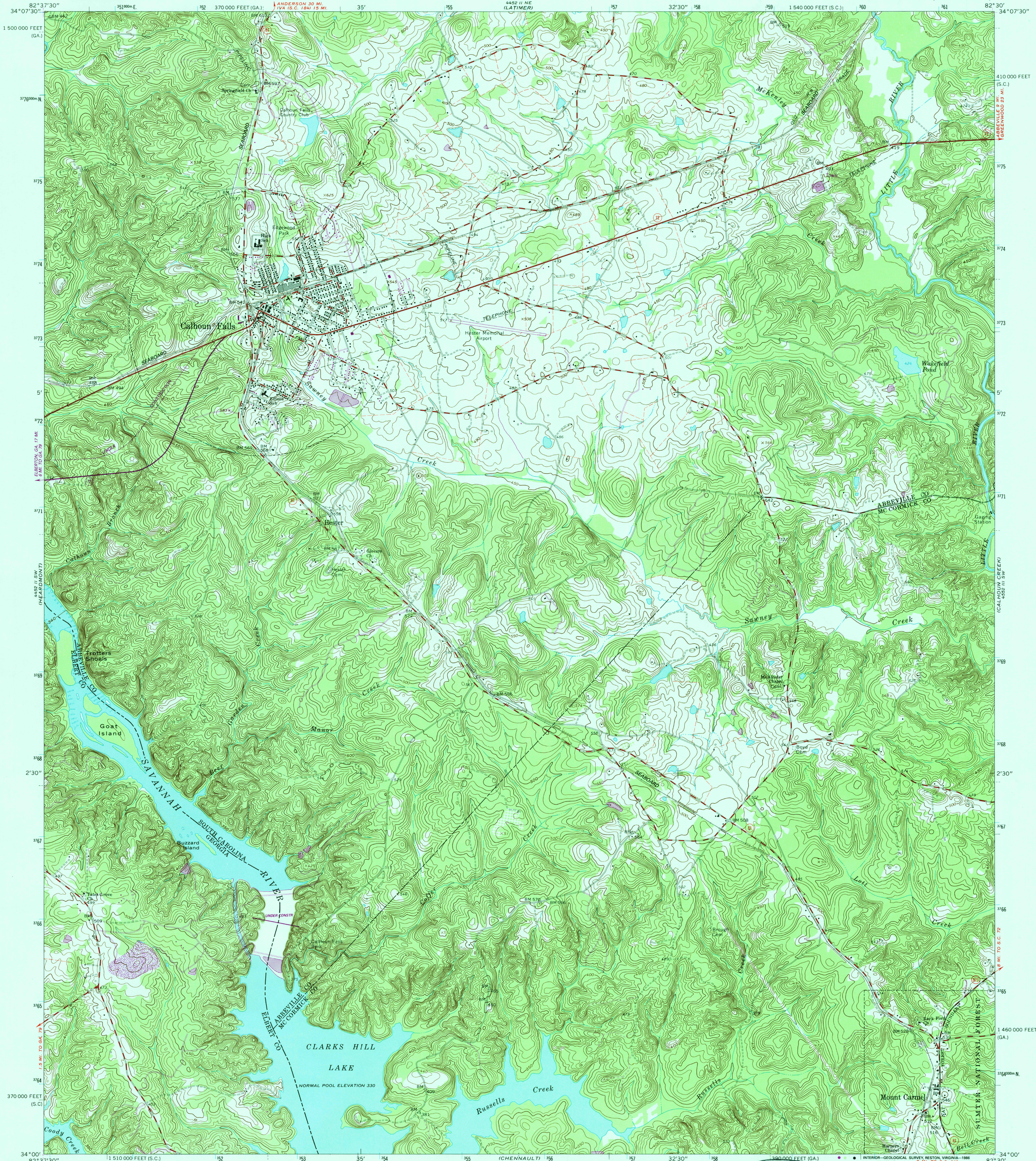
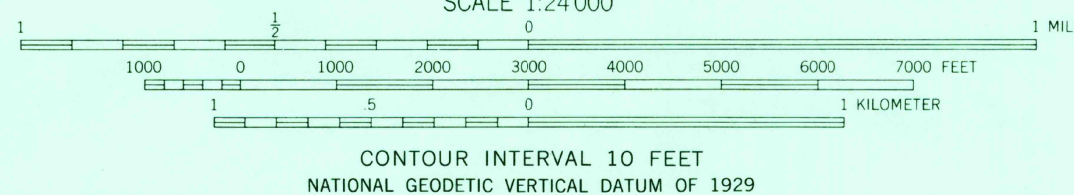
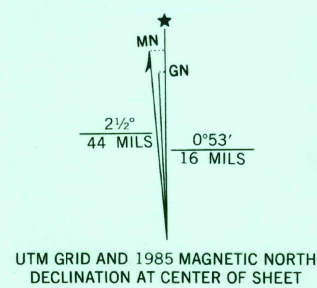


UNITED STATES
DEPARTMENT OF THE INTERIOR
GEOLOGICAL SURVEY

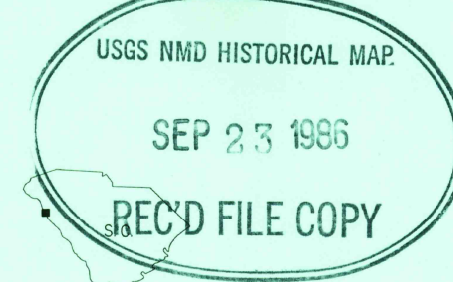
CALHOUN FALLS QUADRANGLE
SOUTH CAROLINA—GEORGIA
7.5 MINUTE SERIES (TOPOGRAPHIC)



Mapped, edited, and published by the Geological Survey
Control by USGS, USC&GS, USCE, and
South Carolina Geodetic Survey
Topography by photogrammetric methods from aerial
photographs taken 1962. Field checked 1964
Polyconic projection. 1927 North American datum
10,000-foot grid based on South Carolina coordinate
system, north zone, and Georgia coordinate system, east zone
1000-meter Universal Transverse Mercator grid ticks,
zone 17, shown in blue
To place on the predicted North American Datum 1983,
move the projection lines 11 meters south and
13 meters west as shown by dashed corner ticks
There may be private inholdings within the boundaries of
the National or State reservations shown on this map



THIS MAP COMPLIES WITH NATIONAL MAP ACCURACY STANDARDS
FOR SALE BY U.S. GEOLOGICAL SURVEY, RESTON, VIRGINIA 22092
A FOLDER DESCRIBING TOPOGRAPHIC MAPS AND SYMBOLS IS AVAILABLE ON REQUEST



QUADRANGLE LOCATION
Revisions shown in purple compiled in cooperation with State of Georgia
agencies from aerial photographs taken 1981 and other sources
This information not field checked. Map edited 1985

| ROAD CLASSIFICATION | |
|---------------------|-----------------|
| Heavy-duty | Light-duty |
| Medium-duty | Unimproved dirt |
| State Route | |

CALHOUN FALLS, S.C.—GA.
34082-A5-TF-024

1964
PHOTOREVISED 1985
DMA 4452 II SE-SERIES V846