

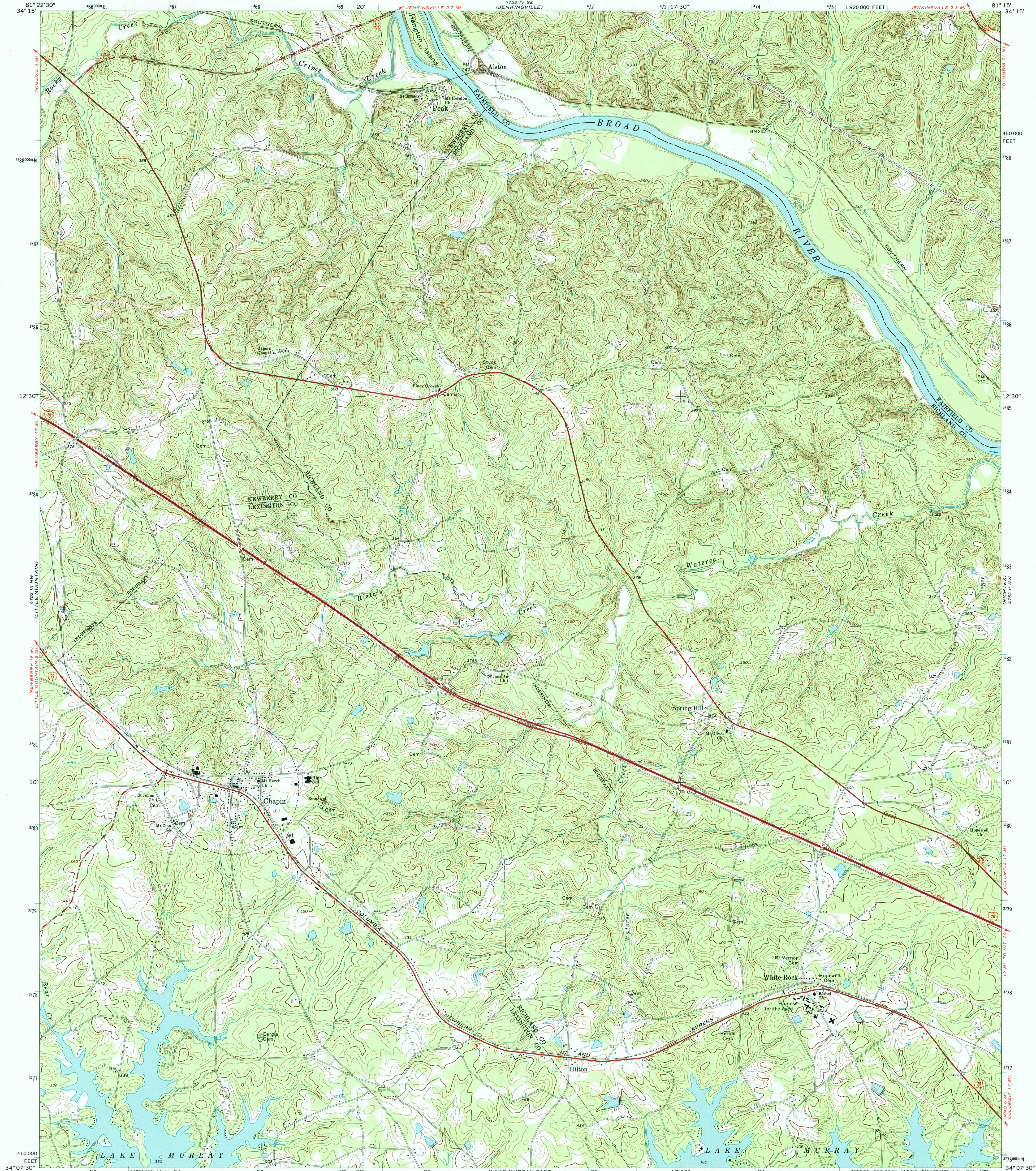
4752 IV SW  
(POMARIA)



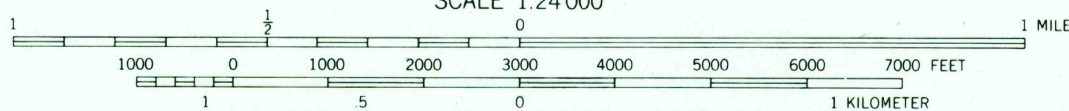
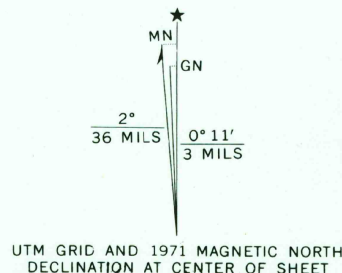
U.S. DEPARTMENT OF THE INTERIOR  
U.S. GEOLOGICAL SURVEY

CHAPIN QUADRANGLE  
SOUTH CAROLINA  
7.5 MINUTE SERIES (TOPOGRAPHIC)

4752 IV SW  
(ROCK)



Maped, edited, and published by the Geological Survey  
Control by USGS, USC&GS, and South Carolina Geodetic Survey  
Topography by photogrammetric methods from aerial  
photographs taken 1971. Field checked 1971  
Projection and 10,000-foot grid ticks: South Carolina  
coordinate system, north zone (Lambert conformal conic)  
1000-meter Universal Transverse Mercator grid ticks,  
zone 17, shown in blue. 1927 North American datum  
Fine red dashed lines indicate selected fence and field lines where  
generally visible on aerial photographs. This information is unchecked



CONTOUR INTERVAL 10 FEET  
DATUM IS MEAN SEA LEVEL

THIS MAP COMPLIES WITH NATIONAL MAP ACCURACY STANDARDS  
FOR SALE BY U.S. GEOLOGICAL SURVEY, WASHINGTON, D. C. 20242  
A FOLDER DESCRIBING TOPOGRAPHIC MAPS AND SYMBOLS IS AVAILABLE ON REQUEST



ROAD CLASSIFICATION	
Primary highway, hard surface	Light-duty road, hard or improved surface
Secondary highway, hard surface	Unimproved road
Interstate Route	U. S. Route
	State Route

RECEIVED  
APR 30 2001  
USGS NWU  
HISTORICAL MAP ARCHIVES

CHAPIN, S. C.  
N3407.5-W8115/7.5  
1971  
AMS 4752 III NE-SERIES V846

