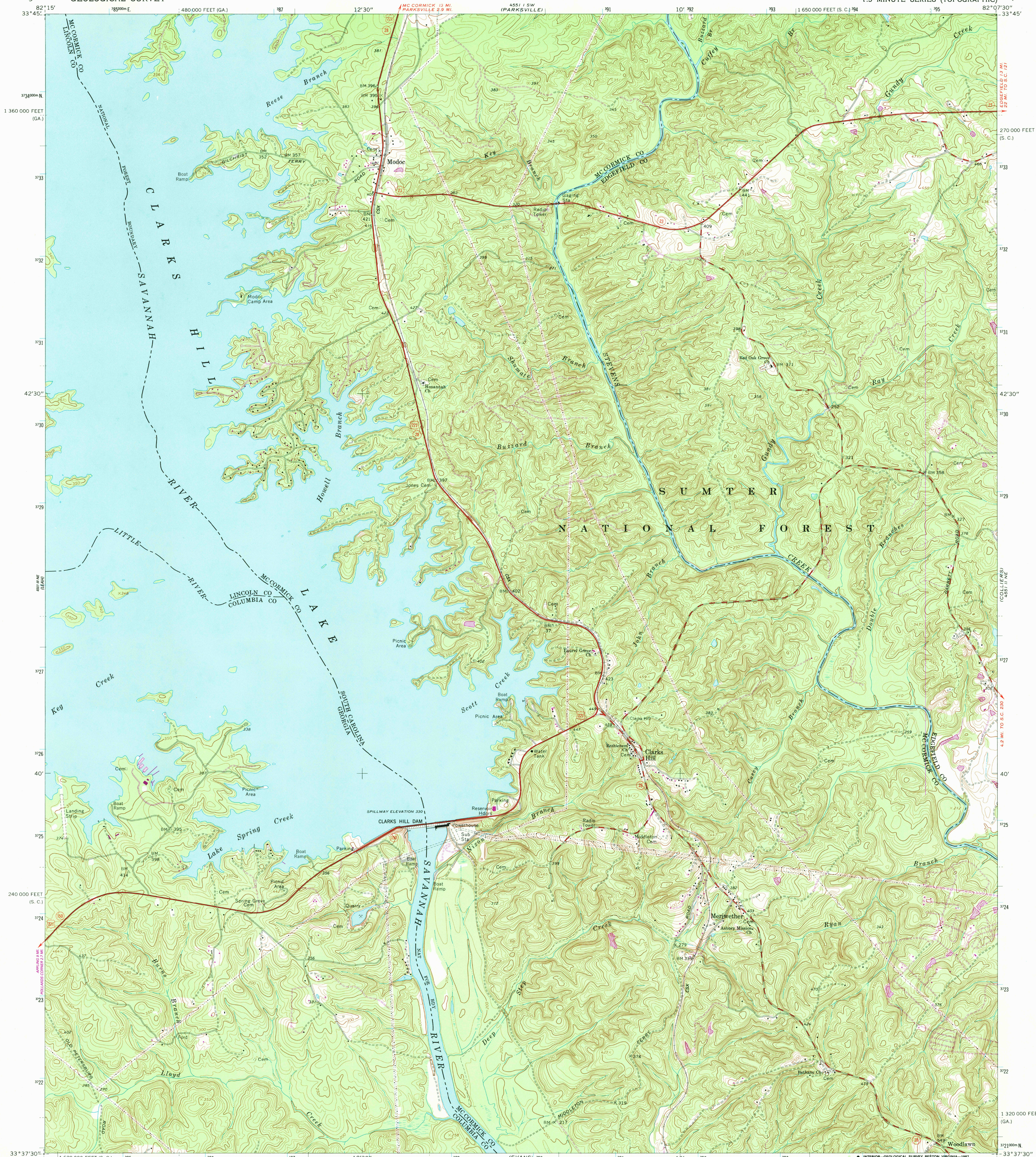


UNITED STATES
DEPARTMENT OF THE INTERIOR
GEOLOGICAL SURVEY

CLARKS HILL QUADRANGLE
SOUTH CAROLINA-GEORGIA
7.5 MINUTE SERIES (TOPOGRAPHIC)



Mapped, edited, and published by the Geological Survey

Control by USGS, NOS/NOAA, USCE, and South Carolina Geodetic Survey

Topography by photogrammetric methods from aerial photographs taken 1962. Field checked 1964

Polyconic projection. 10,000-foot grid ticks based on South Carolina coordinate system, north zone, and Georgia coordinate system, east zone

1000-meter Universal Transverse Mercator grid ticks, zone 17, shown in blue

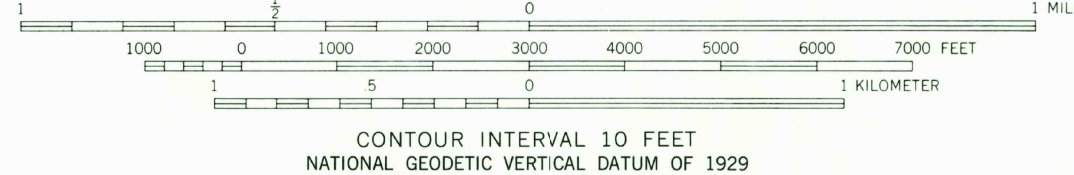
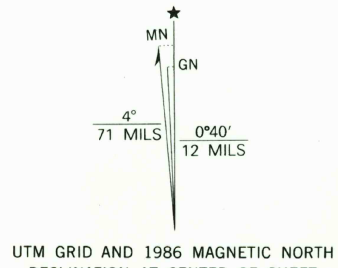
1927 North American Datum

To place on the predicted North American Datum 1983

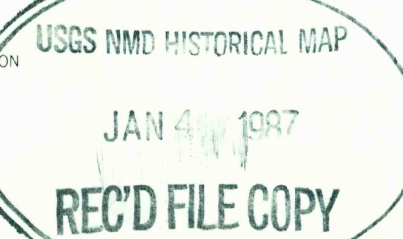
move the projection lines 12 meters south and 14 meters west as shown by dashed corner ticks

There may be private inholdings within the boundaries of the National or State reservations shown on this map

Revisions shown in purple and woodland compiled in cooperation with State of Georgia agencies from aerial photographs taken 1981 and other sources. This information not field checked
Map edited 1986



THIS MAP COMPLIES WITH NATIONAL MAP ACCURACY STANDARDS
FOR SALE BY U.S. GEOLOGICAL SURVEY
DENVER, COLORADO 80225 OR RESTON, VIRGINIA 22092
A FOLDER DESCRIBING TOPOGRAPHIC MAPS AND SYMBOLS IS AVAILABLE ON REQUEST



CLARKS HILL, S. C. - GA.
33082-F2-TF-024

1964
PHOTOREVISED 1986
DMA 4551 II NW-SERIES V846