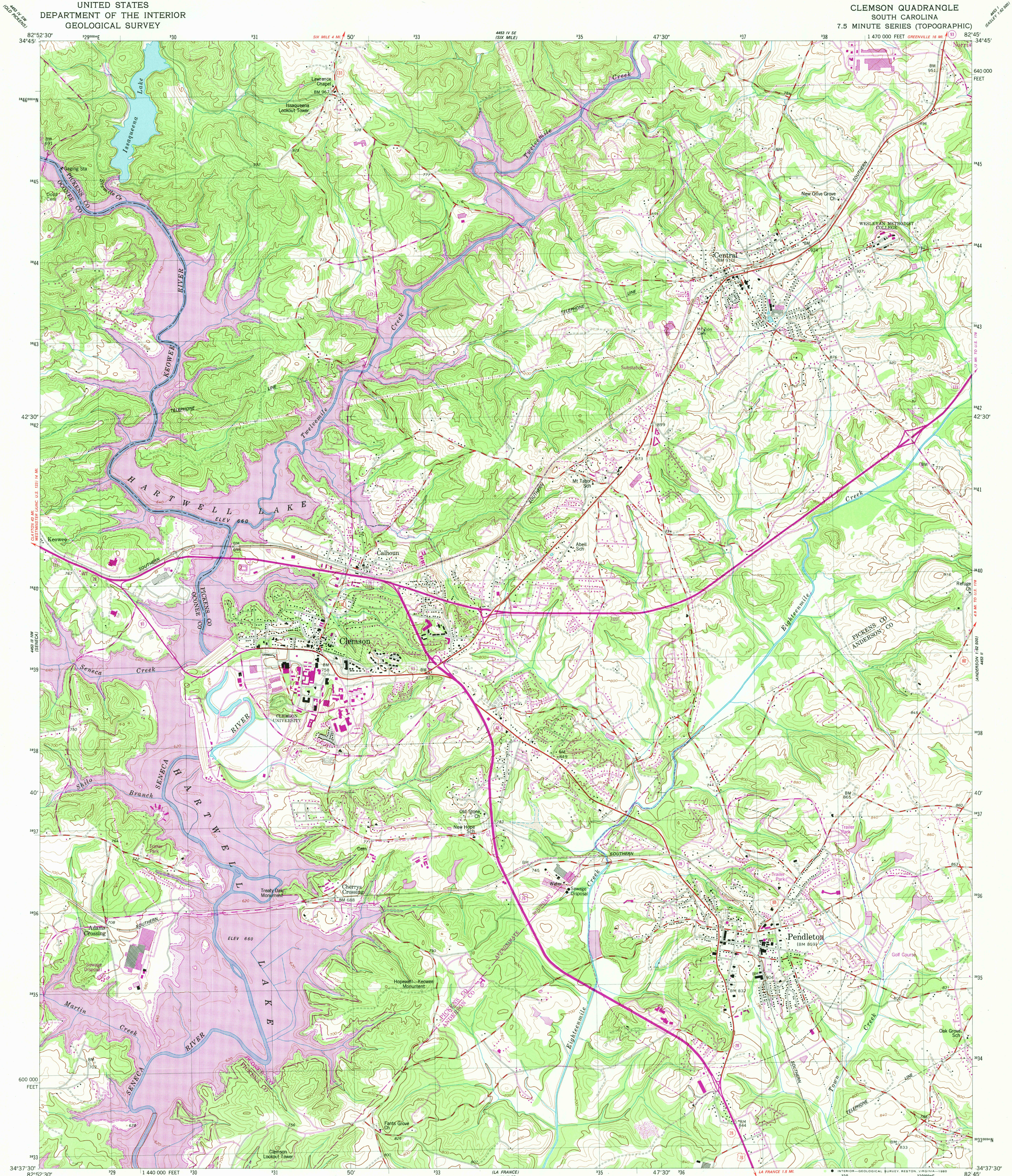
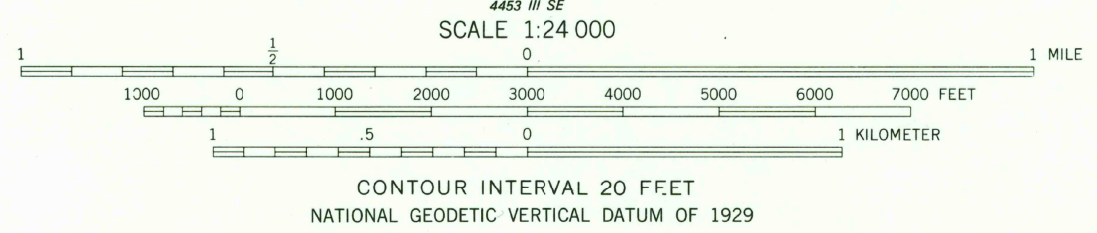
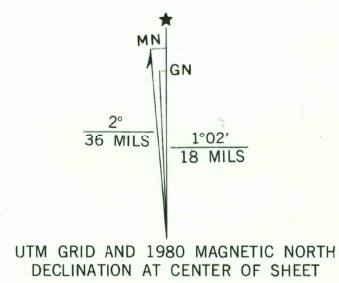


UNITED STATES  
DEPARTMENT OF THE INTERIOR  
GEOLOGICAL SURVEY

CLEMSON QUADRANGLE  
SOUTH CAROLINA  
7.5 MINUTE SERIES (TOPOGRAPHIC)



Mapped, edited, and published by the Geological Survey  
Control by USGS, NOS/NOAA, and S. C. Geodetic Survey  
Topography by photogrammetric methods from aerial photographs  
taken 1947. Field checked 1951  
Polyconic projection  
10,000-foot grid based on South Carolina coordinate system,  
north zone  
1000-meter Universal Transverse Mercator grid,  
zone 17, 1927 North American Datum  
To place on the predicted North American Datum 1983  
move the projection lines 10 meters south and  
12 meters west as shown by dashed corner ticks  
Revisions shown in purple compiled from aerial photographs  
taken 1977 and other source data. This information not  
field checked. Map edited 1980  
Hartwell Lake is subject to controlled inundation of 665 feet



ROAD CLASSIFICATION  
Primary highway, hard surface  
Secondary highway, hard surface  
Unimproved road  
Interstate Route  
U. S. Route  
State Route  
Light-duty road, hard or improved surface  
Unimproved road  
Interior-Geological Survey, Reston, Virginia-1980  
DMA 4453 III NE-SERIES V846  
USGS  
Historical File  
Topographic Division  
CLEMSON, S. C.  
N3437.5-W8245.7.5  
1951  
PHOTOREVISED 1980  
DMA 4453 III NE-SERIES V846

THIS MAP COMPLIES WITH NATIONAL MAP ACCURACY STANDARDS  
FOR SALE BY U. S. GEOLOGICAL SURVEY, RESTON, VIRGINIA 22092  
A FOLDER DESCRIBING TOPOGRAPHIC MAPS AND SYMBOLS IS AVAILABLE ON REQUEST

DEC 10 1980

1920