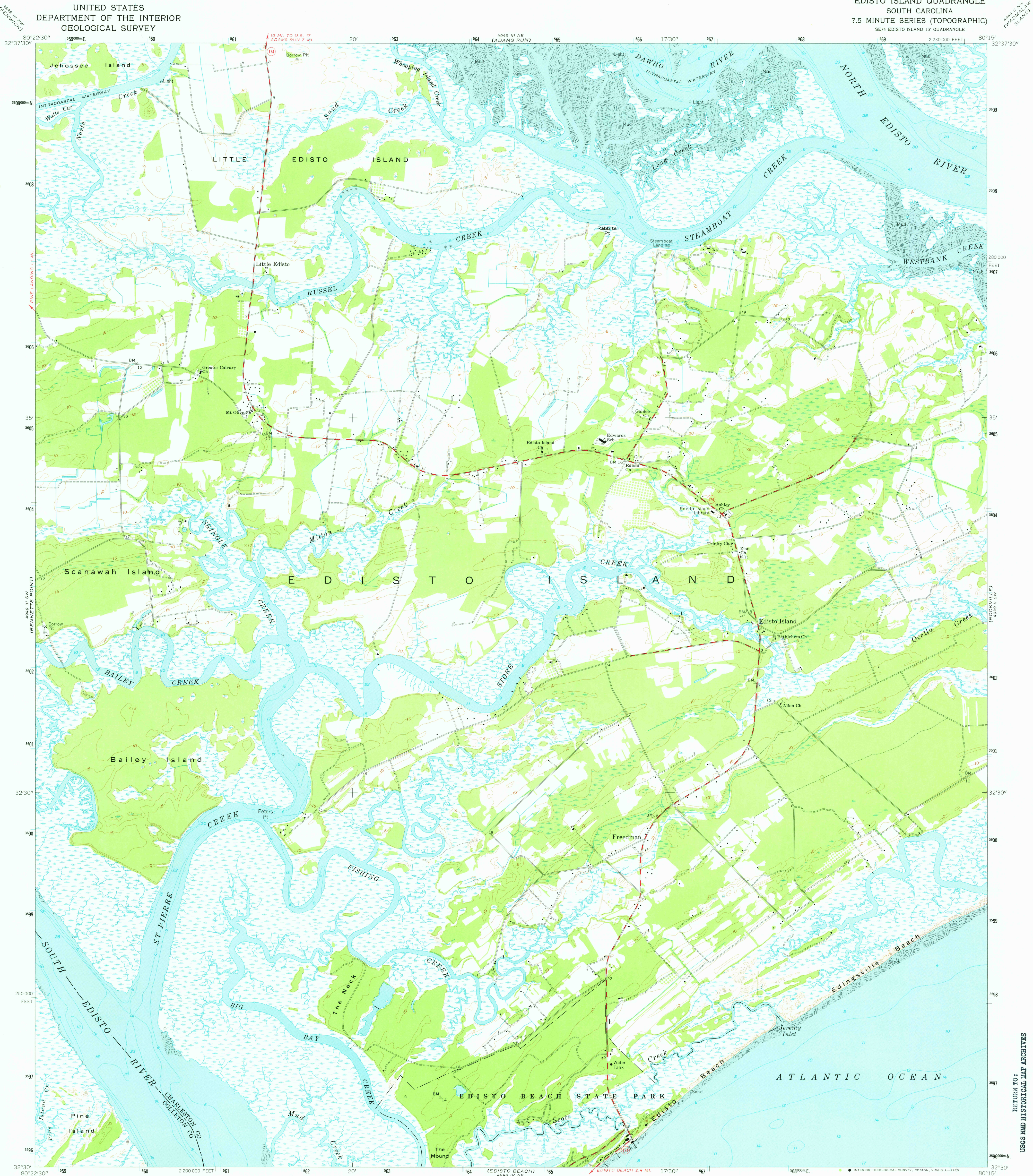
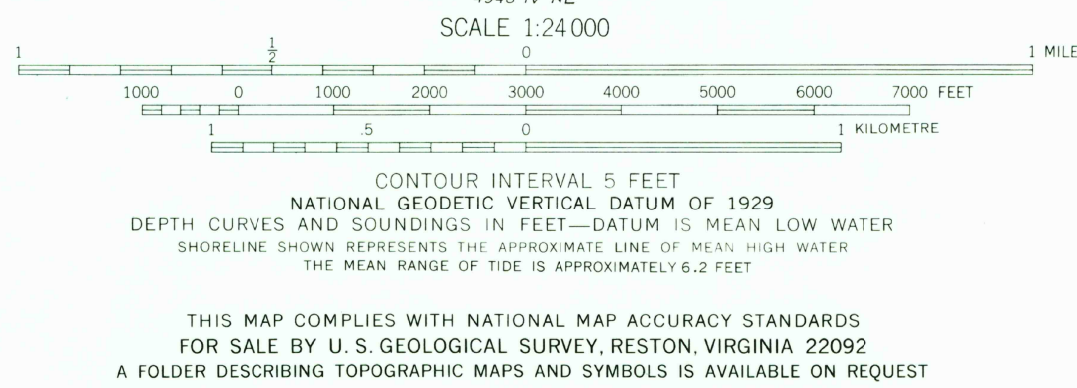
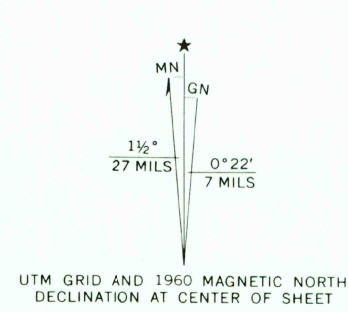


UNITED STATES  
DEPARTMENT OF THE INTERIOR  
GEOLOGICAL SURVEY

EDISTO ISLAND QUADRANGLE  
SOUTH CAROLINA  
7.5 MINUTE SERIES (TOPOGRAPHIC)  
SE/4 EDISTO ISLAND 15' QUADRANGLE



Maped by U.S. Coast and Geodetic Survey  
Edited and published by the Geological Survey  
Control by USGS, USC&GS, and South Carolina Geodetic Survey  
Planimetry by photogrammetric methods from aerial photographs taken  
1952, 1953, and 1959. Topography by planimetric surveys 1953  
Field checked 1960  
Selected hydrographic data compiled from USC&GS Charts 792 (1959)  
and 793 (1960). This information is not intended for navigational purposes  
Polyconic projection. 1927 North American datum  
10,000-foot grid based on South Carolina coordinate system, south zone  
1000-metre Universal Transverse Mercator grid ticks,  
zone 17, shown in blue



ROAD CLASSIFICATION  
Medium-duty ——— Light-duty ———  
Unimproved dirt ———  
State Route ———  
USGS  
HISTORICAL FILE  
TOPOGRAPHIC DIVISION  
EDISTO ISLAND, S. C.  
SE/4 EDISTO ISLAND 15' QUADRANGLE  
N3230—W8015/7.5  
1960  
AMS 4949 III SE—SERIES V846

RETURN TO:  
USGS AND HISTORICAL MAP ARCHIVES

NOV 07 1975