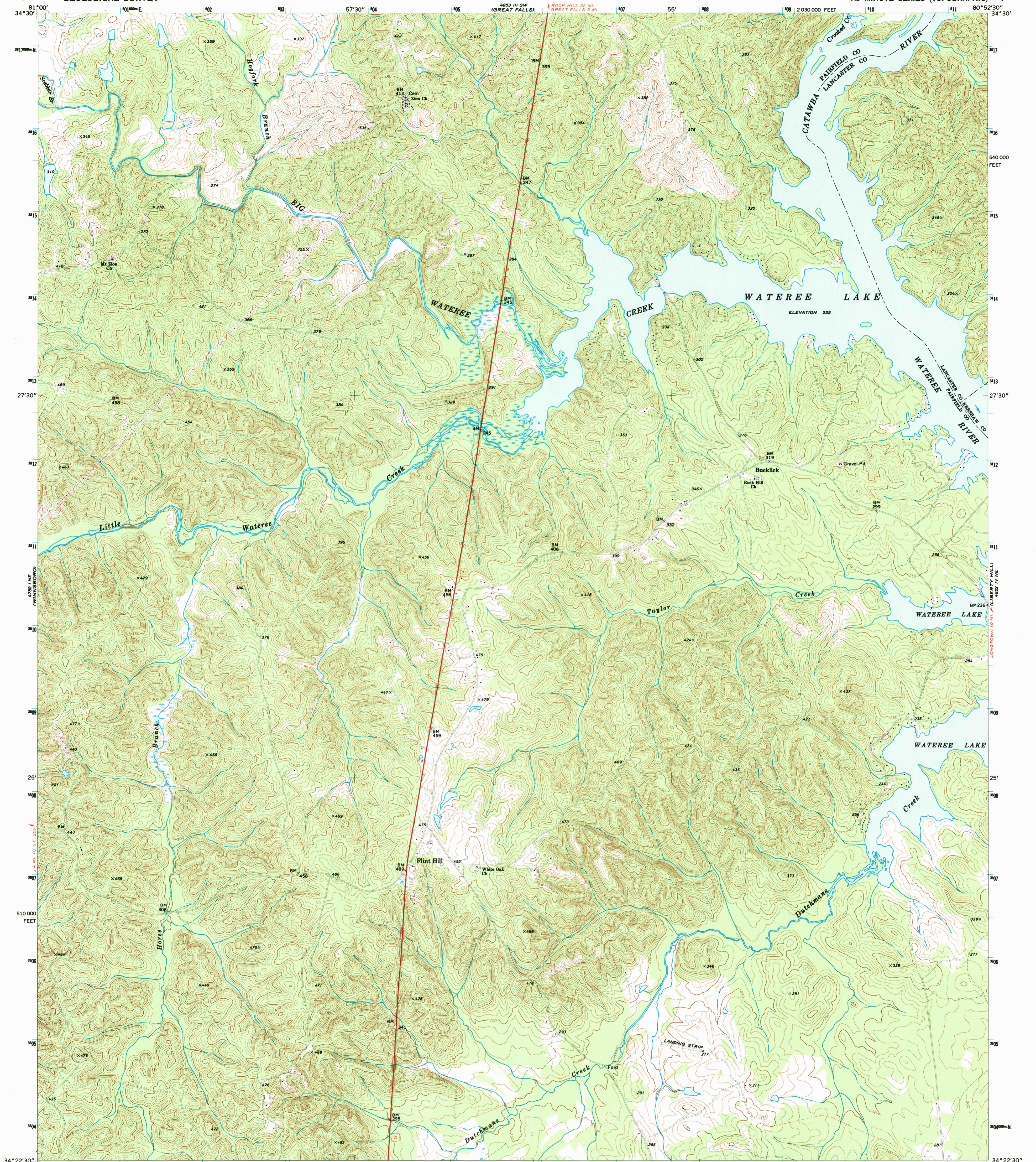


UNITED STATES  
DEPARTMENT OF THE INTERIOR  
GEOLOGICAL SURVEY

FLINT HILL QUADRANGLE  
SOUTH CAROLINA  
7.5 MINUTE SERIES (TOPOGRAPHIC)



Mapped, edited, and published by the Geological Survey

Control by USGS and USC&GS

Topography by photogrammetric methods from aerial photographs taken 1965. Field checked 1971

Polyconic projection. 1927 North American datum  
10,000-foot grid based on South Carolina coordinate system, north zone  
1000-meter Universal Transverse Mercator grid ticks, zone 17, shown in blue

Fine red dashed lines indicate selected fence and field lines where generally visible on aerial photographs. This information is unchecked

To place on the predicted North American Datum 1983, move the projection lines 11 meters south and 17 meters west as shown by dashed corner ticks

