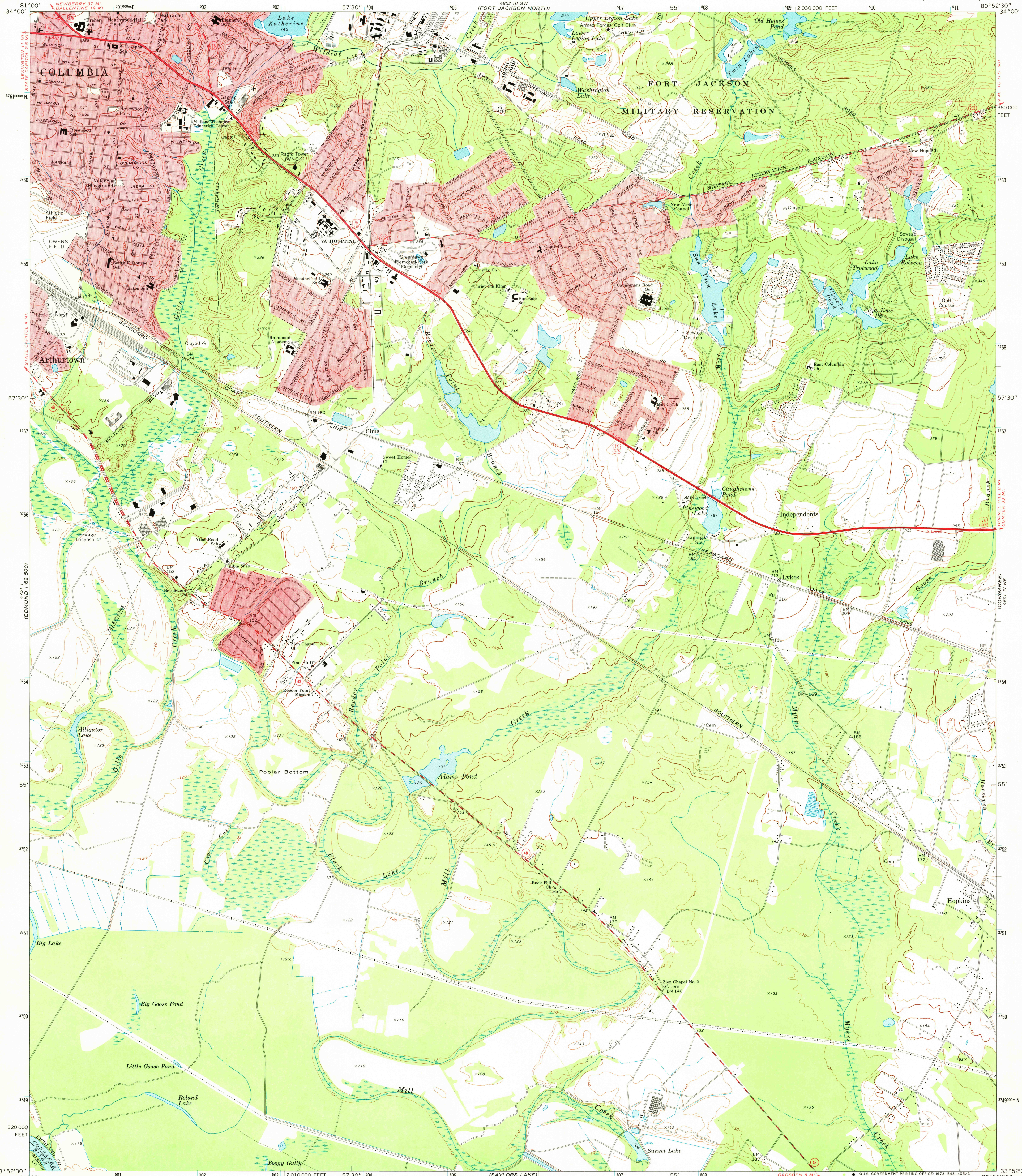
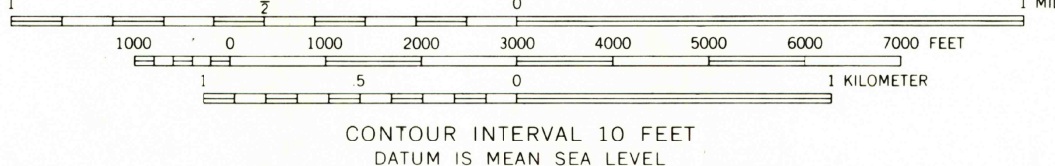
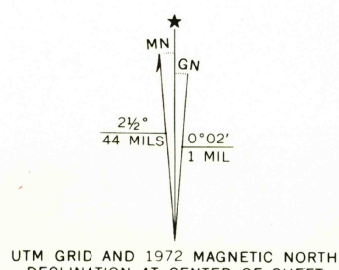


UNITED STATES  
DEPARTMENT OF THE INTERIOR  
GEOLOGICAL SURVEY

FORT JACKSON SOUTH QUADRANGLE  
SOUTH CAROLINA—RICHLAND CO.  
7.5 MINUTE SERIES (TOPOGRAPHIC)



Maped by the Army Map Service  
Edited and published by the Geological Survey  
Control by USGS, USC&GS, USCE, and Tennessee Valley Authority  
Topography by photogrammetric methods from aerial photographs  
taken 1952. Field checked 1953. Revised by the Geological Survey  
from aerial photographs taken 1971. Field checked 1972  
Polyconic projection. 1927 North American datum  
10,000-foot grid based on South Carolina coordinate system,  
north zone  
1000-meter Universal Transverse Mercator grid ticks, zone 17,  
shown in blue  
Fine red dashed lines indicate selected fence and field lines where  
generally visible on aerial photographs. This information is unchecked  
Red tint indicates areas in which only landmark buildings are shown



CONTOUR INTERVAL 10 FEET  
DATUM IS MEAN SEA LEVEL

THIS MAP COMPLIES WITH NATIONAL MAP ACCURACY STANDARDS  
FOR SALE BY U. S. GEOLOGICAL SURVEY, WASHINGTON, D. C. 20242  
A FOLDER DESCRIBING TOPOGRAPHIC MAPS AND SYMBOLS IS AVAILABLE ON REQUEST



ROAD CLASSIFICATION  
Primary highway, hard surface  
Secondary highway, hard surface  
Interstate Route  
Light-duty road, hard or improved surface  
Unimproved road  
U. S. Route  
State Route

FORT JACKSON SOUTH, S. C.  
N3352.5—W8052.5/7.5

1972  
AMS 4851 IV NW—SERIES V846

DEC 8 1973

Hoan  
3000  
SD plan