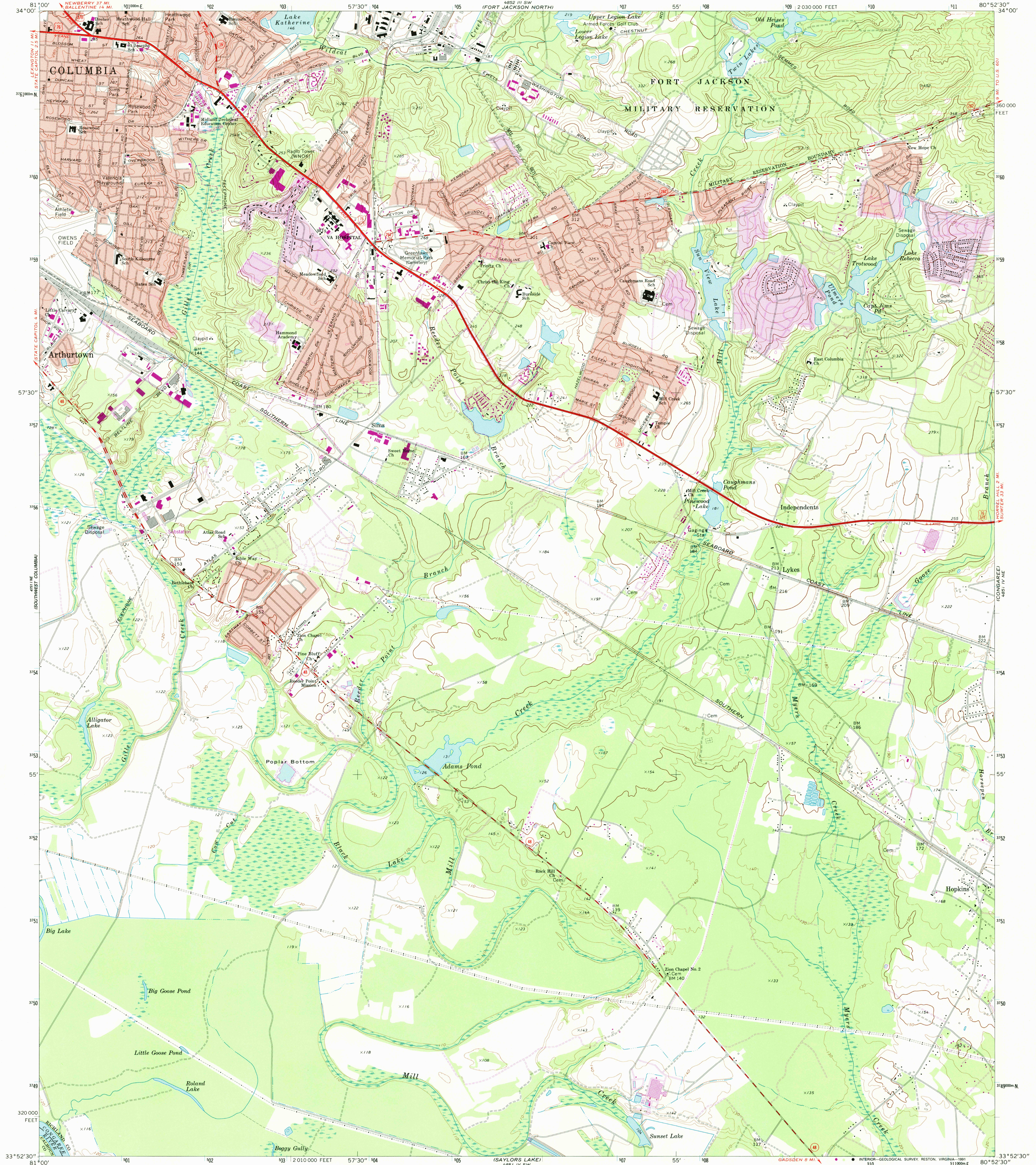


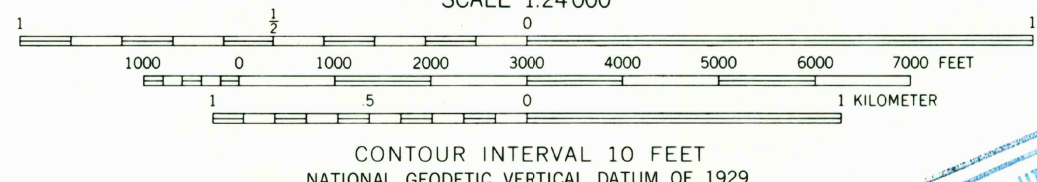
UNITED STATES  
DEPARTMENT OF THE INTERIOR  
GEOLOGICAL SURVEY

FORT JACKSON SOUTH QUADRANGLE  
SOUTH CAROLINA  
7.5 MINUTE SERIES (TOPOGRAPHIC)

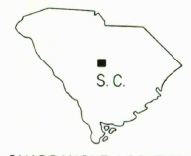


Mapped by the Army Map Service  
Edited and published by the Geological Survey  
Control by USGS, NOS/NOAA, USCE, and Tennessee  
Valley Authority  
Topography by photogrammetric methods from aerial  
photographs taken 1952. Field checked 1953  
Revised by the Geological Survey from aerial photographs  
taken 1971. Field checked 1972  
Polyconic projection. 10,000-foot grid ticks based on South  
Carolina coordinate system, north zone. 1000-meter  
Universal Transverse Mercator grid ticks, zone 17, shown  
in blue. 1927 North American Datum  
The difference between 1927 North American Datum and North American  
Datum of 1983 (NAD 83) for 7.5-minute intersections is given in USGS  
Bulletin 1875. The NAD 83 is shown by dashed corner ticks  
Fine red dashed lines indicate selected fence and field lines where  
generally visible on aerial photographs. This information is unchecked  
Red tint indicates areas in which only landmark buildings are shown  
There may be private inholdings within the boundaries  
of the National or State reservations shown on this map

Revisions shown in purple and woodland compiled by  
the Geological Survey from aerial photographs taken  
1980 and other sources. This information not field  
checked. Map edited 1982  
Purple tint indicates extension of urban areas



USGS AND HISTORICAL  
MAP ARCHIVES  
FEB 05 1992  
REC'D FILE COPY



ROAD CLASSIFICATION  
Primary highway, hard surface  
Secondary highway, hard surface  
Light duty road, hard or improved surface  
Unimproved road  
Interstate Route  
U.S. Route  
State Route

THIS MAP COMPLIES WITH NATIONAL MAP ACCURACY STANDARDS  
FOR SALE BY U.S. GEOLOGICAL SURVEY  
DENVER, COLORADO 80225, OR RESTON, VIRGINIA 22092  
A FOLDER DESCRIBING TOPOGRAPHIC MAPS AND SYMBOLS IS AVAILABLE ON REQUEST

FORT JACKSON SOUTH, S. C.  
33080H8-TF-024  
PHOTOINSPECTED 1987  
1972  
PHOTOREVISED 1982  
DMA 4851 IV NW-SERIES V846