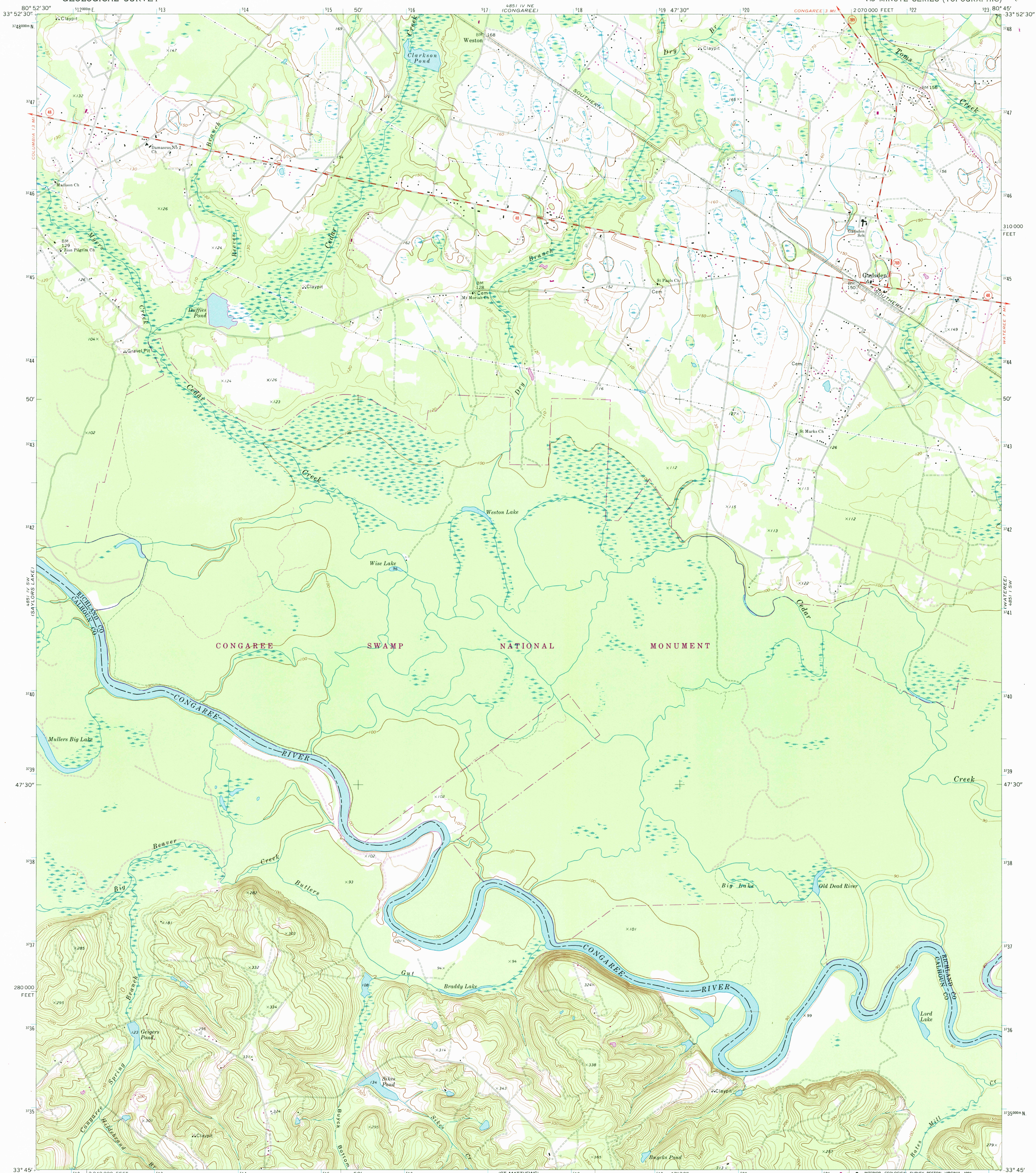


FROM JACKSON
4881 I NW
(EASTOVER)

4881 I NW
(EASTOVER)

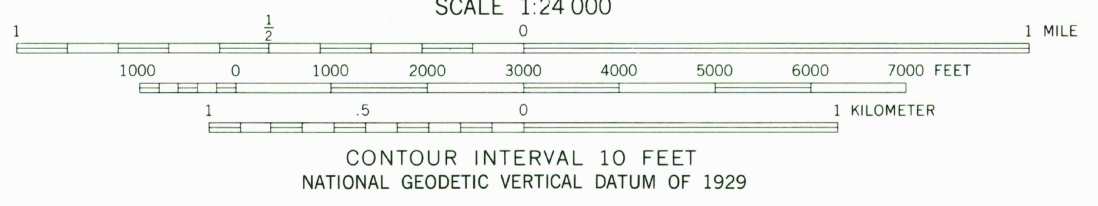
UNITED STATES
DEPARTMENT OF THE INTERIOR
GEOLOGICAL SURVEY

GADSDEN QUADRANGLE
SOUTH CAROLINA
7.5 MINUTE SERIES (TOPOGRAPHIC)



Mapped by the Army Map Service
Edited and published by the Geological Survey
Control by USGS, NOS/NOAA, USCE, and Tennessee Valley Authority
Topography by photogrammetric methods from aerial photographs
taken 1952. Field checked 1953. Revised by the Geological Survey
from aerial photographs taken 1971. Field checked 1972.
Polyconic projection. 10,000-foot grid ticks based on South Carolina
coordinate system, north zone. 1000-meter Universal Transverse
Mercator grid ticks, zone 17, shown in blue. 1927 North
American Datum.
The difference between 1927 North American Datum and North
American Datum of 1983 (NAD 83) for 7.5-minute intersections
is given in USGS Bulletin 1875. The NAD 83 is shown by
dashed corner ticks.
Short dashed blue lines indicate elliptical bay outlines
visible on aerial photographs.
There may be private inholdings within the boundaries
of the National or State reservations shown on this map

Revisions shown in purple and woodland compiled by
the Geological Survey from aerial photographs taken
1980 and other sources. This information not field
checked. Map edited 1982



ROAD CLASSIFICATION

Primary highway, hard surface	Light-duty road, hard or improved surface
Secondary highway, hard surface	Unimproved road

Interstate Route U. S. Route State Route

USGS AND HISTORICAL
MAP ARCHIVES
DEC 12 1991
REC'D FILE COPY

GADSDEN, S. C.
33080-G7-TF-024
PHOTOINSPECTED 1987
1972
PHOTOREVISED 1982
DMA 4851 IV SE - SERIES V846

FROM JACKSON
4881 I NW
(EASTOVER)