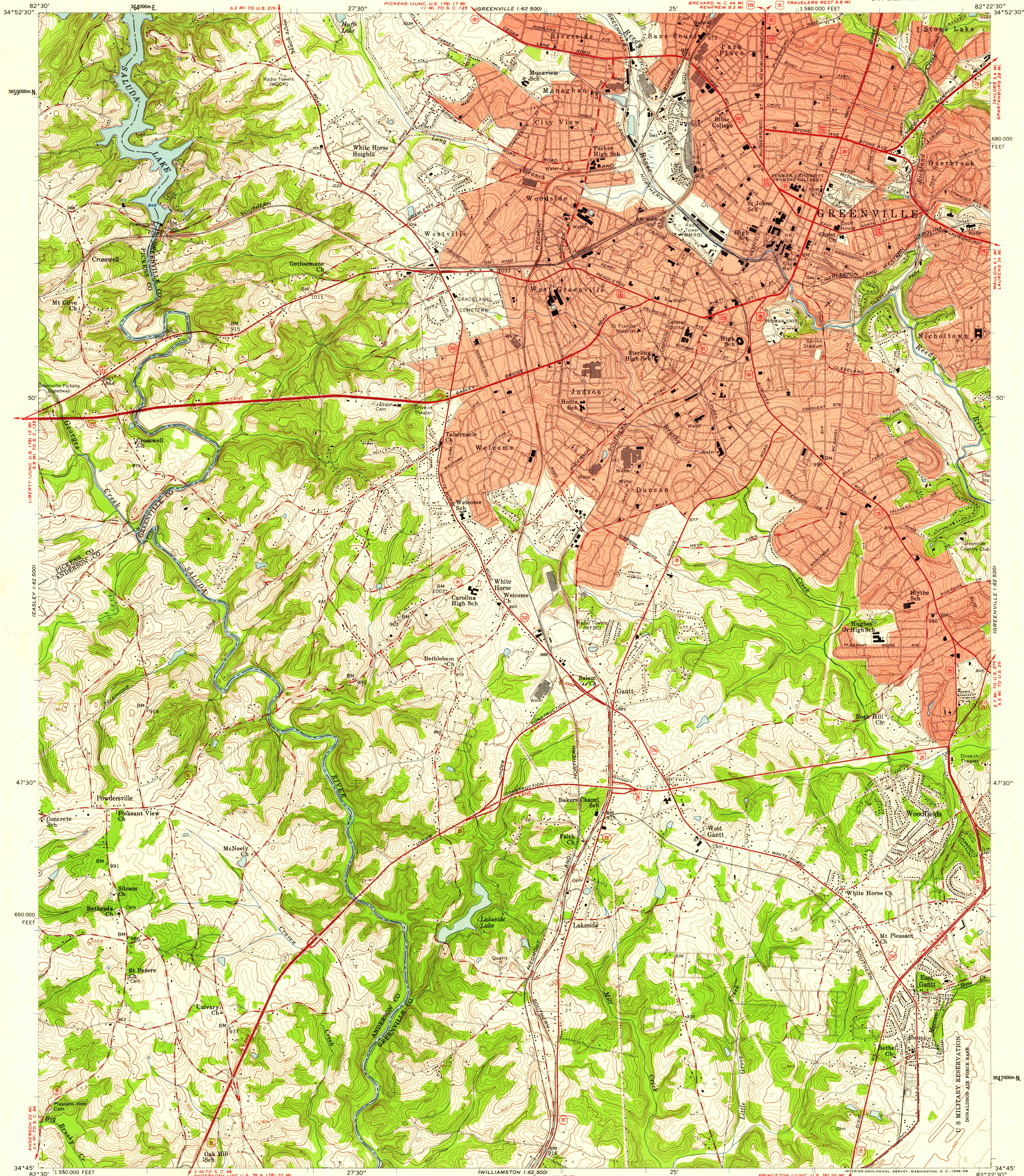


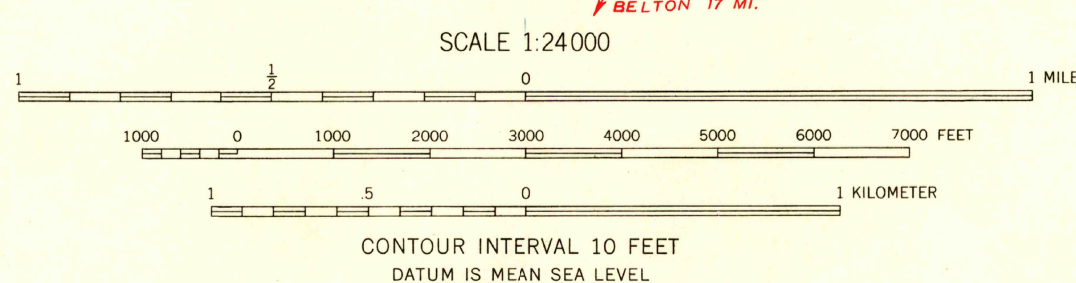
UNITED STATES
DEPARTMENT OF THE INTERIOR
GEOLOGICAL SURVEY

GREENVILLE QUADRANGLE
SOUTH CAROLINA
7.5 MINUTE SERIES (TOPOGRAPHIC)



Maped, edited, and published by the Geological Survey
Control by USGS, USC&GS, and South Carolina Geodetic Survey
Topography from aerial photographs by Kesh plotter
Aerial photographs taken 1956. Field check 1957
Polyconic projection, 1927 North American datum
10,000-foot grid based on South Carolina coordinate system,
north zone
1000-meter Universal Transverse Mercator grid ticks,
zone 17, shown in blue
Fine red dashed lines indicate selected fence and field lines
visible on aerial photographs. This information is unchecked
Red tint indicates areas in which only
landmark buildings are shown
Unchecked elevations are shown in brown

APPROXIMATE MEAN
DECLINATION, 1957



THIS MAP COMPLIES WITH NATIONAL MAP ACCURACY STANDARDS
FOR SALE BY U. S. GEOLOGICAL SURVEY, WASHINGTON 25, D. C.
A FOLDER DESCRIBING TOPOGRAPHIC MAPS AND SYMBOLS IS AVAILABLE ON REQUEST



QUADRANGLE LOCATION

U.S.G.S.
FILE COPY
TOPOGRAPHIC DIVISION

ROAD CLASSIFICATION
Heavy-duty ——— Light-duty ———
Medium-duty ——— Unimproved dirt ———
U. S. Route ——— State Route ———

GREENVILLE, S. C.
SW/4 GREENVILLE 15' QUADRANGLE
N3445-W8222.5/7.5

1957

SEP 11 1958
3860