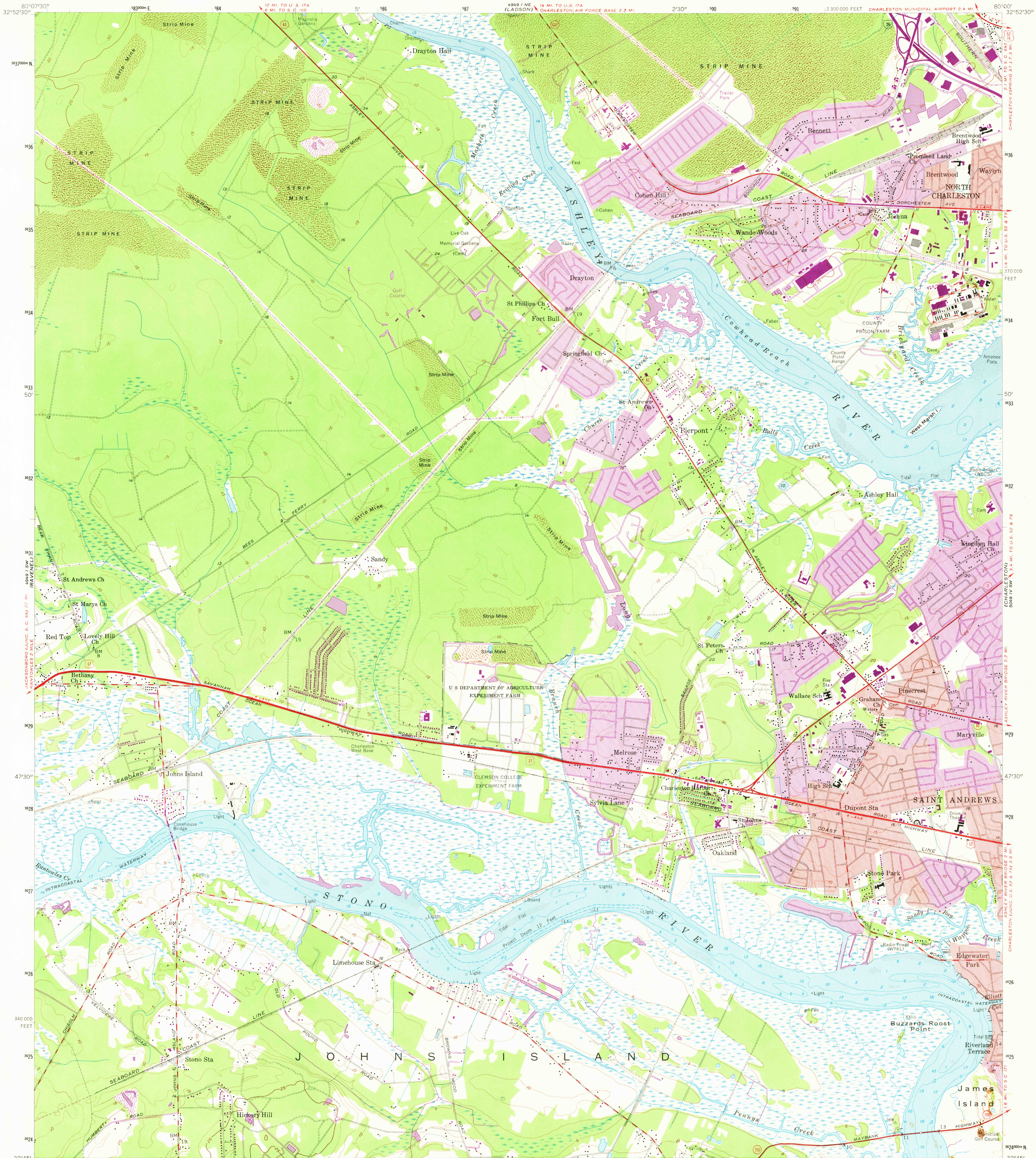


UNITED STATES
DEPARTMENT OF THE INTERIOR
GEOLOGICAL SURVEY

JOHNS ISLAND QUADRANGLE
SOUTH CAROLINA—CHARLESTON CO.
7.5 MINUTE SERIES (TOPOGRAPHIC)



Mapped, edited, and published by the Geological Survey
Control by USGS, USCGS, USCE, and South Carolina Geodetic Survey
Culture and drainage in part compiled from aerial photographs
taken 1957. Topography by planetable surveys 1958
Hydrography compiled from USC&GS charts 792 (1957) and 1239 (1958)
Polyconic projection. 1927 North American datum
10,000-foot grid based on South Carolina coordinate system,
south zone
1000-meter Universal Transverse Mercator grid ticks,
zone 17, shown in blue
Red tint indicates areas in which only
landmark buildings are shown

UTM GRID AND 1971 MAGNETIC NORTH
DECLINATION AT CENTER OF SHEET

SCALE 1:24 000
CONTOUR INTERVAL 5 FEET
DATUM IS MEAN SEA LEVEL
DEPTH CURVES AND SOUNDINGS IN FEET—DATUM IS MEAN LOW WATER
SHORELINE SHOWN REPRESENTS THE APPROXIMATE LINE OF MEAN HIGH WATER
THE MEAN RANGE OF TIDE IS APPROXIMATELY 5.2 FEET

THIS MAP COMPLIES WITH NATIONAL MAP ACCURACY STANDARDS
FOR SALE BY U. S. GEOLOGICAL SURVEY, WASHINGTON, D. C. 20242
A FOLDER DESCRIBING TOPOGRAPHIC MAPS AND SYMBOLS IS AVAILABLE ON REQUEST

ROAD CLASSIFICATION
Heavy-duty ——— Light-duty ———
Medium-duty ——— Unimproved dirt ———
U. S. Route ——— State Route ———
Interstate Route ———
JOHNS ISLAND, S. C.
N 3245—W 8000/7.5
1958
PHOTOREVISED 1971
AMS 4949 I SE—SERIES V846

Revisions shown in purple compiled from aerial
photographs taken 1971. This information not field checked
Purple tint indicates extension of urban areas