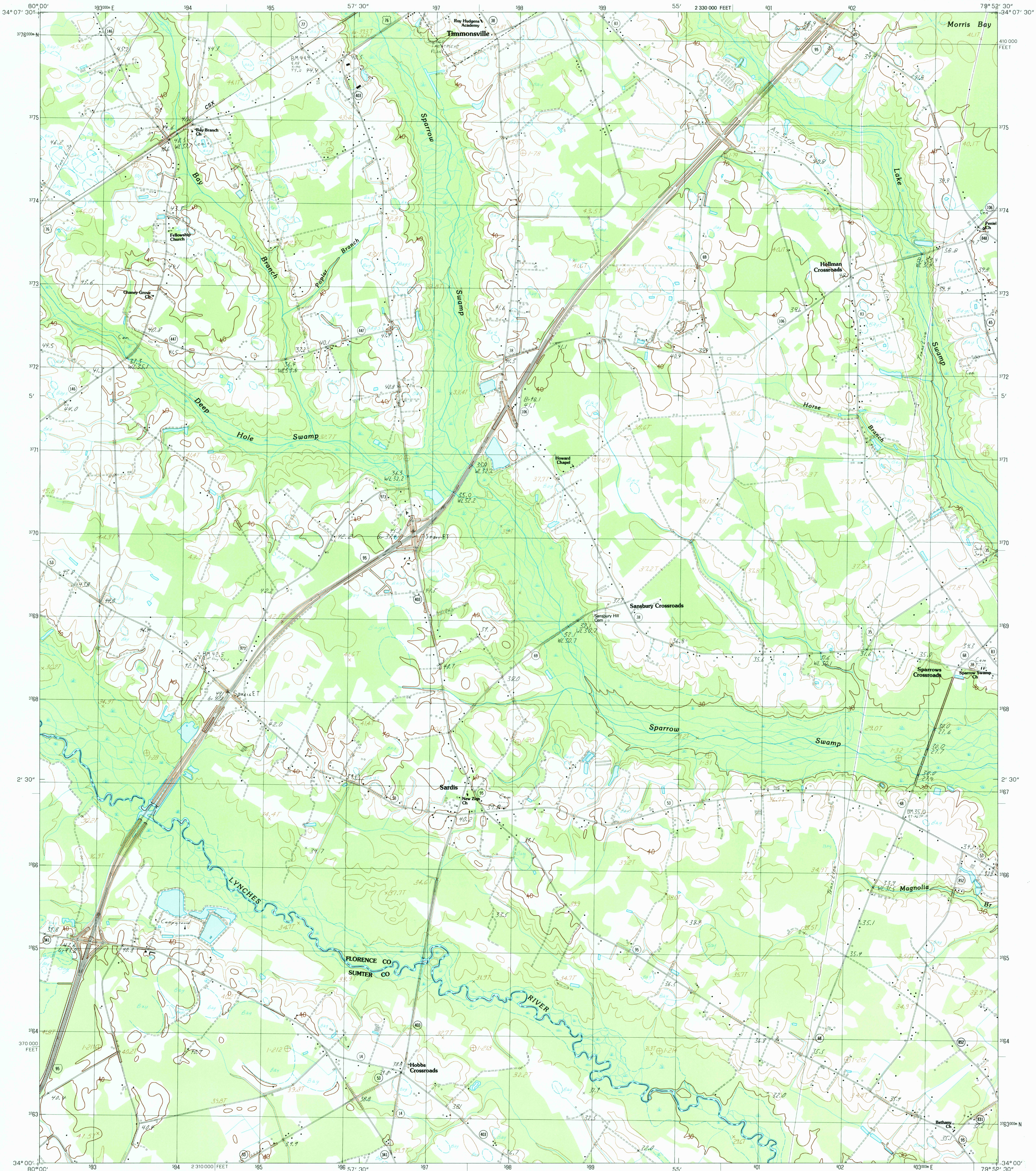


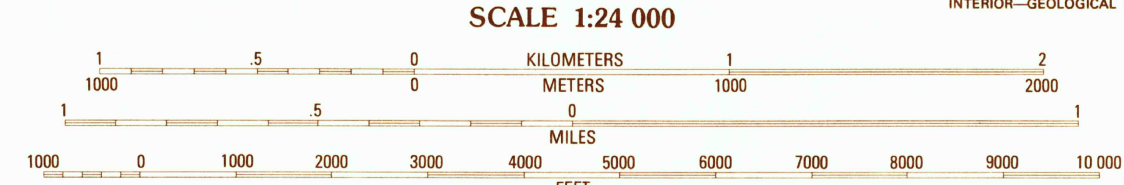
UNITED STATES  
DEPARTMENT OF THE INTERIOR  
GEOLOGICAL SURVEY

SARDIS QUADRANGLE  
SOUTH CAROLINA  
7.5 MINUTE SERIES (TOPOGRAPHIC)



PRODUCED BY THE UNITED STATES GEOLOGICAL SURVEY  
CONTROL BY: USGS AND NOS/NOAA  
COMPILED FROM AERIAL PHOTOGRAPHS TAKEN: 1977  
FIELD CHECKED: 1978. MAP EDITED: 1986  
PROJECTION: UNIVERSAL TRANSVERSE MERCATOR  
GRID: 1000-METER UNIVERSAL TRANSVERSE MERCATOR  
ZONE 17  
10,000-FOOT STATE GRID TICS: SOUTH CAROLINA, NORTH ZONE  
UTM GRID DECLINATION: 0°36' EAST  
1986 MAGNETIC NORTH DECLINATION: 0°06' WEST  
VERTICAL DATUM: NATIONAL GEODETIC VERTICAL DATUM OF 1929  
HORIZONTAL DATUM: 1927 NORTH AMERICAN DATUM  
To place on the predicted North American Datum of 1983,  
move the projection lines as shown by dashed corner ticks  
(13 meters south and 20 meters west).  
There may be private inholdings within the boundaries of any  
Federal and State reservations shown on this map

**PROVISIONAL MAP**  
Produced from original  
manuscript drawings. Infor-  
mation shown as of date of  
field check.



To convert meters to feet multiply by 3.2808  
To convert feet to meters multiply by .3048

THIS MAP COMPLIES WITH NATIONAL MAP ACCURACY STANDARDS  
FOR SALE BY U. S. GEOLOGICAL SURVEY, DENVER, COLORADO 80225, OR RESTON, VIRGINIA 22092



1	2	3	1 Lamar
			2 Timmonsville
			3 Florence West
4	5		4 Lynchburg
			5 Ellingham
			6 Turbeville
6	7	8	7 Olanta
			8 Mills Bay

ADJOINING 7.5 QUADRANGLE NAMES

CONTOURS AND ELEVATIONS IN METERS

ROAD LEGEND

Improved Road  
Unimproved Road  
Trail

Interstate Route U. S. Route State Route

**SARDIS, SOUTH CAROLINA**  
PROVISIONAL EDITION 1986

34079-A8-TM-024

SEP 1987  
PROBABLE COPY  
USGS MAP INFORMATION MAP