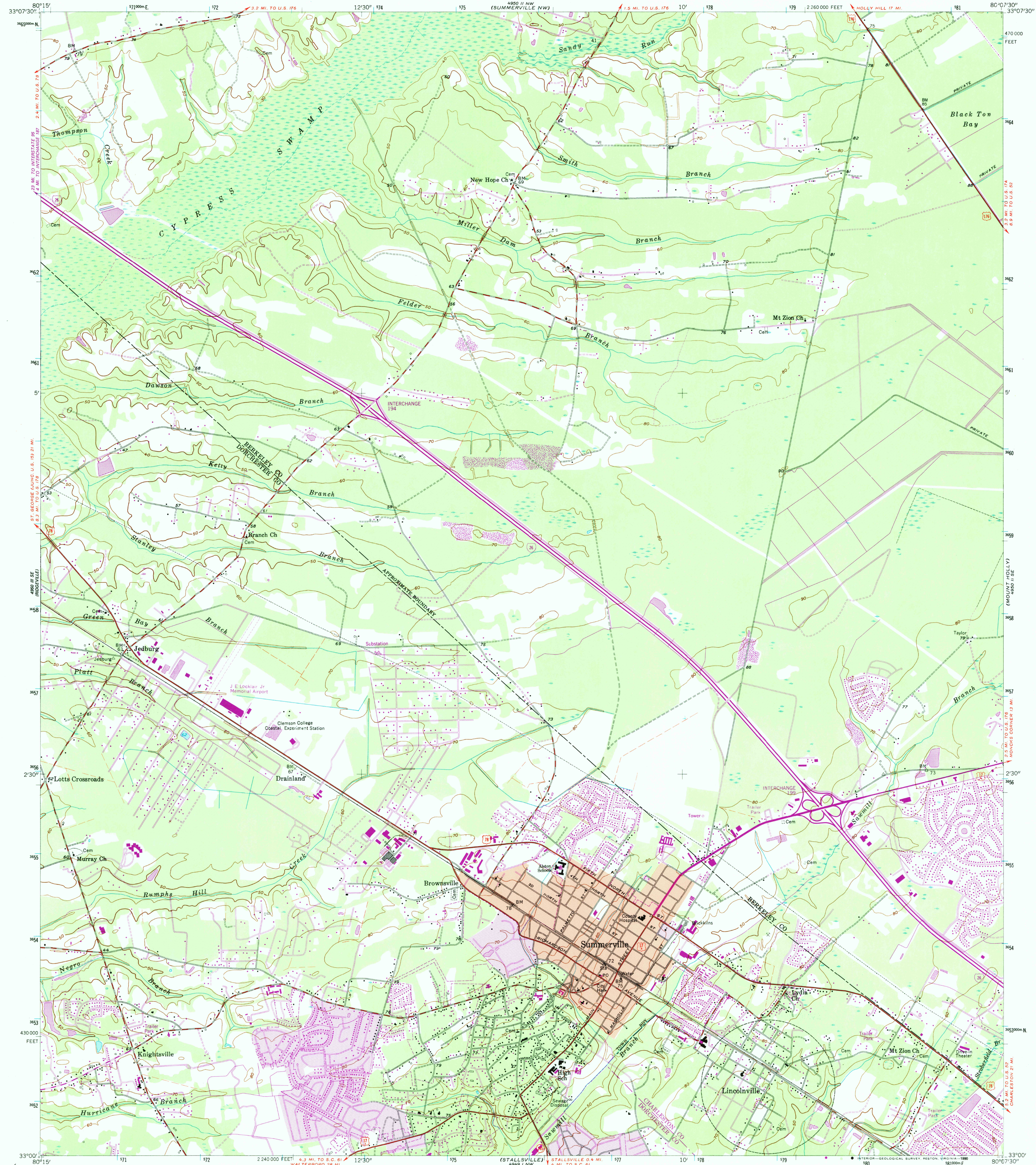
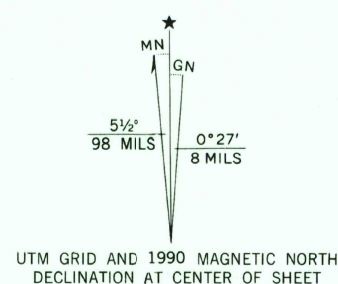


UNITED STATES  
DEPARTMENT OF THE INTERIOR  
GEOLOGICAL SURVEY

SUMMERVILLE QUADRANGLE  
SOUTH CAROLINA  
7.5 MINUTE SERIES (TOPOGRAPHIC)



Mapped, edited, and edited by the Geological Survey  
Control by USGS, NOS/NOAA, and South Carolina Geodetic Survey  
Culture and drainage in part compiled from aerial photographs  
taken 1955. Topography by planetable surveys 1957-1958  
Polyconic projection. 1927 North American Datum  
10,000-foot grid ticks based on South Carolina coordinate system,  
south zone  
1000-meter Universal Transverse Mercator grid ticks,  
zone 17, shown in blue  
To place on the predicted North American Datum 1983  
move the projection lines 15 meters south  
and 18 meters west as shown by dashed corner ticks  
Red tint indicates area in which only landmark buildings are shown  
Fine red dashed lines indicate selected fence and field lines where  
generally visible on aerial photographs. This information is unchecked



SCALE 1:24,000  
CONTOUR INTERVAL 10 FEET  
NATIONAL GEODETIC VERTICAL DATUM OF 1929  
THIS MAP COMPLIES WITH NATIONAL MAP ACCURACY STANDARDS  
FOR SALE BY U.S. GEOLOGICAL SURVEY  
DENVER, COLORADO 80225 OR RESTON, VIRGINIA 22092  
A FOLDER DESCRIBING TOPOGRAPHIC MAPS AND SYMBOLS IS AVAILABLE ON REQUEST

ROAD CLASSIFICATION  
Heavy-duty Light-duty  
Medium-duty Unimproved dirt  
U.S. Route State Route  
Interstate Route  
SUMMERVILLE, S.C.  
33080-A2-TF-024  
1958  
PHOTOREVISED 1990  
DMA 4950 II SW - SERIES V846