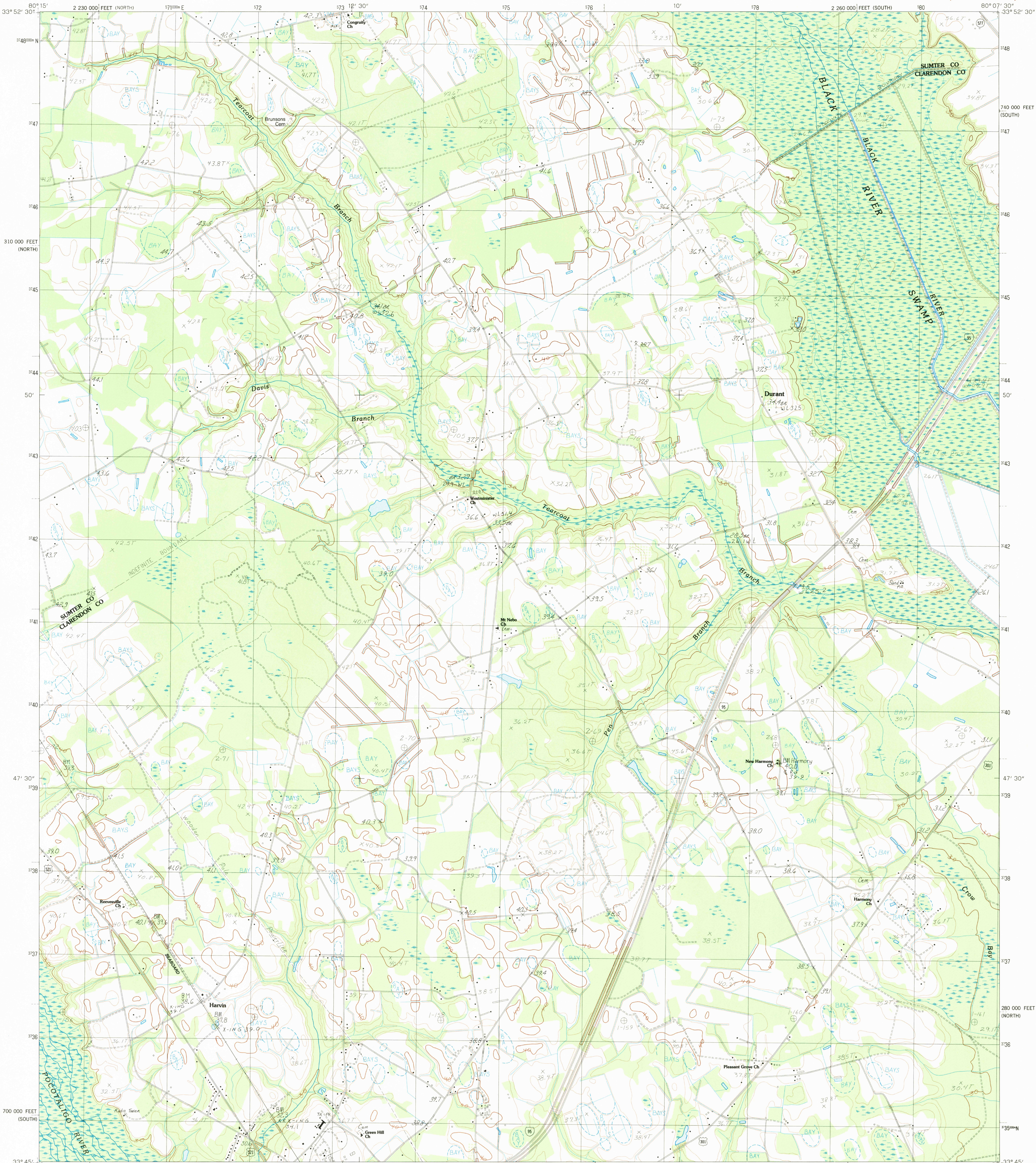


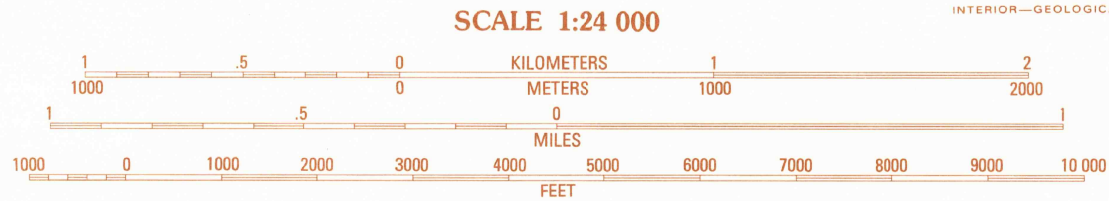
UNITED STATES
DEPARTMENT OF THE INTERIOR
GEOLOGICAL SURVEY

TEARCOAT BRANCH QUADRANGLE
SOUTH CAROLINA
7.5 MINUTE SERIES (TOPOGRAPHIC)



PRODUCED BY THE UNITED STATES GEOLOGICAL SURVEY
CONTROL BY USGS AND NOS/NOAA
COMPILED FROM AERIAL PHOTOGRAPHS TAKEN 1978
FIELD CHECKED 1978 MAP EDITED 1983
PROJECTION LAMBERT CONFORMAL CONIC
GRID: 1000-METER UNIVERSAL TRANSVERSE MERCATOR
SOUTH CAROLINA
10,000-FOOT STATE GRID TICS
UTM GRID DECLINATION 027° EAST
1983 MAGNETIC NORTH DECLINATION 5° WEST
VERTICAL DATUM NATIONAL GEODETIC VERTICAL DATUM OF 1989
HORIZONTAL DATUM 1927 NORTH AMERICAN DATUM
To place on the predicted North American Datum of 1983, move the projection lines as shown by dashed corner ticks (13 meters south and 19 meters west)
There may be private inholdings within the boundaries of any Federal and State Reservations shown on this map

PROVISIONAL MAP
Produced from original
manuscript drawings. Information
shown as of date of
field check



THIS MAP COMPLIES WITH NATIONAL MAP ACCURACY STANDARDS
FOR SALE BY U. S. GEOLOGICAL SURVEY, RESTON, VIRGINIA 22092

QUADRANGLE LOCATION

1	2	3	1	Sumter East
2			2	Mayesville
3			3	Turbeville
4			4	Brogdon
5			5	Sardonia
6			6	Paxville
7			7	Manning
8			8	Foreston

ADJOINING 7.5' QUADRANGLE NAMES

CONTOURS AND ELEVATIONS IN METERS

ROAD LEGEND

Improved Road
Unimproved Road
Trail
Interstate Route
U.S. Route
State Route

TEARCOAT BRANCH, S. C.
PROVISIONAL EDITION 1983

33080-G2-TM-024

RETURN TO:
USGS AND HISTORICAL MAP ARCHIVES

MAR 2 1984