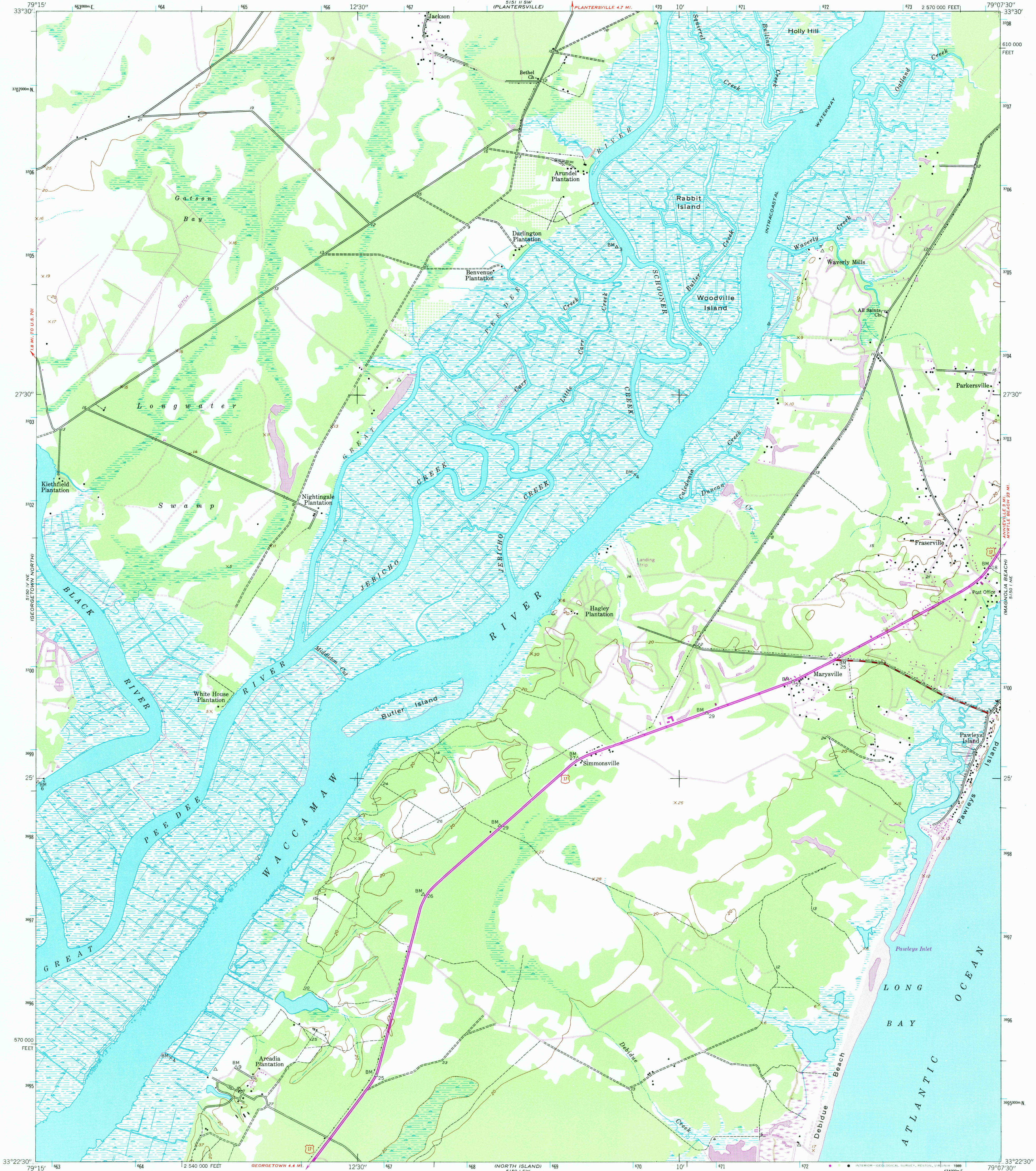
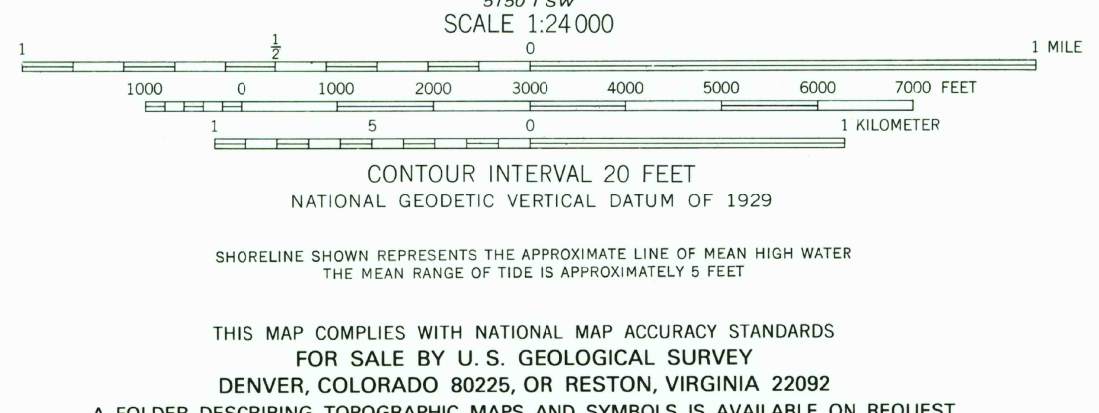
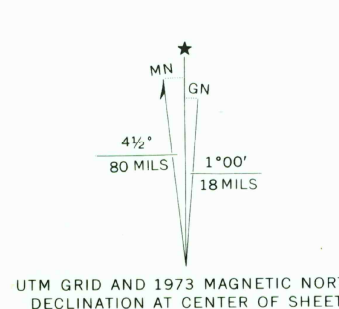


UNITED STATES
DEPARTMENT OF THE INTERIOR
GEOLOGICAL SURVEY

WAVERLY MILLS QUADRANGLE
SOUTH CAROLINA—GEORGETOWN CO.
7.5 MINUTE SERIES (TOPOGRAPHIC)



Maped by the Army Map Service
Published for civil use by the Geological Survey
Control by USC&GS
Topography by photogrammetric methods from aerial photographs
taken 1942 and planetable surveys 1942
Polyconic projection 1927 North American datum
10,000-foot grid based on South Carolina coordinate system,
south zone
1000-meter Universal Transverse Mercator grid ticks,
zone 17, shown in blue
Revisions shown in purple compiled by the Geological Survey from
aerial photographs taken 1973. This information not field checked
To place on the predicted North American Datum 1983
move the projection lines 15 meters south and
22 meters west as shown by dashed corner ticks



ROAD CLASSIFICATION

Heavy-duty ——— Light-duty ———
Medium-duty ——— Unimproved dirt ———
U. S. Route ——— State Route ———

QUADRANGLE LOCATION

USGS NMD HISTORICAL MAP

APR 23 1969

REC'D FILE COPY

WAVERLY MILLS, S. C.
33079-D2-TF-024

1942
PHOTOREVISED 1973
DMA 5150 1 NW—SERIES V846