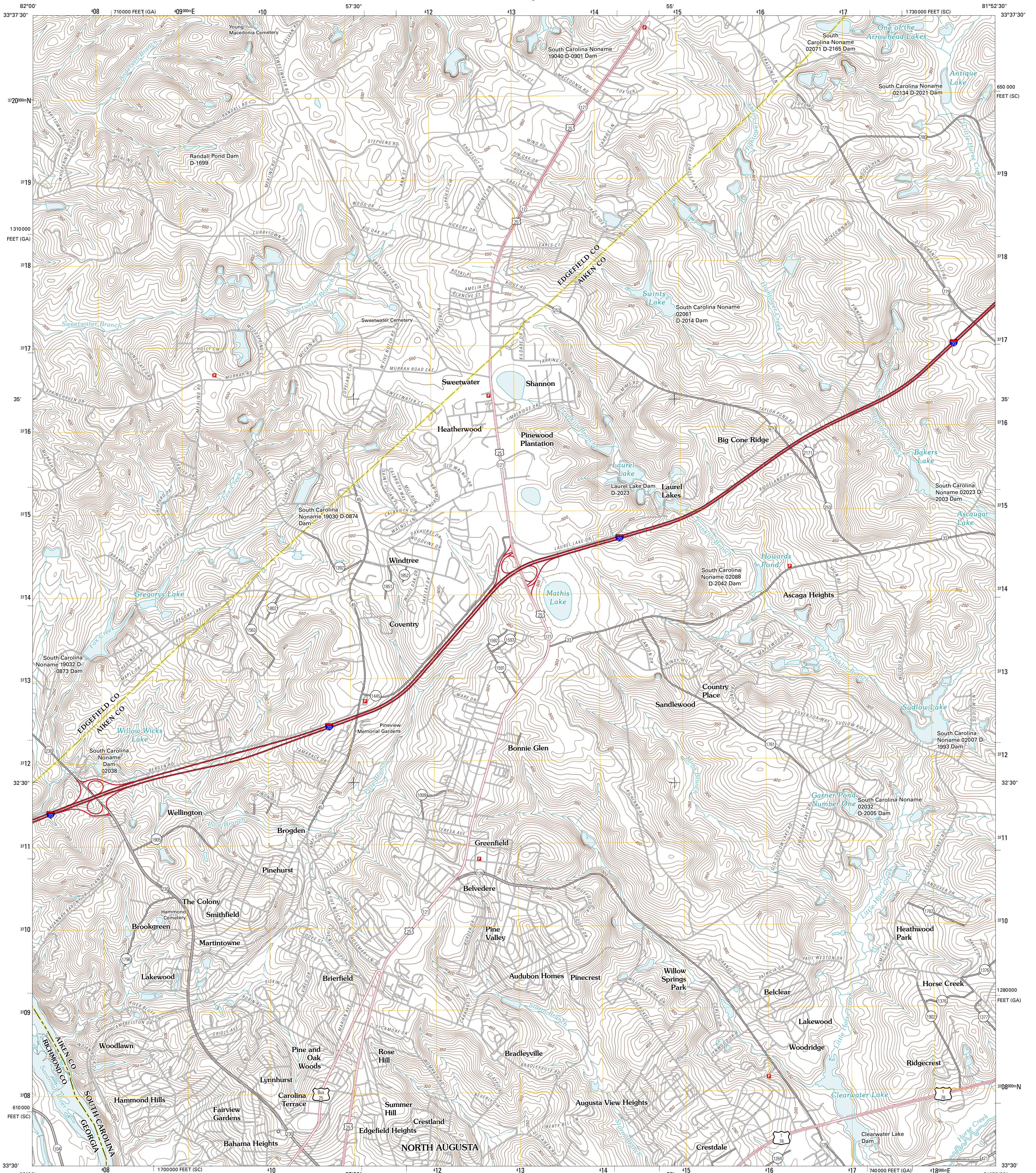




U.S. DEPARTMENT OF THE INTERIOR
U. S. GEOLOGICAL SURVEY

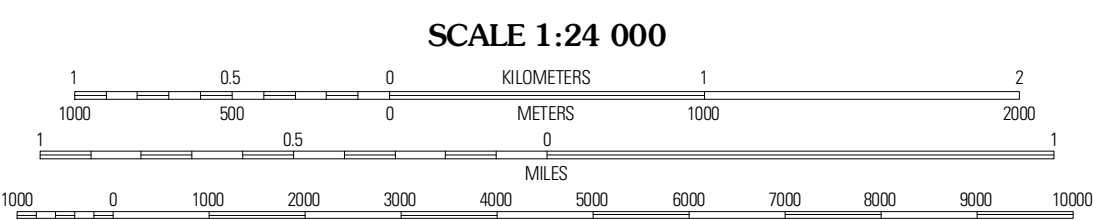
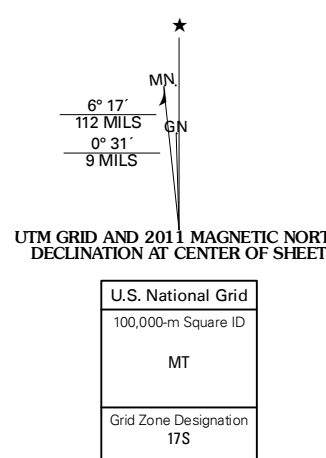


NORTH AUGUSTA QUADRANGLE
SOUTH CAROLINA-GEORGIA
7.5-MINUTE SERIES

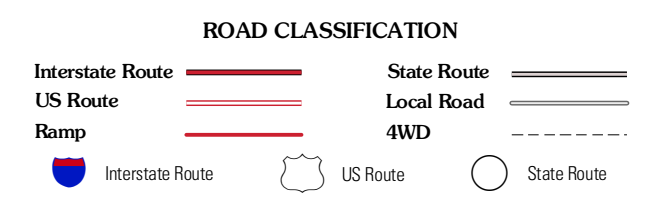


Produced by the United States Geological Survey
North American Datum of 1983 (NAD83)
World Geodetic System of 1984 (WGS84). Projection and
1 000-meter grid: Universal Transverse Mercator, Zone 17S
10 000-foot ticks: South Carolina Coordinate System of
1983, Georgia Coordinate System of 1983 (east zone)

Imagery:.....NAIP, April 2009
Roads:.....©2006-2010 Tele Atlas
Names:.....GNIS, 2010
Hydrography:.....National Hydrography Dataset, 2009
Contours:.....National Elevation Dataset, 2008
Boundaries:.....Census, IBWC, IBC, USGS, 1972 - 2010



CONTOUR INTERVAL 10 FEET
NORTH AMERICAN VERTICAL DATUM OF 1988
This map was produced to conform with version 0.5.10
of the USGS US Topo Product Standard.
A metadata file associated with this product is draft version 0.5.16



Colliers	Ropers	Trenton
Martinez	North	Granville
Augusta	Augusta	Hollow
West	East	Creek

NORTH AUGUSTA, SC-GA
2011