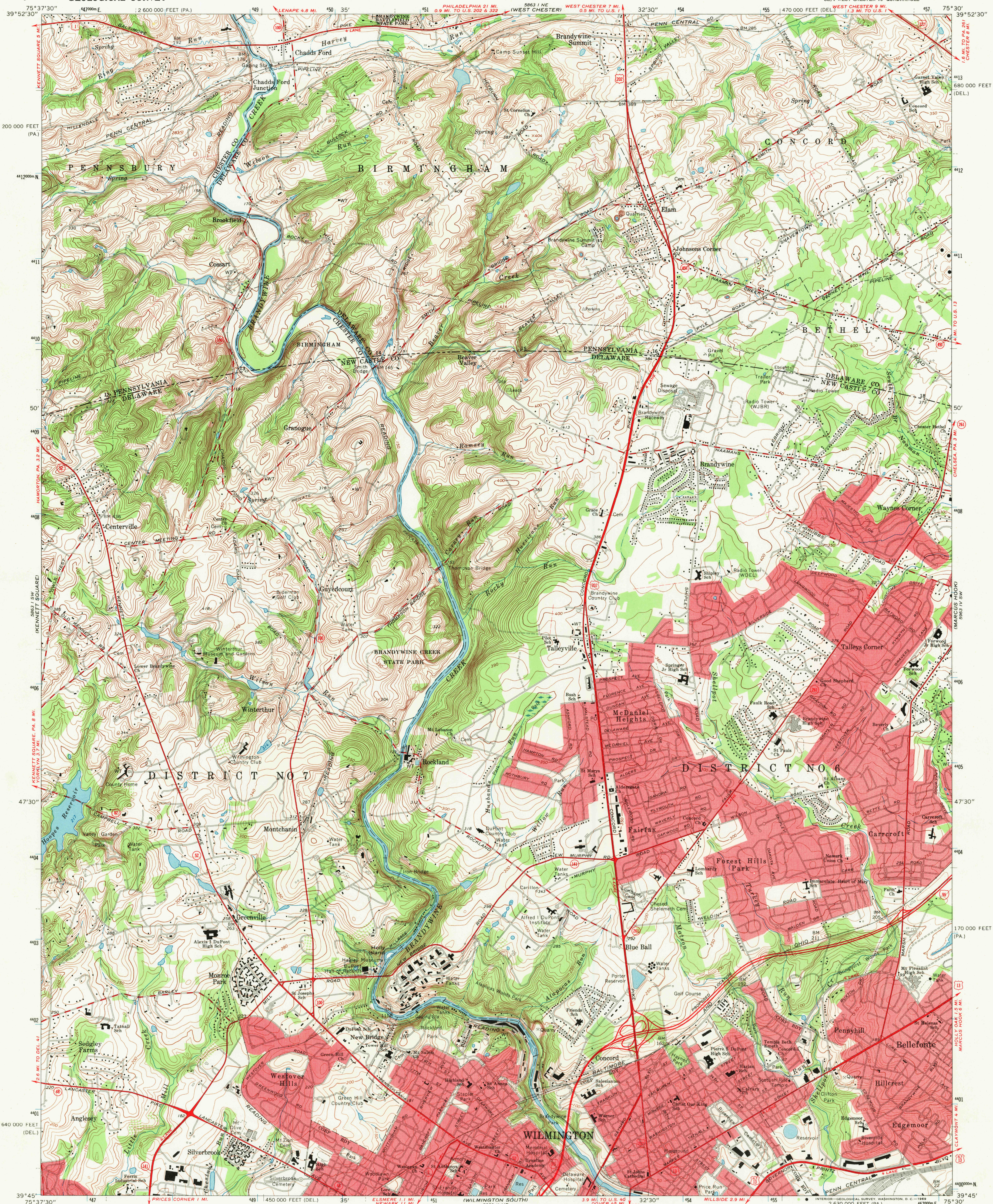
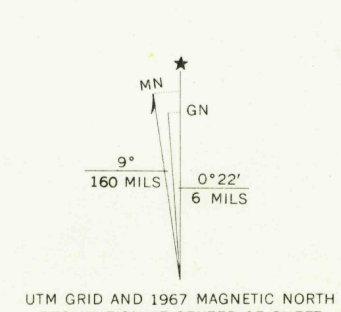


UNITED STATES
DEPARTMENT OF THE INTERIOR
GEOLOGICAL SURVEY

WILMINGTON NORTH QUADRANGLE
DELAWARE-PENNSYLVANIA
7.5 MINUTE SERIES (TOPOGRAPHIC)



Mapped, edited, and published by the Geological Survey
Control by USGS and USC&GS
Topography in Delaware by planetable surveys 1935-1936
Topography in Pennsylvania by photogrammetric methods
from aerial photographs taken 1950. Field checked 1954
Revised from aerial photographs taken 1965. Field checked 1967
Polyconic projection, 1927 North American datum
10,000-foot grids based on Delaware coordinate system,
and Pennsylvania coordinate system, south zone
1000-meter Universal Transverse Mercator grid ticks,
zone 18, shown in blue
Fine red dashed lines indicate selected fence and field lines where
generally visible on aerial photographs. This information is unchecked
Red tint indicates areas in which only landmark buildings are shown



SCALE 1:24,000
CONTOUR INTERVAL 10 FEET
DATUM IS MEAN SEA LEVEL
THIS MAP COMPLIES WITH NATIONAL MAP ACCURACY STANDARDS
FOR SALE BY U.S. GEOLOGICAL SURVEY, WASHINGTON, D.C. 20242
A FOLDER DESCRIBING TOPOGRAPHIC MAPS AND SYMBOLS IS AVAILABLE ON REQUEST

USGS
Historical File
Topographic Division
QUADRANGLE LOCATION

ROAD CLASSIFICATION
Heavy-duty ——— Light-duty ———
Medium-duty ——— Unimproved dirt ———
Interstate Route U.S. Route State Route
WILMINGTON NORTH, DEL.-PA.
SE 1/4 WEST CHESTER 15' QUADRANGLE
N3945-W7530/7.5
1967
AMS 5863 I SE-SERIES V832

U.S.G.S.
FILE COPY
TOPOGRAPHIC DIVISION

FEB 2 1970