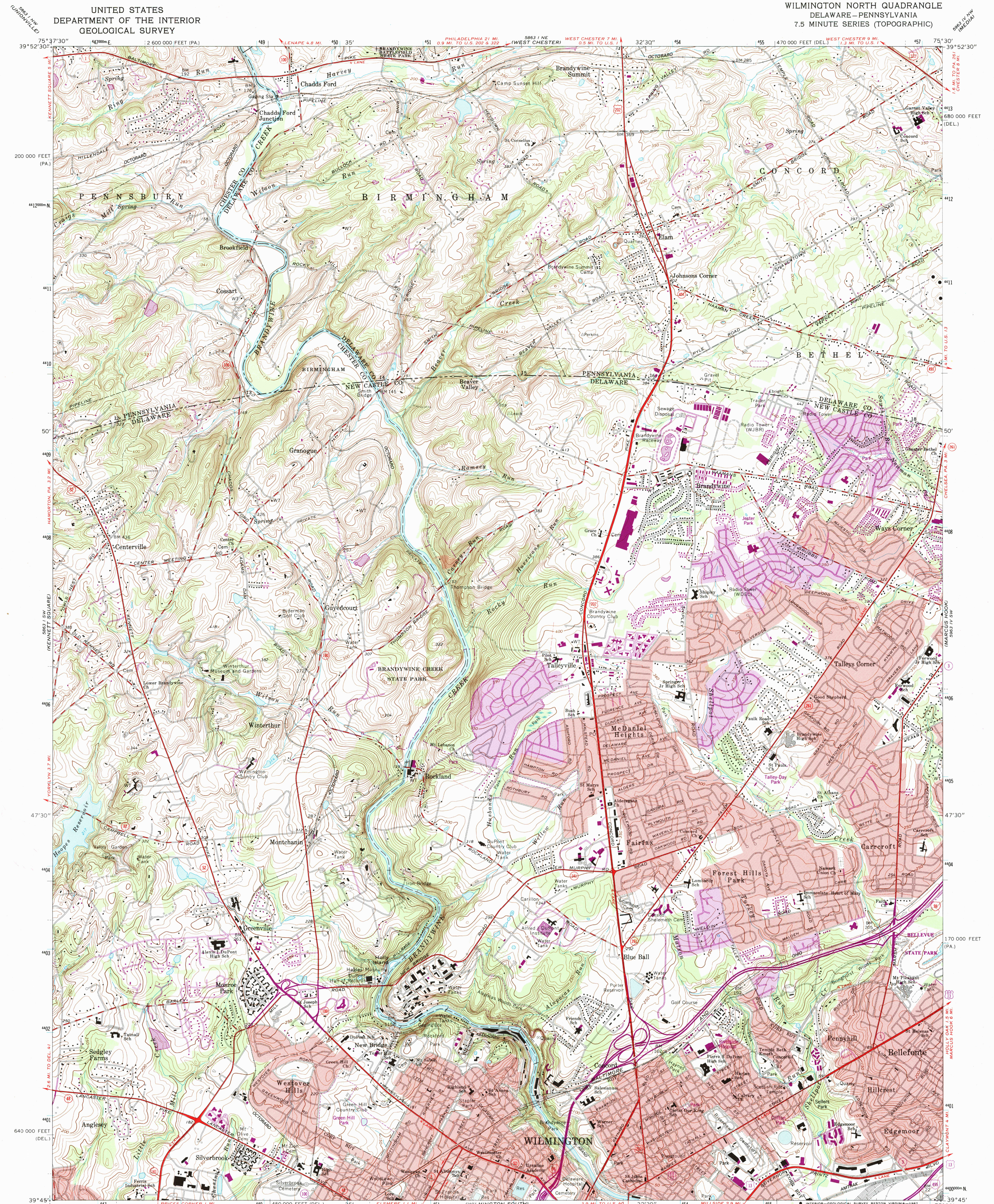
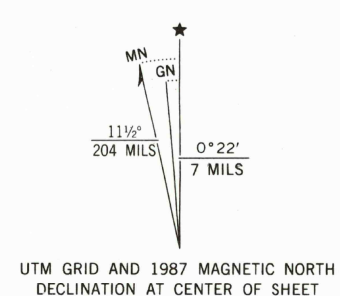


UNITED STATES
DEPARTMENT OF THE INTERIOR
GEOLOGICAL SURVEY

WILMINGTON NORTH QUADRANGLE
DELAWARE-PENNSYLVANIA
7.5 MINUTE SERIES (TOPOGRAPHIC)



Mapped, edited and published by the Geological Survey
Control by USGS and NOS/NOAA
Topography in Delaware by plane-table surveys 1935-1936
Topography in Pennsylvania by photogrammetric methods
from aerial photographs taken 1950. Field checked 1954
Revised from aerial photographs taken 1965. Field checked 1967
Polyconic projection. 10,000-foot grid ticks based on Delaware
coordinate system and Pennsylvania coordinate system, south zone
1000-meter Universal Transverse Mercator grid ticks,
zone 18, shown in blue. 1927 North American Datum
To place on the predicted North American Datum 1983
move the projection lines 5 meters south and
32 meters west as shown by dashed corner ticks
Fine red dashed lines indicate selected fence and field lines where
generally visible on aerial photographs. This information is unchecked
Red tint indicates areas in which only landmark buildings are shown
There may be private inholdings within the boundaries of
the National or State reservations shown on this map



SCALE 1:24,000
CONTOUR INTERVAL 10 FEET
NATIONAL GEODETIC VERTICAL DATUM OF 1929

THIS MAP COMPLIES WITH NATIONAL MAP ACCURACY STANDARDS
FOR SALE BY U.S. GEOLOGICAL SURVEY
DENVER, COLORADO 80225 OR RESTON, VIRGINIA 22092
A FOLDER DESCRIBING TOPOGRAPHIC MAPS AND SYMBOLS IS AVAILABLE ON REQUEST

Revisions shown in purple and woodland compiled from
aerial photographs taken 1982 and other sources. This
information not field checked. Map edited 1987
Purple tint indicates extension of urban areas

ROAD CLASSIFICATION
Heavy-duty ——— Light-duty ———
Medium-duty ——— Unimproved dirt ———
Interstate Route U.S. Route State Route

WILMINGTON NORTH, DEL. - PA.
39075-G5-TF-024

1967
PHOTOREVISED 1987
DMA 5863 1 SE - SERIES V852