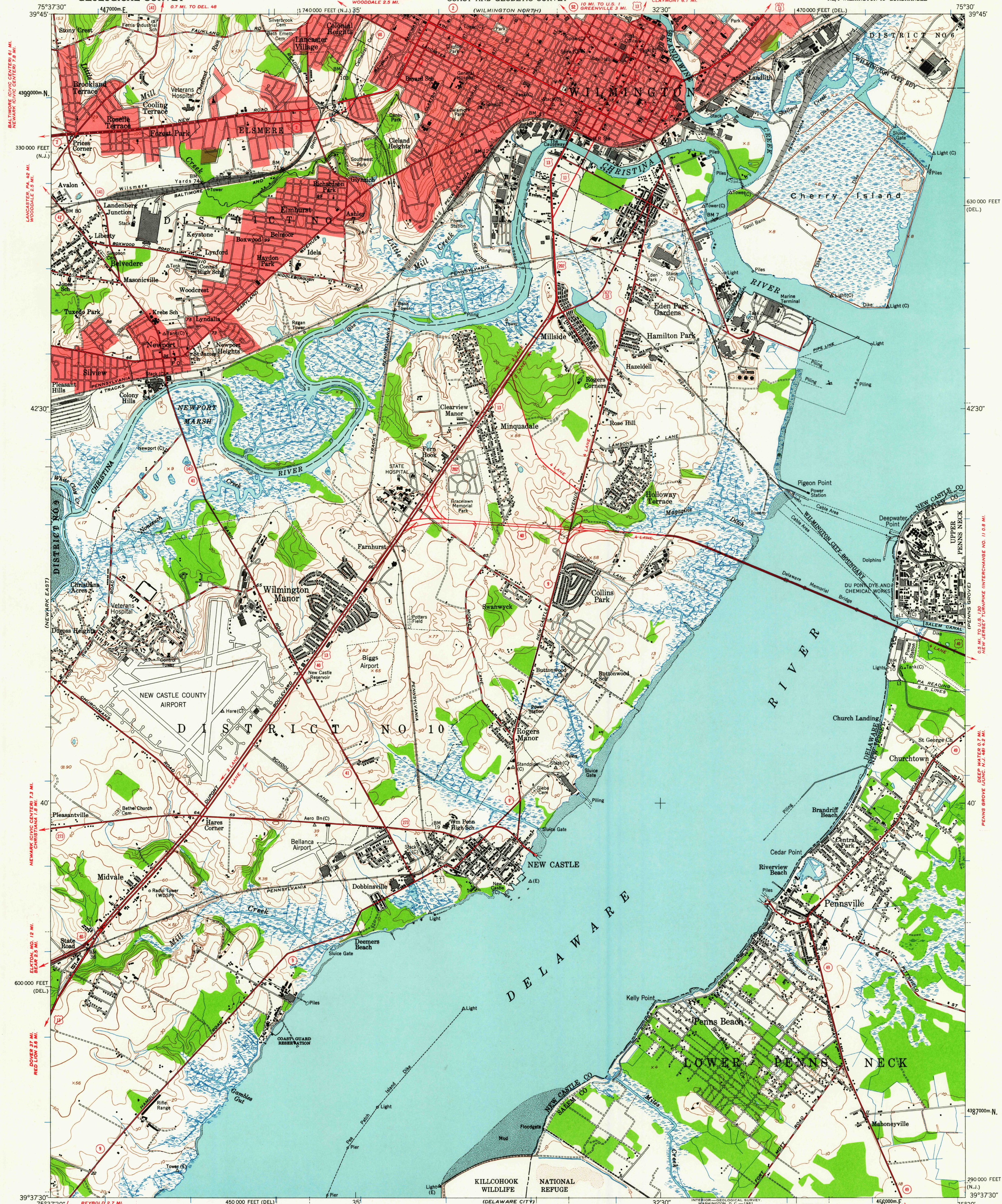


UNITED STATES
DEPARTMENT OF THE INTERIOR
GEOLOGICAL SURVEY

UNITED STATES
DEPARTMENT OF COMMERCE
COAST AND GEODETIC SURVEY

WILMINGTON SOUTH QUADRANGLE
DELAWARE-NEW JERSEY
7.5 MINUTE SERIES (TOPOGRAPHIC)
NE/4 WILMINGTON 15' QUADRANGLE



Map by U. S. Coast & Geodetic Survey
Edited and published by the Geological Survey
Control by USC&GS (C) and USCE (E)
Culture and drainage in part compiled from
aerial photographs taken 1946
Topography by plane-table methods 1946. Field check 1948
Polyconic projection. 1927 North American datum
10,000-foot grids based on Delaware and New Jersey
coordinate systems
No distinction is made between dwellings, barns,
commercial and industrial buildings
Red tint indicates areas in which only
landmark buildings are shown
1000-meter Universal Transverse Mercator grid ticks,
zone 18, shown in blue

APPROXIMATE MEAN
DECLINATION, 1948

SCALE 1:24,000
1 0 1000 2000 3000 4000 5000 6000 7000 FEET
1 5 0 1 KILOMETER

CONTOUR INTERVAL 10 FEET
DATUM IS MEAN SEA LEVEL
SHORELINE SHOWN REPRESENTS THE APPROXIMATE LINE OF MEAN HIGH WATER
THE AVERAGE RANGE OF TIDE IS APPROXIMATELY 5 FEET

THIS MAP COMPLIES WITH NATIONAL MAP ACCURACY STANDARDS
FOR SALE BY U. S. GEOLOGICAL SURVEY, WASHINGTON 25, D. C.
A FOLDER DESCRIBING TOPOGRAPHIC MAPS AND SYMBOLS IS AVAILABLE ON REQUEST

USGS
Historical File
Topographic Division

QUADRANGLE LOCATION

ROAD CLASSIFICATION
Heavy-duty ——— Light-duty ———
Medium-duty ——— Unimproved dirt ———
U. S. Route —○— State Route —○—

WILMINGTON SOUTH, DEL.-N. J.
NE/4 WILMINGTON 15' QUADRANGLE
N9397.5-W7530/7.5

1948

USGS
FILE COPY
TOPOGRAPHIC DIVISION

SEP 1 1961

2641