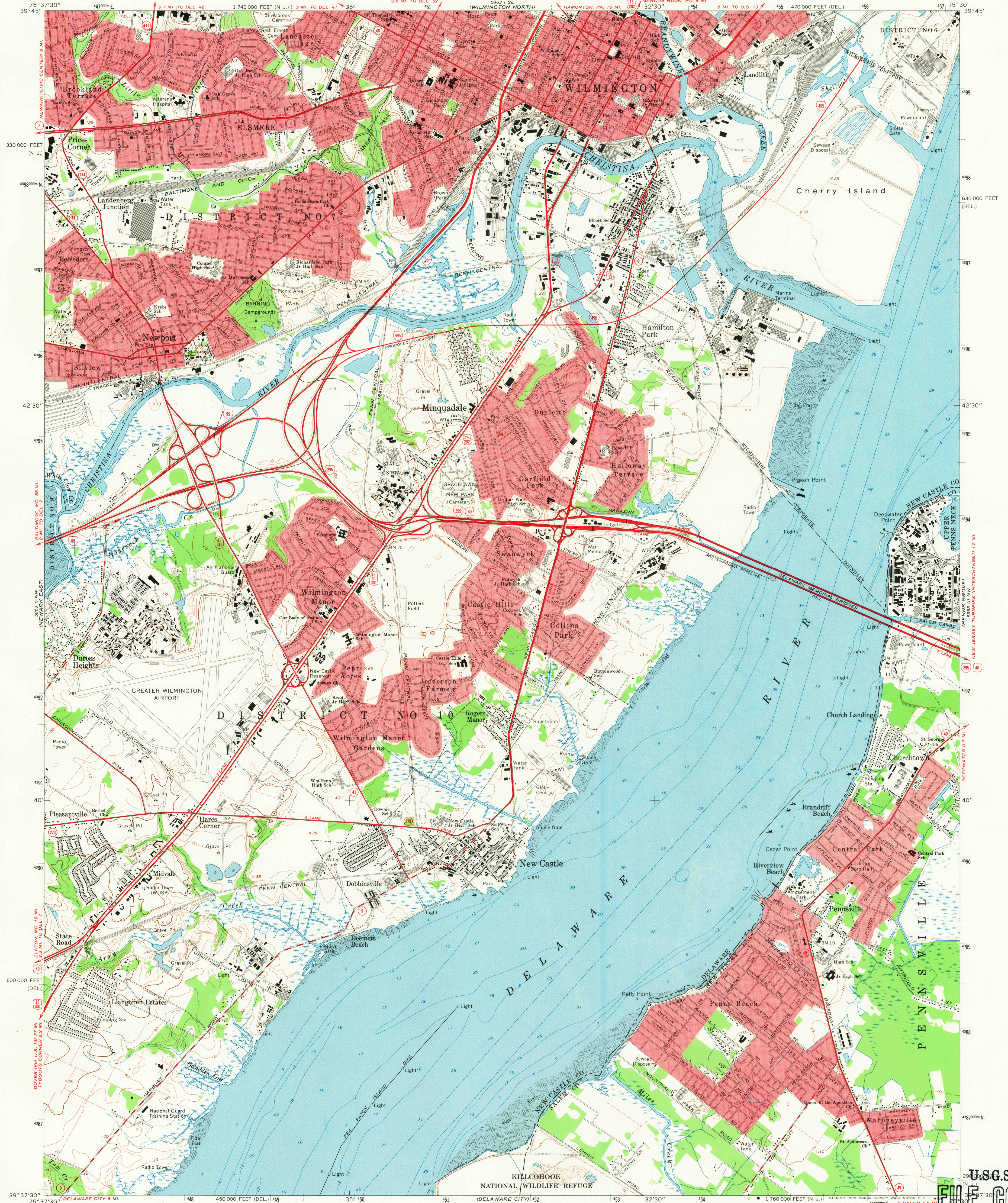
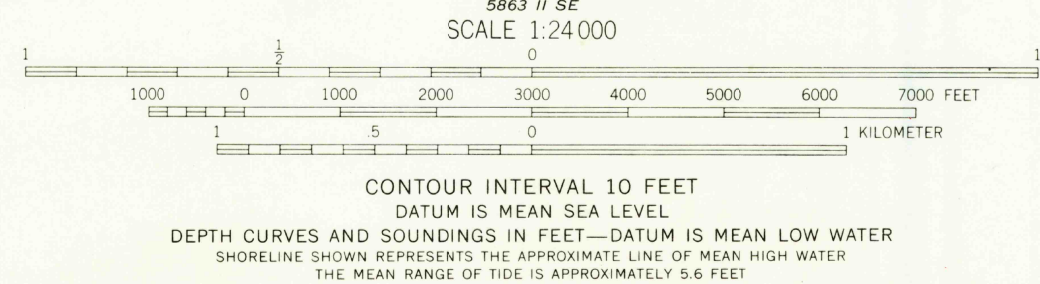


UNITED STATES
DEPARTMENT OF THE INTERIOR
GEOLOGICAL SURVEY

WILMINGTON SOUTH QUADRANGLE
DELAWARE-NEW JERSEY
7.5 MINUTE SERIES (TOPOGRAPHIC)
NE/4 WILMINGTON 15 QUADRANGLE



Maped by U. S. Coast and Geodetic Survey
Edited and published by the Geological Survey
Control by USGS, USC&GS, and USCE
Planimetry by photogrammetric methods from aerial photographs taken 1946
Topography by planimetric surveys 1946. Field checked 1948
Revised by the Geological Survey from aerial photographs
taken 1965. Field checked 1967
Selected hydrographic data compiled from USC&GS Chart 294 (1966)
This information is not intended for navigational purposes
Polyconic projection. 1927 North American datum
10,000-foot grids based on Delaware and New Jersey coordinate systems
1000-meter Universal Transverse Mercator grid ticks,
zone 18, shown in blue
Fine red dashed lines indicate selected fence and field lines where
generally visible on aerial photographs. This information is unchecked
Red tint indicates areas in which only landmark buildings are shown



THIS MAP COMPLIES WITH NATIONAL MAP ACCURACY STANDARDS
FOR SALE BY U. S. GEOLOGICAL SURVEY, WASHINGTON, D. C. 20242
A FOLDER DESCRIBING TOPOGRAPHIC MAPS AND SYMBOLS IS AVAILABLE ON REQUEST

USGS
Historical File
Topographic Division

ROAD CLASSIFICATION
Heavy-duty ——— Light-duty ———
Medium-duty ——— Unimproved dirt ———
Interstate Route U. S. Route State Route

WILMINGTON SOUTH, DEL. - N. J.
NE/4 WILMINGTON 15 QUADRANGLE
N3937.5-W7530.7/5

U.S.G.S.
FILE COPY
TOPOGRAPHIC DIVISION

3250
JUN 19 1970

1967
AMS 5863 II NE-SERIES V832