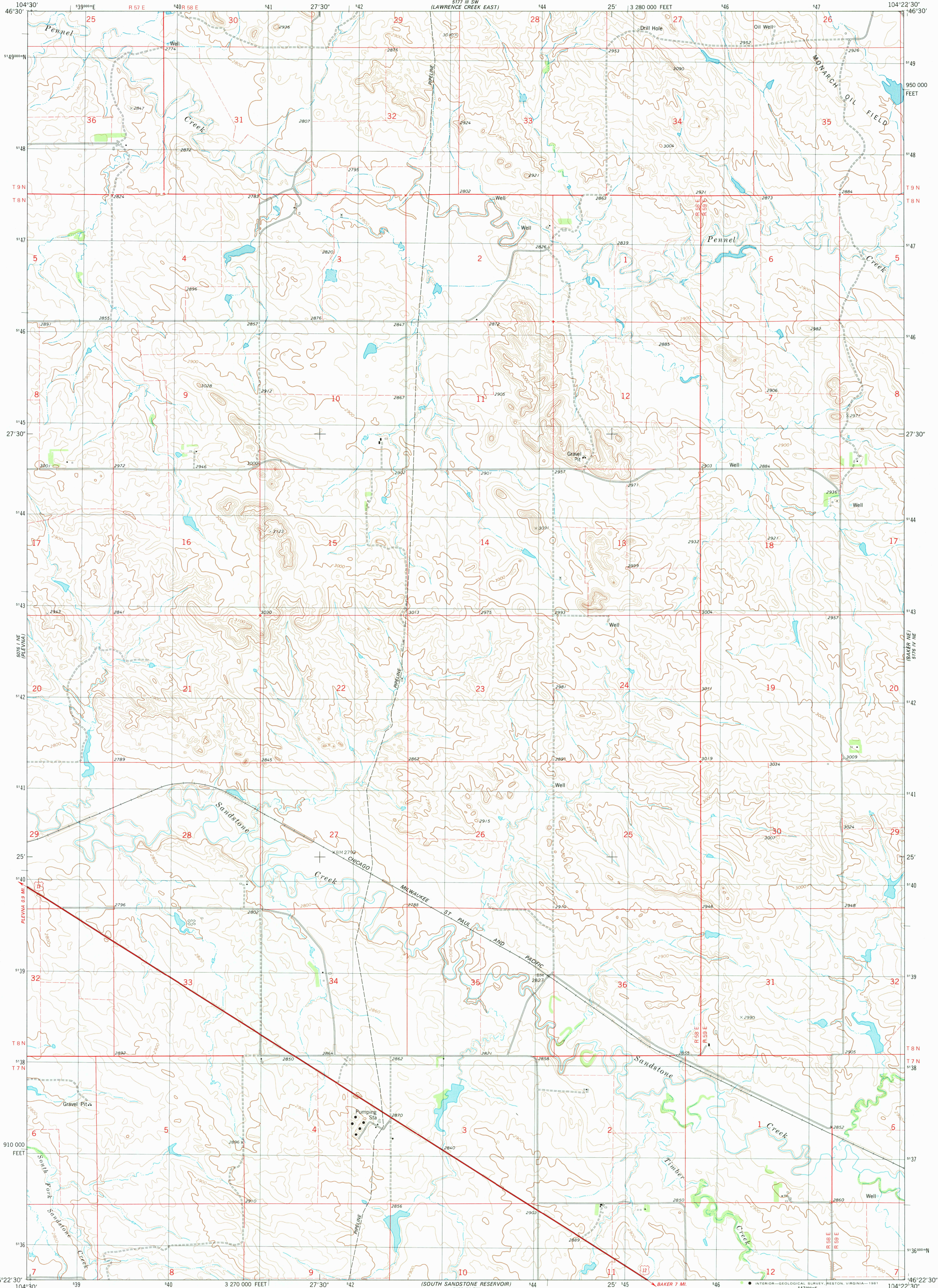
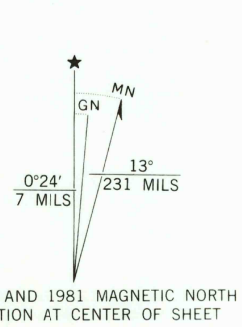


UNITED STATES
DEPARTMENT OF THE INTERIOR
GEOLOGICAL SURVEY

BAKER NW QUADRANGLE
MONTANA—FALLON CO.
7.5 MINUTE SERIES (TOPOGRAPHIC)



Mapped, edited, and published by the Geological Survey
Control by USGS and NOS/NOAA
Topography by photogrammetric methods from aerial photographs
taken 1974. Field checked 1976. Map edited 1981
Projection and 10,000-foot grid ticks: Montana
coordinate system, south zone (Lambert conformal conic)
1000-meter Universal Transverse Mercator grid, zone 13
1927 North American datum
To place on the predicted North American Datum 1983
move the projection lines 4 meters north and
40 meters east as shown by dashed corner ticks
Fine red dashed lines indicate selected fence lines



THIS MAP COMPLIES WITH NATIONAL MAP ACCURACY STANDARDS
FOR SALE BY U. S. GEOLOGICAL SURVEY, DENVER, COLORADO 80225, OR RESTON, VIRGINIA 22092
A FOLDER DESCRIBING TOPOGRAPHIC MAPS AND SYMBOLS IS AVAILABLE ON REQUEST



ROAD CLASSIFICATION
Primary highway, hard surface
Secondary highway, hard surface
Interstate Route
U. S. Route
State Route
Light-duty road, hard or improved surface
Unimproved road
State Route

BAKER NW, MONT.
N4622.5-W10422.5/7.5

1981

DMA 5176 IV NW—SERIES V894

OCT 26 1981

RETURN TO:
USGS NMD HISTORICAL MAP ARCHIVES