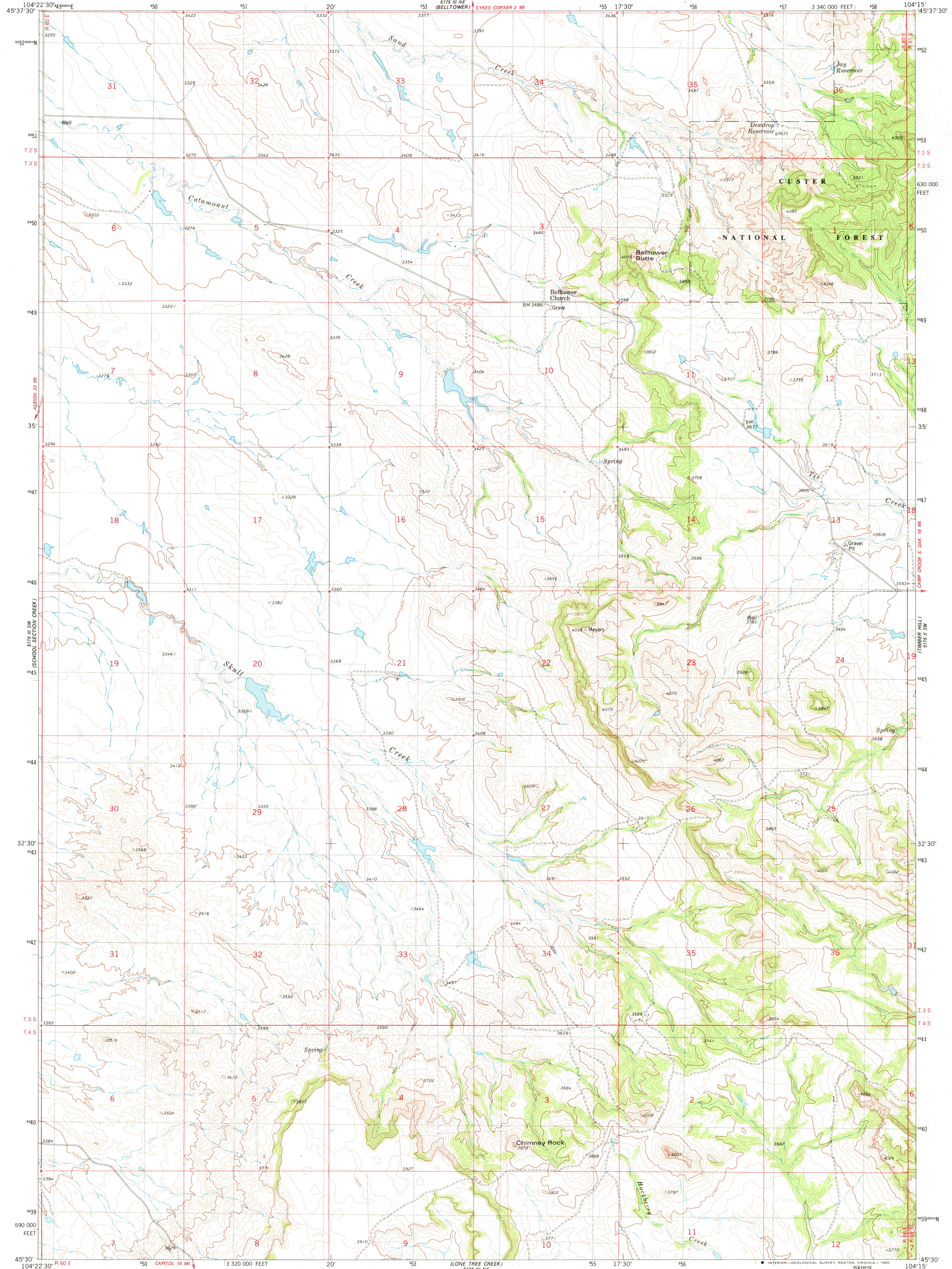


5175 III NW
(FAVOR HILLS)

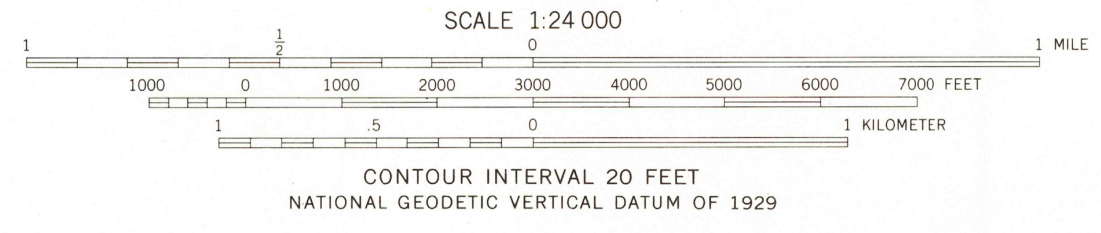
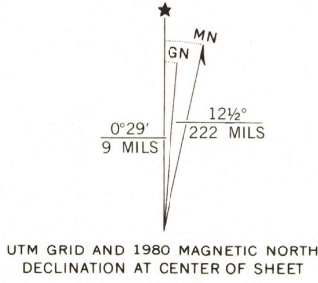
UNITED STATES
DEPARTMENT OF THE INTERIOR
GEOLOGICAL SURVEY

BELLTOWER BUTTE QUADRANGLE
MONTANA—CARTER CO.
7.5 MINUTE SERIES (TOPOGRAPHIC)

5175 III NW
(RUSTER DIVIDE)



Mapped, edited, and published by the Geological Survey
Control by USGS, NOS/NOAA, and U.S. Forest Service
Topography by photogrammetric methods from aerial photographs
taken 1972. Field checked 1974. Map edited 1980
Projection and 10,000-foot grid ticks: Montana
coordinate system, south zone (Lambert conformal conic)
1000-meter Universal Transverse Mercator grid, zone 13
1927 North American datum
To place on the predicted North American Datum 1983
move the projection lines 4 meters north and
40 meters east as shown by dashed corner ticks
Fine red dashed lines indicate selected fence lines
There may be private inholdings within the boundaries of the
National or State reservations shown on this map



ROAD CLASSIFICATION

Primary highway, hard surface	Light-duty road, hard or improved surface
Secondary highway, hard surface	Unimproved road
Interstate Route	U.S. Route
	State Route

BELLTOWER BUTTE, MONT.
N4530—W10415/7.5

USGS
Historical File
Topographic Division

1980

DMA 5175 III SE-SERIES V894

OCT 23 1980

1900