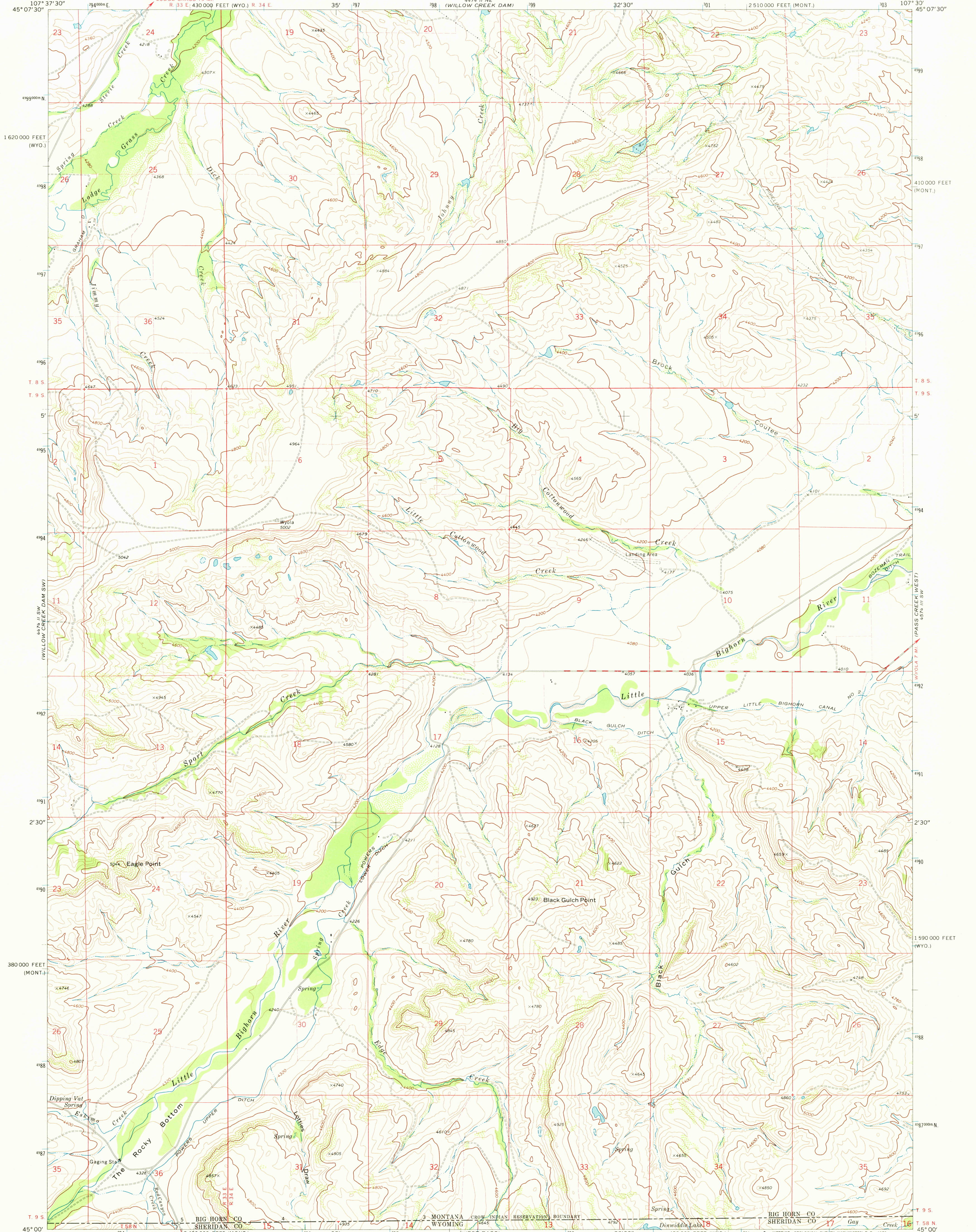
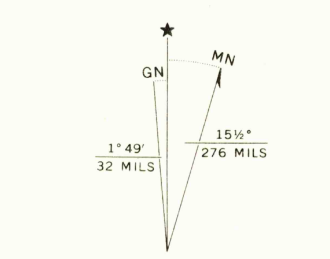


UNITED STATES
DEPARTMENT OF THE INTERIOR
GEOLOGICAL SURVEY

BLACK GULCH QUADRANGLE
MONTANA-WYOMING
7.5 MINUTE SERIES (TOPOGRAPHIC)



Mapped, edited, and published by the Geological Survey as part of the Department of the Interior program for the development of the Missouri River Basin Control by USGS, USC&GS, and U.S. Bureau of Indian Affairs. Topography by photogrammetric methods from aerial photographs taken 1968. Field checked 1969. Polyconic projection. 1927 North American datum. 10,000 foot grids based on Montana coordinate system, south zone, and Wyoming coordinate system, east central zone 1000-meter Universal Transverse Mercator grid ticks, zone 13, shown in blue. Fine red dashed lines indicate selected fence lines.



THIS MAP COMPLIES WITH NATIONAL MAP ACCURACY STANDARDS
FOR SALE BY U.S. GEOLOGICAL SURVEY, DENVER, COLORADO 80225, OR WASHINGTON, D.C. 20242
A FOLDER DESCRIBING TOPOGRAPHIC MAPS AND SYMBOLS IS AVAILABLE ON REQUEST



ROAD CLASSIFICATION
Primary highway, hard surface
Secondary highway, hard surface
Light-duty road, hard or improved surface
Unimproved road
Interstate Route
U.S. Route
State Route

BLACK GULCH, MONT.-WYO.
USGS
HISTORICAL SURVEY
TOPOGRAPHIC DIVISION
AMS 4474 II SE--SERIES V894
1969

3195
MAY 14 1973