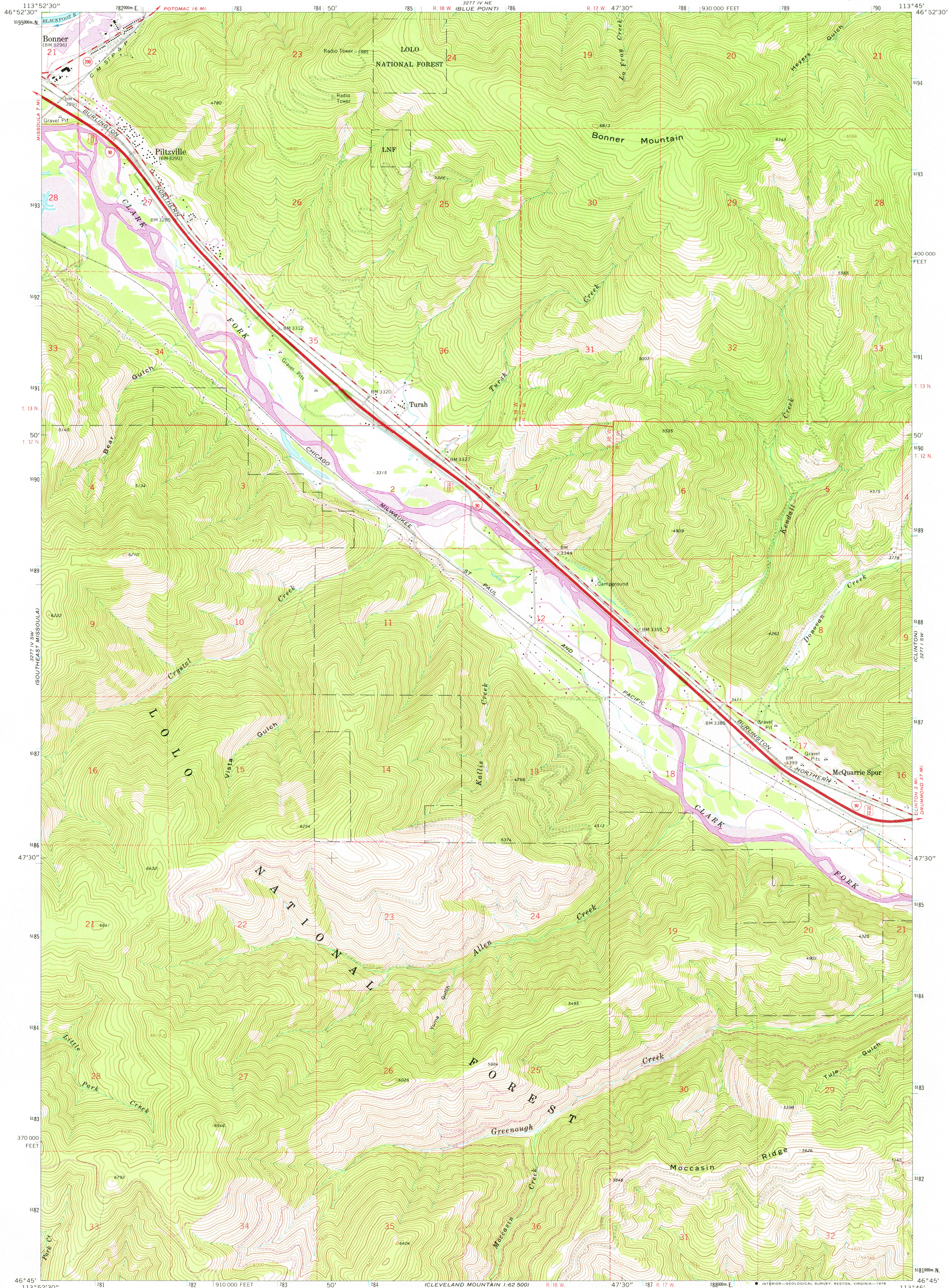


UNITED STATES  
DEPARTMENT OF THE INTERIOR  
GEOLOGICAL SURVEY

BONNER QUADRANGLE  
MONTANA—MISSOULA CO.  
7.5 MINUTE SERIES (TOPOGRAPHIC)



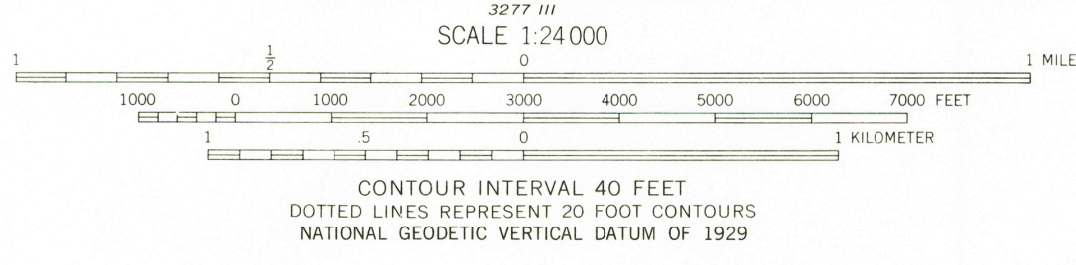
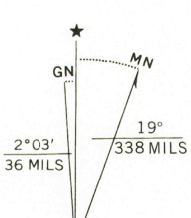
Mapped, edited, and published by the Geological Survey

Control by USGS and NOS/NOAA

Topography by photogrammetric methods from aerial  
photographs taken 1961. Field checked 1965

Polyconic projection, 1927 North American datum  
10,000-foot grid based on Montana coordinate system, central zone  
1000 meter Universal Transverse Mercator grid ticks,  
zone 12, shown in blue

Revisions shown in purple and recompilation of woodland areas  
compiled from aerial photographs taken 1976. Map edited 1978  
This information not field checked



ROAD CLASSIFICATION	
Heavy-duty	Light-duty
Medium-duty	Unimproved dirt
Interstate Route	U.S. Route
	State Route

USGS  
Historical File  
Topographic Division

BONNER, MONT.  
N4645—W11345/7.5

1965  
PHOTOREVISED 1978  
AMS 3277 IV SE—SERIES V894

JAN 05 1979

3600