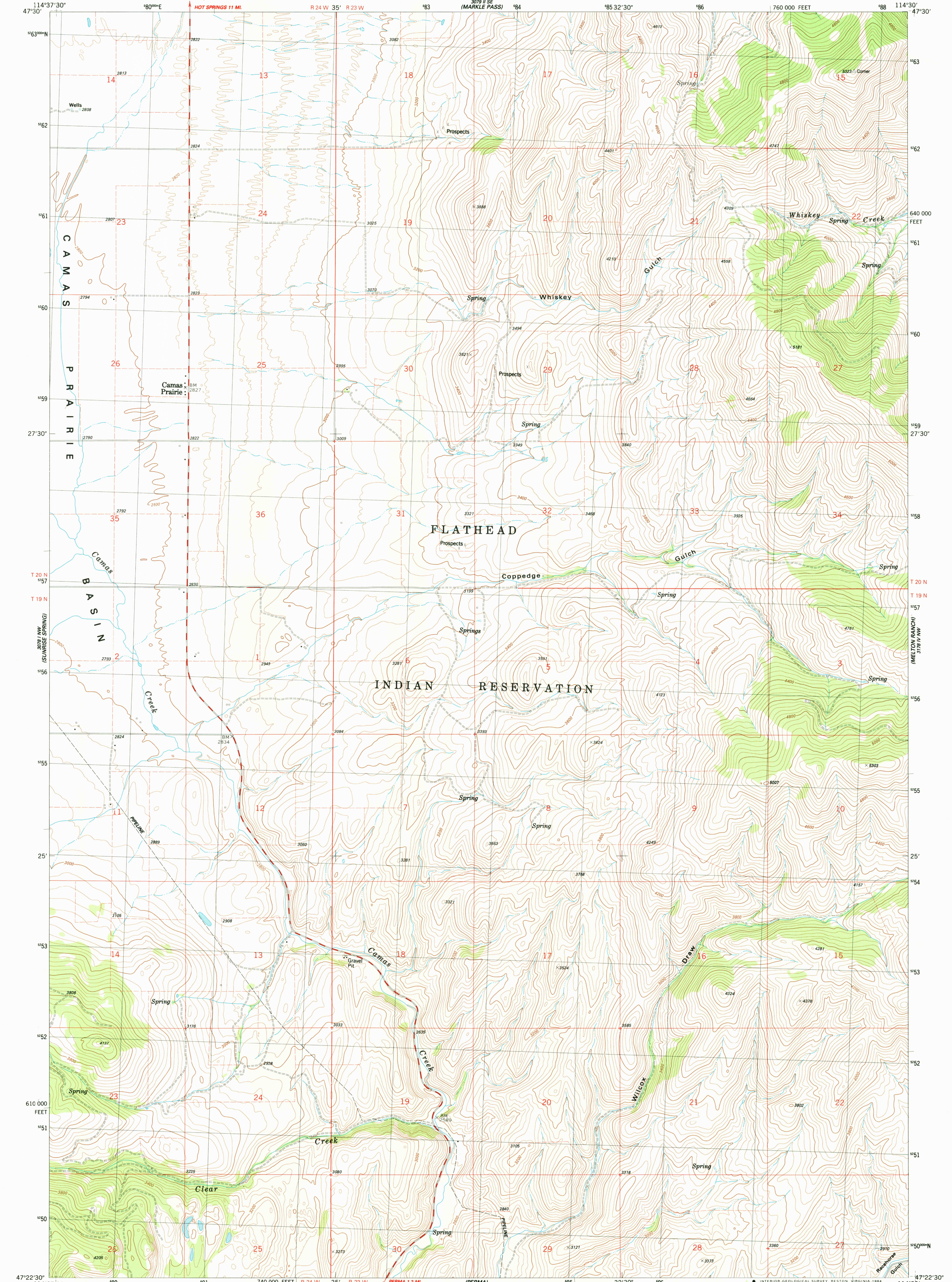


NE 1/4 PERMA 15' QUADRANGLE

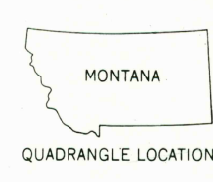
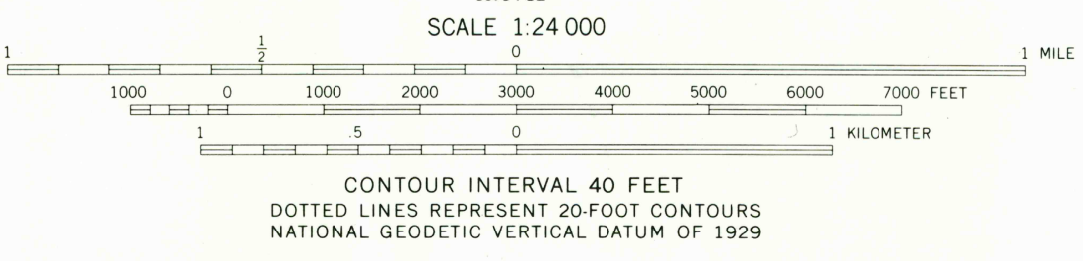
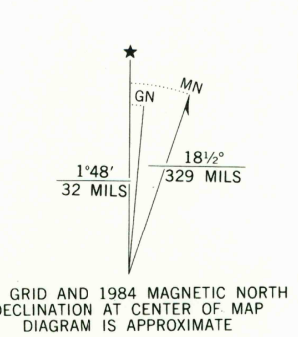
UNITED STATES
DEPARTMENT OF THE INTERIOR
GEOLOGICAL SURVEY

CAMAS PRAIRIE QUADRANGLE
MONTANA-SANDERS CO
7.5 MINUTE SERIES (TOPOGRAPHIC)
NE 1/4 PERMA 15' QUADRANGLE

NE 1/4 PERMA 15' QUADRANGLE



Maped, edited, and published by the Geological Survey
Control by USGS and NOS/NOAA
Topography by photogrammetric methods from aerial photographs
taken 1977. Field checked 1980. Map edited 1984
Projection and 10,000-foot grid ticks: Montana
coordinate system, central zone (Lambert conformal conic)
1000-meter Universal Transverse Mercator grid, zone 11
1927 North American Datum
To place on the predicted North American Datum 1983
move the projection lines 12 meters north and
72 meters east as shown by dashed corner ticks
Fine red dashed lines indicate selected fence lines
There may be private inholdings within the boundaries of
the National or State reservations shown on this map



ROAD CLASSIFICATION	
Primary highway, hard surface	Light duty road, hard or improved surface
Secondary highway, hard surface	Unimproved road
Interstate Route	U. S. Route
	State Route

CAMAS PRAIRIE, MONT.
NE 1/4 PERMA 15' QUADRANGLE
47114-D5-TF-024
1984

DMA 3078 1 NE-SERIES V894

RETURN TO 1
USGS AND HISTORICAL MAP ARCHIVES