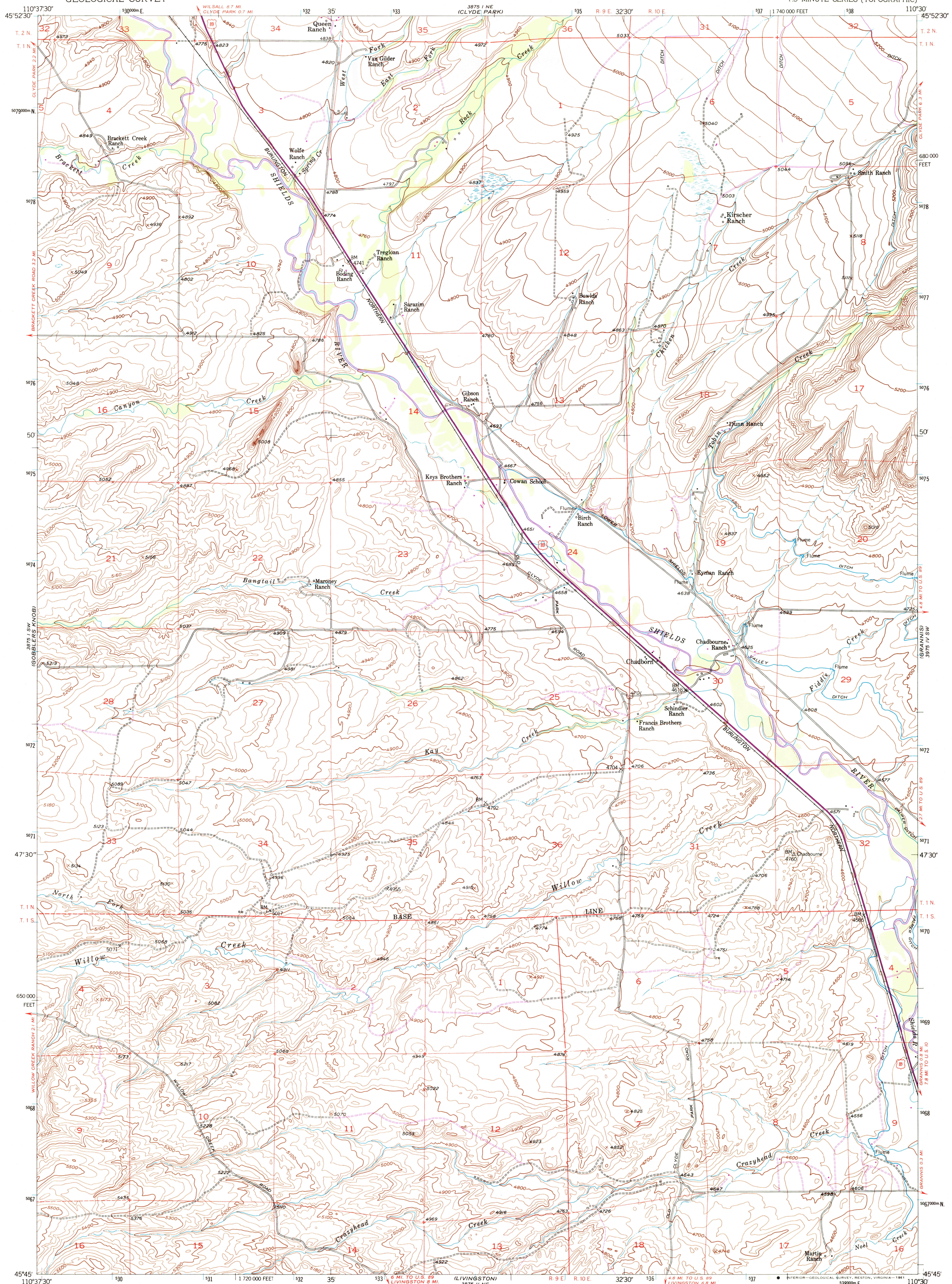


UNITED STATES
DEPARTMENT OF THE INTERIOR
GEOLOGICAL SURVEY

CHADBORN QUADRANGLE
MONTANA-PARK CO.
7.5 MINUTE SERIES (TOPOGRAPHIC)



Maped, edited, and published by the Geological Survey
as part of the Department of the Interior program
for the development of the Missouri River Basin

Control by USGS and NOS/NOAA
Topography from aerial photographs by multiplex methods
Aerial photographs taken 1948. Field check, 1951

Polyconic projection. 1927 North American datum
10,000-foot grid based on Montana coordinate system,
south zone

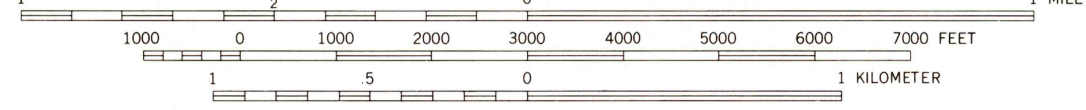
Dashed land lines indicate approximate locations
Unchecked elevations are shown in brown

To place on the predicted North American Datum 1983
move the projection lines 10 meters north and
60 meters east as shown by dashed corner ticks

UTM GRID AND 1980 MAGNETIC NORTH
DECLINATION AT CENTER OF SHEET

To place on the predicted North American Datum 1983
move the projection lines 10 meters north and
60 meters east as shown by dashed corner ticks

SCALE 1:24 000



CONTOUR INTERVAL 20 FEET
NATIONAL GEODETIC VERTICAL DATUM OF 1929

THIS MAP COMPLIES WITH NATIONAL MAP ACCURACY STANDARDS
FOR SALE BY U.S. GEOLOGICAL SURVEY, DENVER, COLORADO 80225, OR RESTON, VIRGINIA 22092
A FOLDER DESCRIBING TOPOGRAPHIC MAPS AND SYMBOLS IS AVAILABLE ON REQUEST

ROAD CLASSIFICATION
Heavy-duty 4 LANE 16 LANE Light-duty
Medium-duty 4 LANE 16 LANE Unimproved dirt
U. S. Route State Route



QUADRANGLE LOCATION

Revisions shown in purple compiled
from aerial photographs taken 1977
and other source data. This information
not field checked. Map edited 1980

CHADBORN, MONT.
N4545-W11030/7.5

1951
PHOTOREVISED 1980
DMA 3875 I SE-SERIES Y894

SEP 14 1988

REC'D FILE COPY