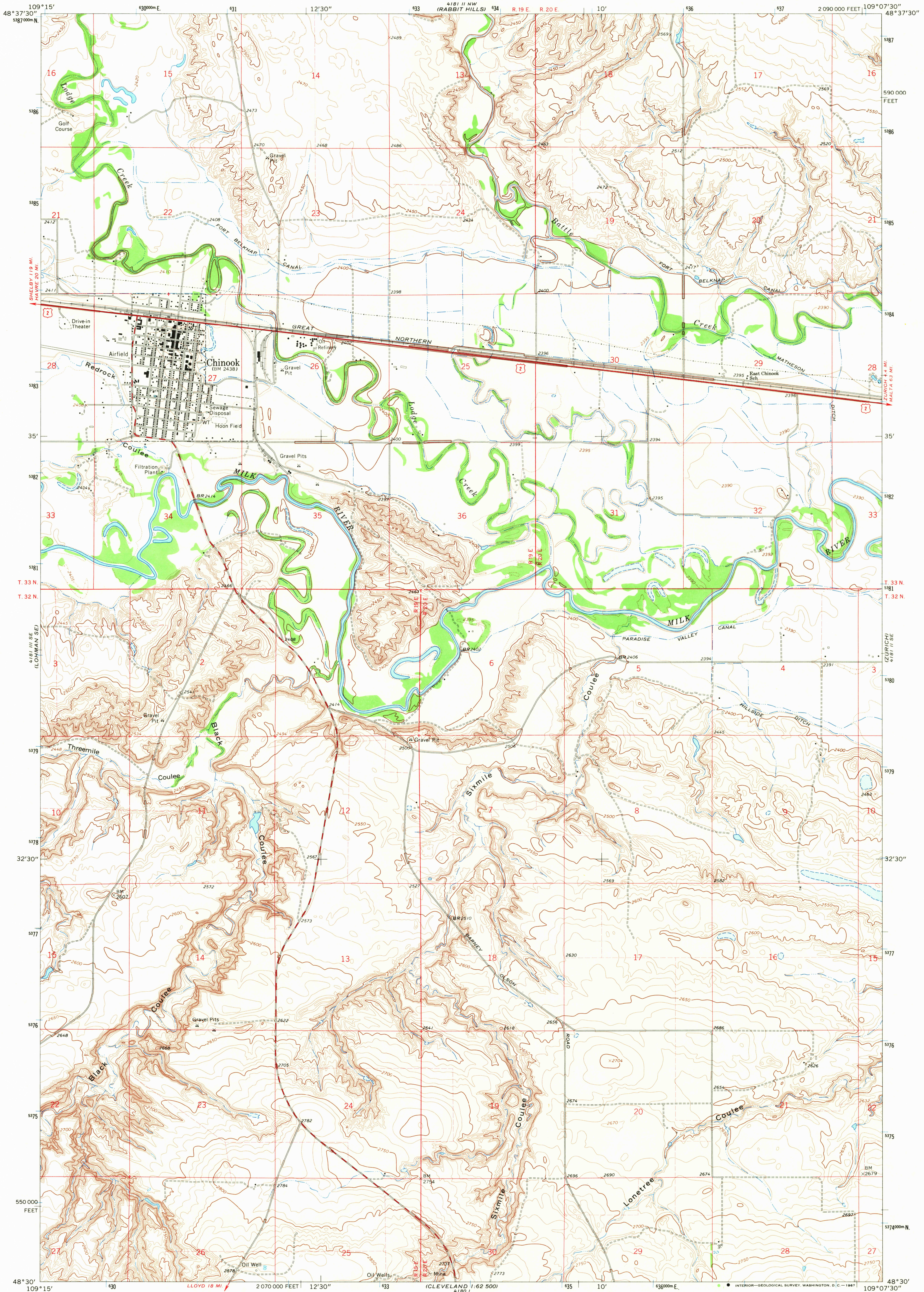
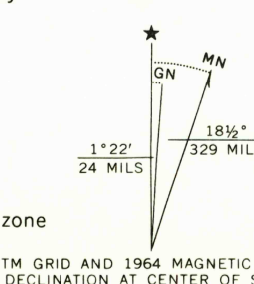


UNITED STATES  
DEPARTMENT OF THE INTERIOR  
GEOLOGICAL SURVEY

CHINOOK QUADRANGLE  
MONTANA—BLAINE CO.  
7.5 MINUTE SERIES (TOPOGRAPHIC)  
SW/4 CHINOOK 15' QUADRANGLE

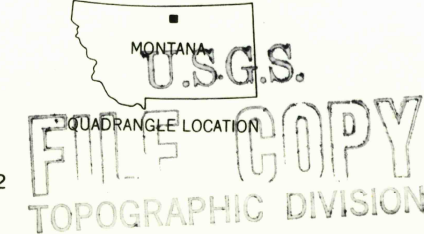


Maped, edited, and published by the Geological Survey as part of the Department of the Interior program for the development of the Missouri River Basin Control by USGS and USC&GS  
Topography by photogrammetric methods from aerial photographs taken 1963. Field checked 1964  
Polyconic projection. 1927 North American datum, 10,000-foot grid based on Montana coordinate system, north zone 1000-meter Universal Transverse Mercator grid ticks, zone 12, shown in blue  
Fine red dashed lines indicate selected fence lines



SCALE 1:24,000  
CONTOUR INTERVAL 10 FEET  
DOTTED LINES REPRESENT 5-FOOT CONTOURS  
DATUM IS MEAN SEA LEVEL  
THIS MAP COMPLIES WITH NATIONAL MAP ACCURACY STANDARDS  
FOR SALE BY U. S. GEOLOGICAL SURVEY, DENVER, COLORADO 80225, OR WASHINGTON, D. C. 20242  
A FOLDER DESCRIBING TOPOGRAPHIC MAPS AND SYMBOLS IS AVAILABLE ON REQUEST

ROAD CLASSIFICATION  
Heavy-duty ——— Light-duty ———  
Medium-duty ——— Unimproved dirt ———  
U. S. Route



CHINOOK, MONT.  
SW/4 CHINOOK 15' QUADRANGLE  
N4830—W10907.5/7.5

1964  
AMS 4181 II SW—SERIES V894

USGS  
Historical File  
Topographic Division

2725  
NOV 17 1967