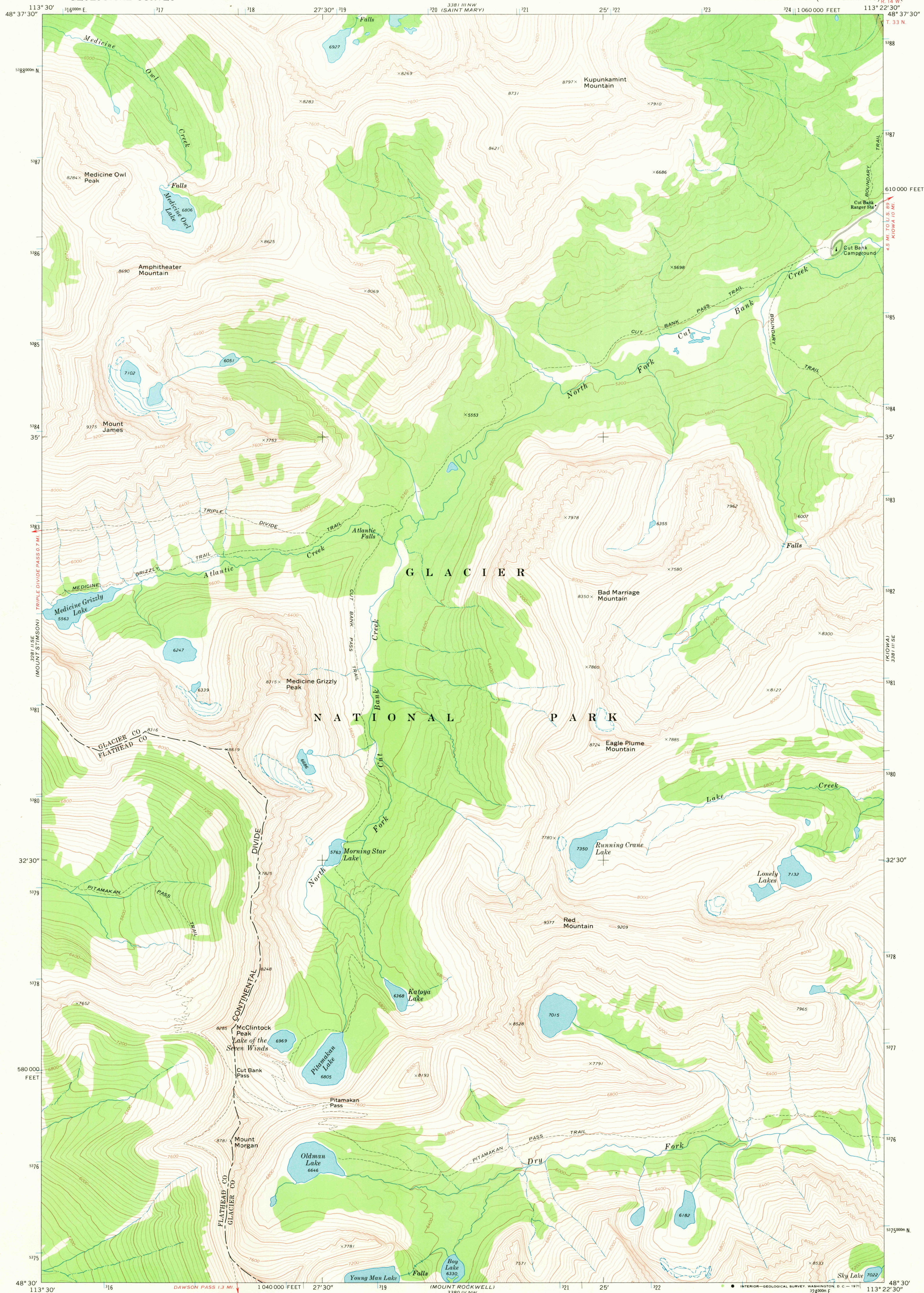
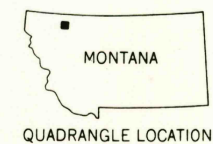
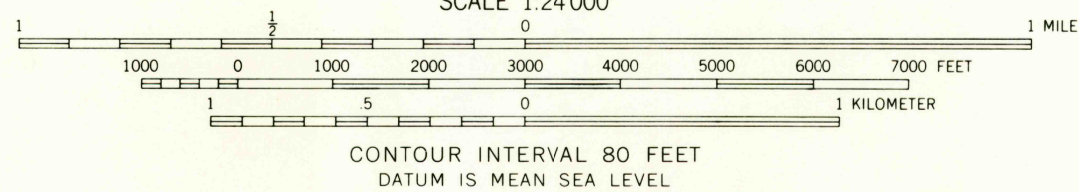
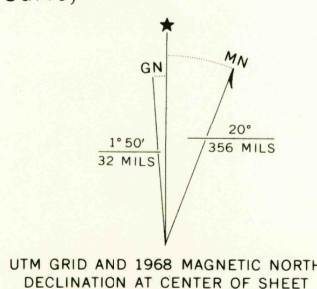


UNITED STATES
DEPARTMENT OF THE INTERIOR
GEOLOGICAL SURVEY

CUT BANK PASS QUADRANGLE
MONTANA
7.5 MINUTE SERIES (TOPOGRAPHIC)



Mapped, edited, and published by the Geological Survey
Control by USGS and USC&GS
Topography by photogrammetric methods from aerial
photographs taken 1966. Field checked 1968
Polyconic projection. 1927 North American datum
10,000-foot grid based on Montana coordinate system,
north zone
1000-meter Universal Transverse Mercator grid ticks,
zone 12, shown in blue
Where omitted, land lines have not been established



ROAD CLASSIFICATION
Light-duty road, all weather,
improved surface

CUT BANK PASS, MONT.
N4830-W11322.5/7.5

1968

AMS 3381 III SW-SERIES V894

USGS
HISTORICAL FILE
TOPOGRAPHIC DIVISION

OCT 1 1971