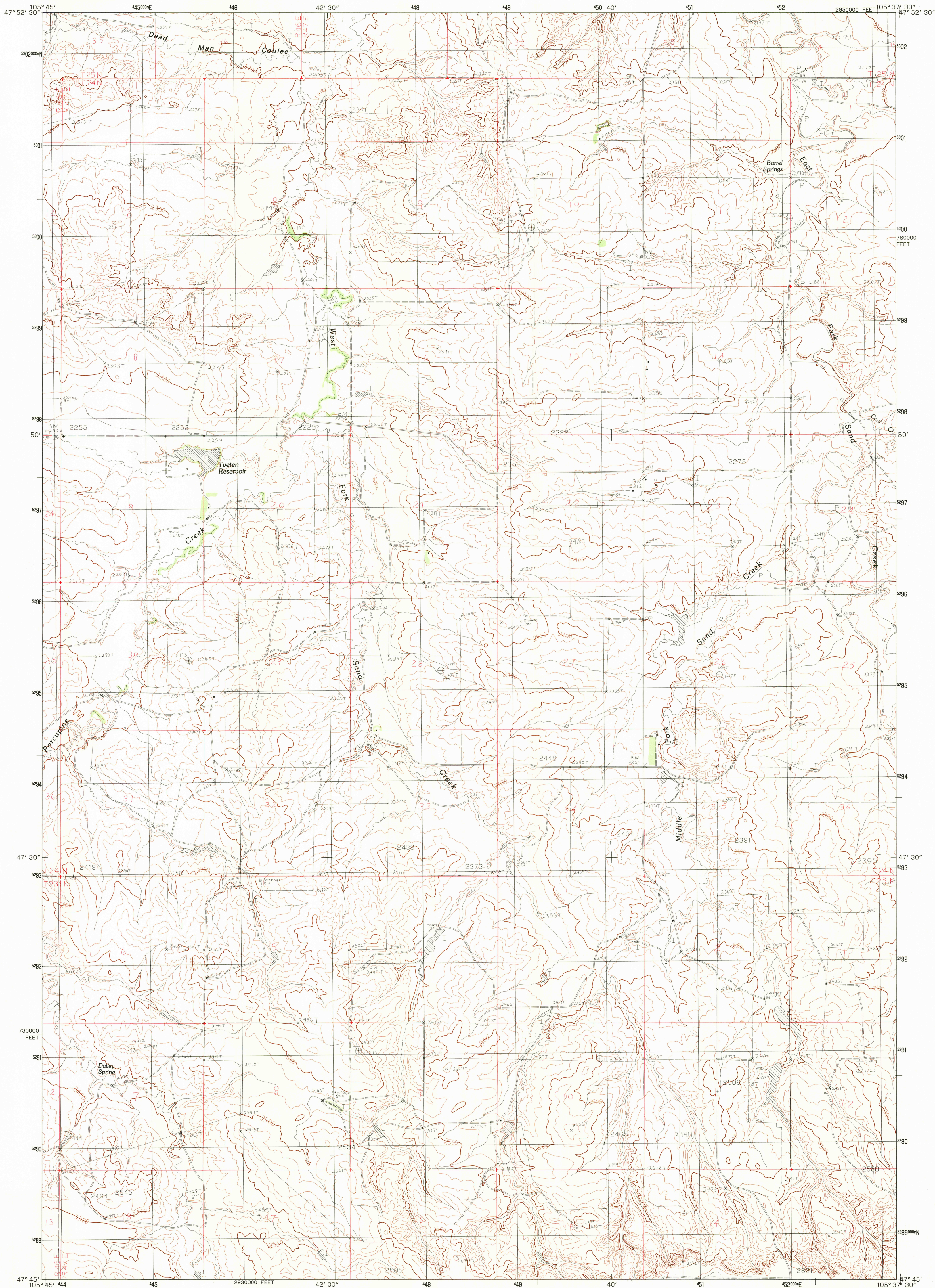
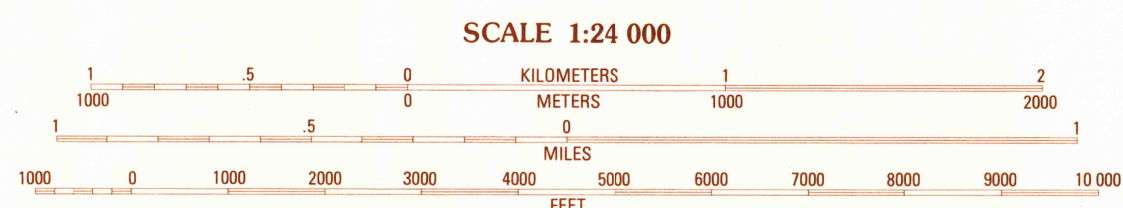


UNITED STATES  
DEPARTMENT OF THE INTERIOR  
GEOLOGICAL SURVEY

DAILEY SPRING QUADRANGLE  
MONTANA—MC CONE CO.  
7.5 MINUTE SERIES (TOPOGRAPHIC)



PRODUCED BY THE UNITED STATES GEOLOGICAL SURVEY  
CONTROL BY USGS, NOS/NOAA  
COMPILED FROM AERIAL PHOTOGRAPHS TAKEN 1976  
FIELD CHECKED 1977 MAP EDITED 1983  
PROJECTION LAMBERT CONFORMAL CONIC  
GRID: 1000-METER UNIVERSAL TRANSVERSE MERCATOR ZONE 13  
10,000-FOOT STATE GRID TICS MONTANA, CENTRAL ZONE  
UTM GRID DECLINATION 14° EAST  
1983 MAGNETIC NORTH DECLINATION NATIONAL GEODETIC VERTICAL DATUM OF 1929  
HORIZONTAL DATUM 1927 NORTH AMERICAN DATUM  
To place on the predicted North American Datum of 1983, move  
the projection lines as shown by dashed corner ticks  
(4 meters north and 43 meters east)  
There may be private inholdings within the boundaries of any  
Federal and State Reservations shown on this map



CONTOUR INTERVAL 20 FEET  
DASHED LINES REPRESENT 10-FOOT CONTOURS

To convert meters to feet multiply by 3.2808  
To convert feet to meters multiply by .3048

THIS MAP COMPLIES WITH NATIONAL MAP ACCURACY STANDARDS  
FOR SALE BY U.S. GEOLOGICAL SURVEY, DENVER, COLORADO 80225  
OR RESTON, VIRGINIA 22092



QUADRANGLE LOCATION

ROAD LEGEND

Improved Road .....  
Unimproved Road .....  
Trail .....

Interstate Route U.S. Route State Route

1	2	3	1 Emily Coulee
			2 Antelope Creek
			3 Reservoir
4		5	4 Rock Creek
			5 Lone Pine School
			6 Pelago Coulee
6	7	8	7 Hudburgh Reservoir
			8 Hudburgh Reservoir

DAILEY SPRING, MONTANA

PROVISIONAL EDITION 1983

47105-G6-TF-024

RETURN TO:  
USGS AND HISTORICAL MAP ARCHIVES