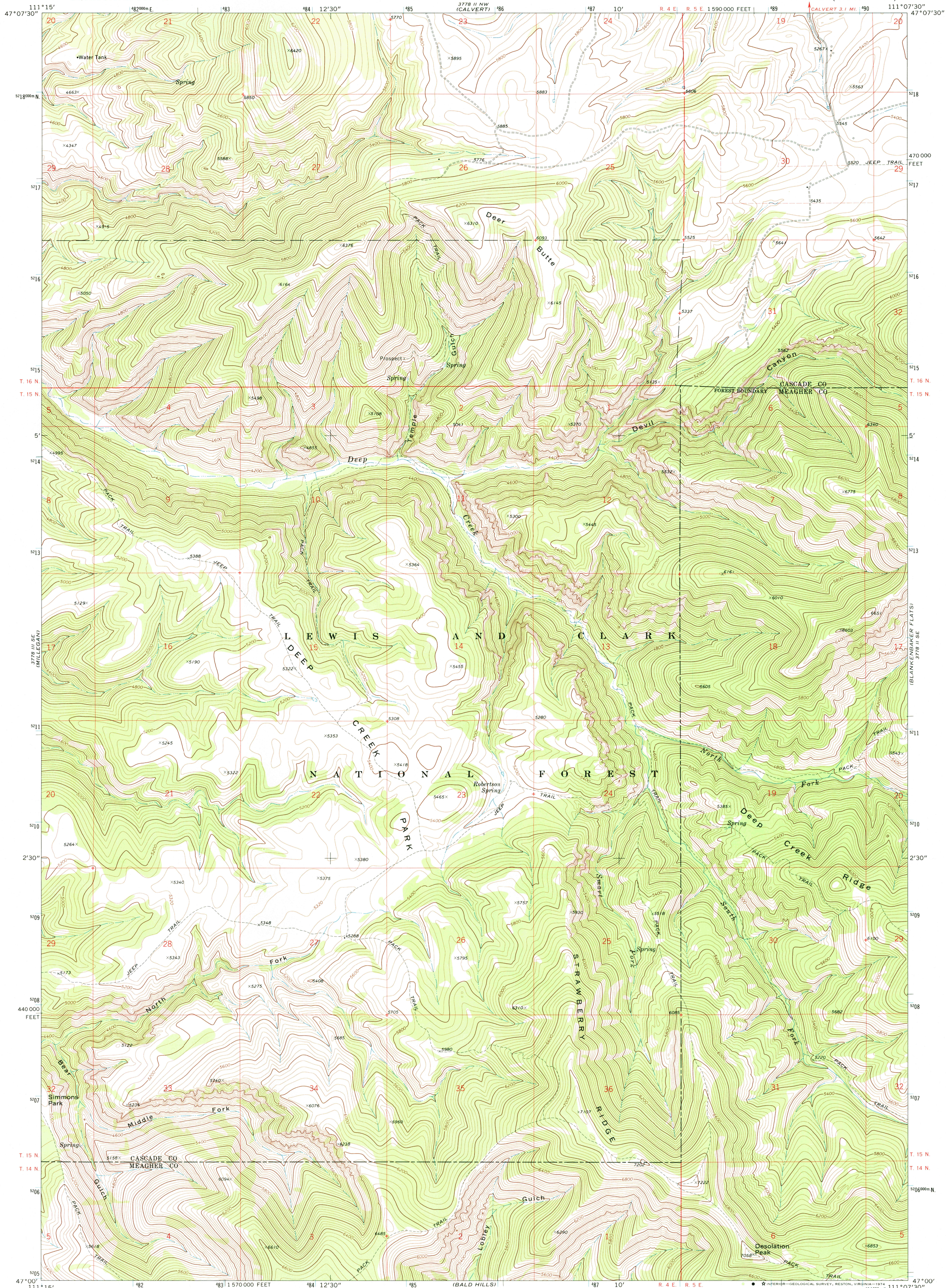


UNITED STATES
DEPARTMENT OF THE INTERIOR
GEOLOGICAL SURVEY

DEEP CREEK PARK QUADRANGLE
MONTANA
7.5 MINUTE SERIES (TOPOGRAPHIC)



Mapped, edited, and published by the Geological Survey

Control by USGS and USC&GS

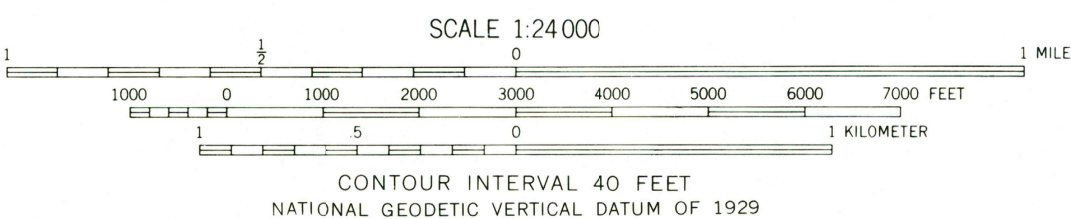
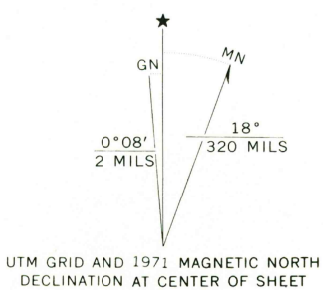
Topography by photogrammetric methods from aerial photographs taken 1970. Field checked 1971.

Projection and 10,000-foot grid ticks: Montana coordinate system, central zone (Lambert conformal conic)

1000-meter Universal Transverse Mercator grid ticks, zone 12, shown in blue. 1927 North American datum

Fine red dashed lines indicate selected fence lines

Where omitted, land lines have not been established



ROAD CLASSIFICATION	
Primary highway, hard surface	Light-duty road, hard or improved surface
Secondary highway, hard surface	Unimproved road
Interstate Route	U. S. Route
	State Route



DEEP CREEK PARK, MONT.
N4700—W11107.5/7.5

USGS
Historical File
Topographic Division

1971

AMS 3778 II SW—SERIES V894

JAN 6 1975

3900